

# CERTIFIED CORNER RECORDATION

Corner Northwest Section 13 T. 14N. R. 19E. P.M.M. Fergus County

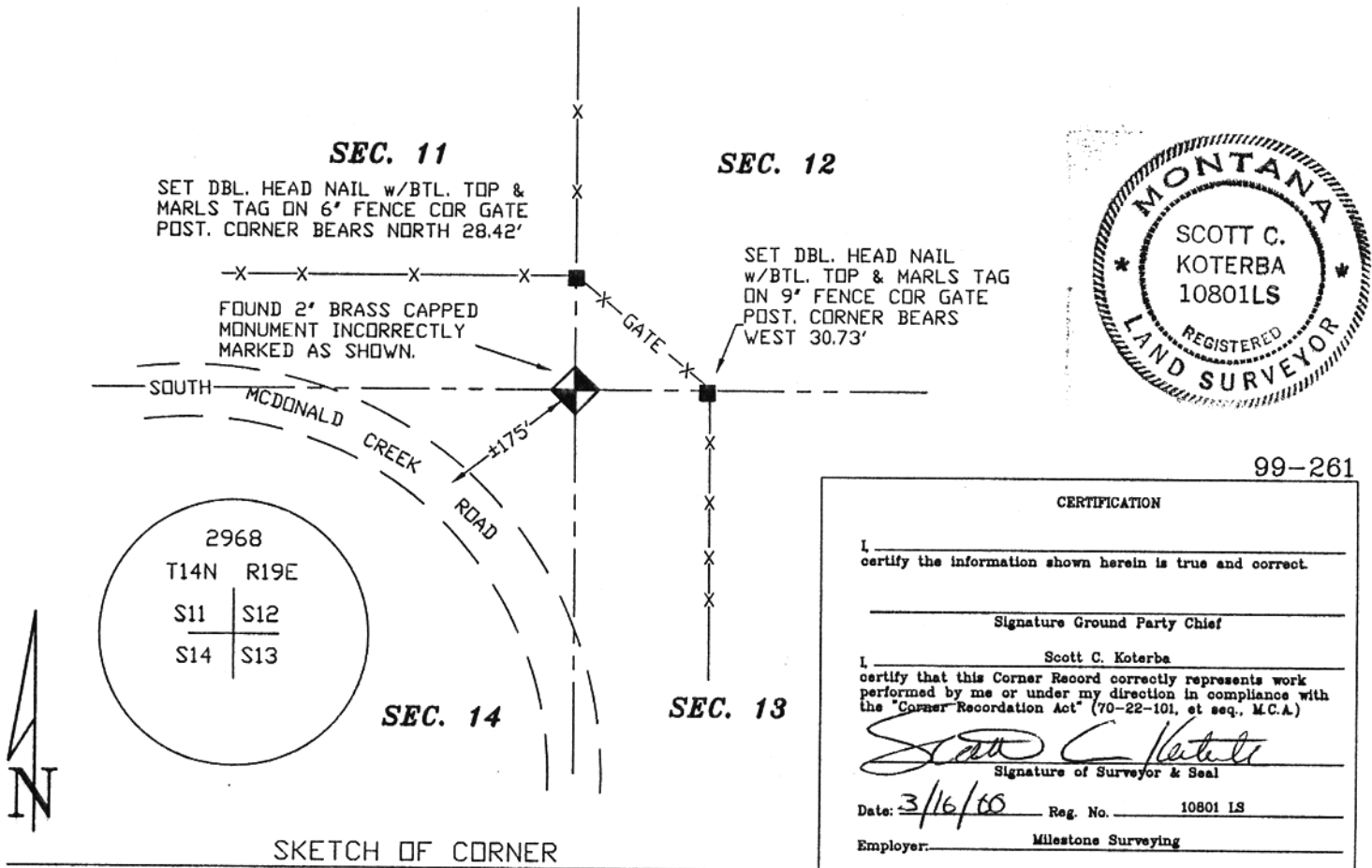
**ORIGINAL RECORD:** (Robinson, 1882) Set a sandstone 12 x 10 x 6 in. 8 in. in the ground for Cor. to Sections 11, 12, 13, & 14, marked with 4 notches South and 1 notch on the East. dug pits 18 X 18 X 12 in. deep in each section 5 1/2 ft dist. and raised a mound of earth 2 ft high 4 1/2 ft base alongside.

**SUBSEQUENT RECORD:** None.

**EVIDENCE FOUND:** (May, 1999) Found 2" Brass Capped Monument flush with the ground, incorrectly marked as shown below.

**PERPETUATION:** (May, 1999) Held found monument, referenced section corner as shown below.

**SEE ASSOCIATED FILED PLAT**



SKETCH OF CORNER

Office of Clerk and Recorder, County of FERGUS. This "corner record" was filed for record on MAR 17 2000 was noted on the cross-index plat and is assigned page No. 135, in book No. 5

*Kathy A. Johnson*  
County Official

Cross Index No. J21 T. 14N. R. 19E. P.M.M.



99-261

CERTIFICATION

I, \_\_\_\_\_ certify the information shown herein is true and correct.

Signature Ground Party Chief

Scott C. Koterba

I, \_\_\_\_\_ certify that this Corner Record correctly represents work performed by me or under my direction in compliance with the "Corner Recordation Act" (70-22-101, et seq., M.C.A.)

*Scott C. Koterba*  
Signature of Surveyor & Seal

Date: 3/16/00 Reg. No. 10801 LS  
Employer: Milestone Surveying

Sec. 13
