

Missoula County Control Point Datasheet

Monument Description: 2-1/2" Brass Cap 3325S

Project Name: ALL

Station Description: Section Corner

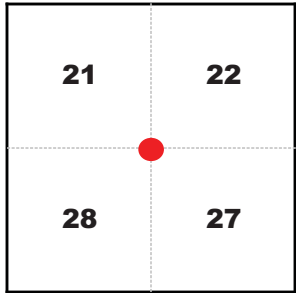
Date Visited: July 12, 2010

Monument Stability: C GPS Visibility: A

Observer: SEN

Quad. Name: Northwest Missoula

T. 14 N. R. 20 W.



NAD 83 (2007) Lat/Long Position

46°57'01.545"N

114°07'27.125"W

NAVD 88 Elevation: 3300.0 sft.

Notes:

Photo of Monument



Photo Looking North



Photo Looking South



To Reach: 2wd access.



Map of Area

CERTIFIED LAND CORNER RECORDATION

DESCRIPTION OF CORNER EVIDENCE FOUND, AND ORIGINAL RECORD (IF KNOWN)

At the Section corner of Sections 21, 22, 28 and 27, Township 14 North, Range 20 West, P.M.M., Missoula County, Montana

ME FIND: No evidence

DESCRIPTION OF MONUMENT AND ACCESSORIES ESTABLISHED TO PERTURBATE THE ORIGINAL LOCATION OF THIS CORNER.

Date of work: 12/1/77

Set a 2"x30" iron pipe w/2-1/2" brass cap. 3 foot diameter mound of stone around monument

Accessories:

- A wood post 7"x8" w/ MARLS tag bears S.87°30'W., 35.25 ft. dist.
- A wood post 7"x8" w/MARLS tag bears S.7°00'W., 81.02 ft. dist.

Variance used, 19°30'

SKETCH, WITH COURSE AND DISTANCE TO ADJACENT CORNERS IF DETERMINED IN THIS SURVEY. (MAY SKETCH OR PASTE REPRODUCTION ON REVERSE SIDE.)

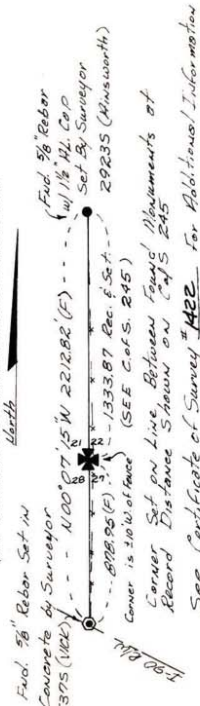


DIAGRAM OF CORNER:

N. **T14N R20W**

521 | 522
528 | 527
1977
REC 33255

Robert R. Gustine
Surveyor's Seal
MONTANA
ROBERT S. CUSTER
33255
LAND SURVEYOR

I, Robert R. Gustine, certify that the information shown herein is true and correct.

Signature of Ground Party Chief

I, Robert S. Custer, certify that I have carefully performed or reviewed the work done on this monument corner as reported on this recordation form and approve the same.

Signature of Surveyor

33255 Registration Number **422810**

Office of Clerk and Recorder, County of Missoula

This "corner record" was filed for record on the 10 day of May, 1978, was not d on the cross-index plat and is assigned page No. 8:15 AM In book No. 50 of 21 County Official

ROBERTA FRANK, County Clerk Cross Index No. R-13 T-14 N. R. 20 W. P.M.M.

By: Robert S. Custer DEPUTY

FORM 120-4149