

Missoula County Control Point Datasheet

Monument Description: 3-1/4" Aluminum Cap 10998S

Project Name: ALL

Station Description: 1/4 Corner

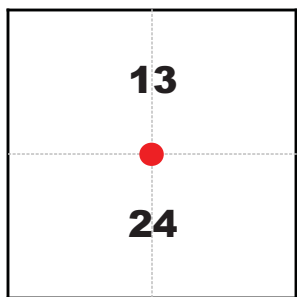
Date Visited: July 15, 2010

Monument Stability: C GPS Visibility: A

Observer: SEN

Quad. Name: Northwest Missoula

T. 14 N. R. 20 W.



NAD 83 (2007) Lat/Long Position

46°57'53.340"N

114°04'16.409"W

NAVD 88 Elevation: 3944.4 sft.

Notes:

Photo of Monument



Photo Looking North



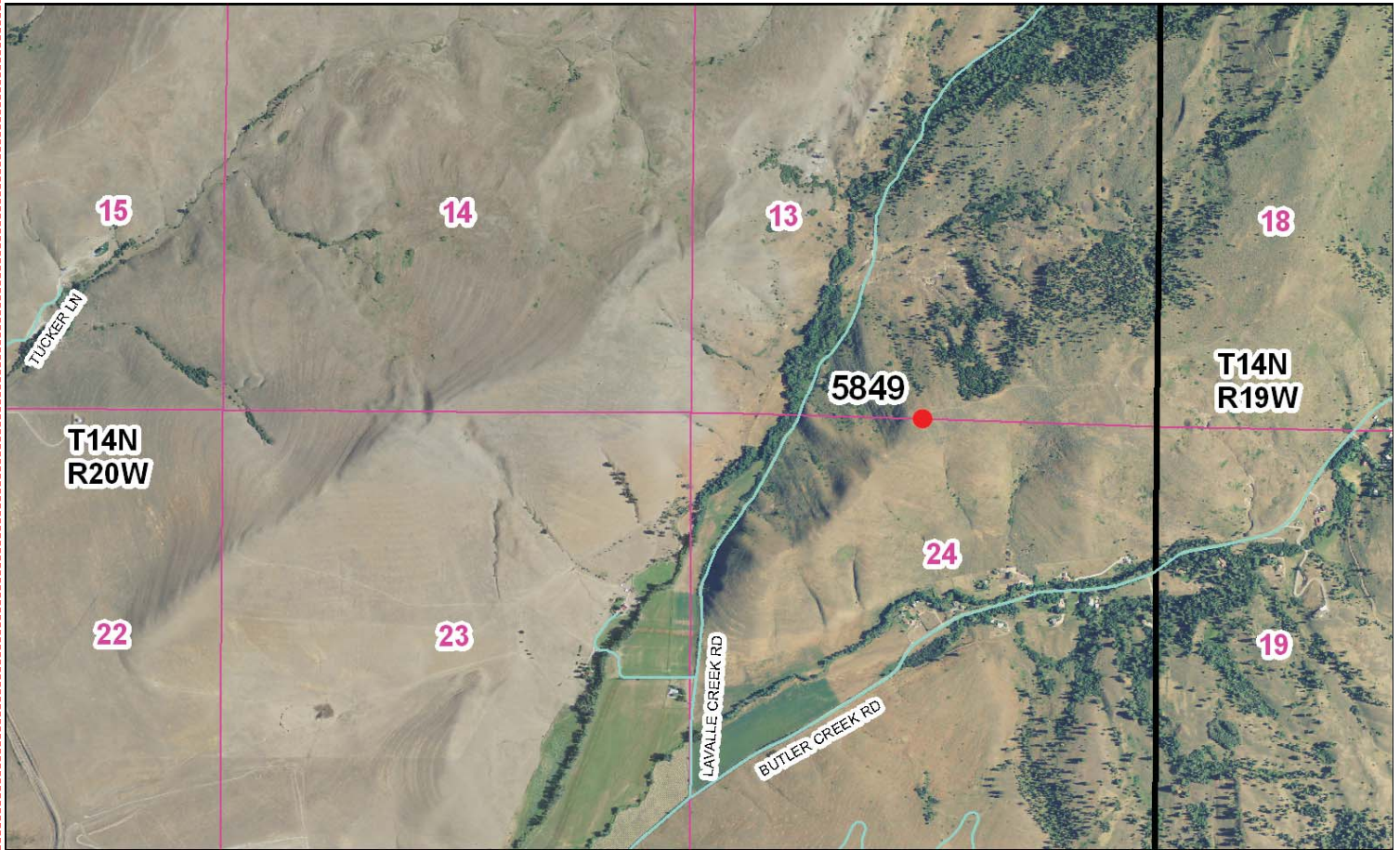
Photo Looking South



Photo Looking West



To Reach: Can access via a primitive road with Mr. Dougherty's permission, or walk 1/4 mile from LaValle Creek Road.



Map of Area

- INSTRUCTIONS**
1. Original and/or subsequent record used to establish the corner position.
 2. Description of monument and accessories set to perpetuate the corner position.
 3. Sketch to accompany all pertinent data which can best be shown in a sketch (example: corner marking, accessories, etc.)
 4. Fill in Cross Index & Section Diagram at bottom of sheet.
 5. Fill in Cross Index & Section Diagram at bottom of sheet.
 6. Fill in Cross Index & Section Diagram at bottom of sheet.

CERTIFIED CORNER RECORDATION

1/4 Corner common to Sections 13 and 24
T. 14 N. R. 20 W. P.M., M. Missoula County, Montana

RECORD #1: (September 20, 1870) G. L. O. survey by Wm. H. Baker
"Set 1/4 sec. cor., a red sandstone 36 x 6 x 4 ins. with pits, marked stone etc as per instructions."

RECORD #2: (December 2, 1982) Corner Recordation Form #8216315, by Missoula County
"A sandstone 2 ins. x 7 ins. in place with 1/4 marked on the north face. Top is out of ground 10 ins. and inclined to the southeast."

Left stone in place and raised a mound of stone 3 ft. base, 6 ins. high around the cornerstone.
Painted the stone orange."

FOUND: (July 15, 2010) A 33 x 5 x 3 ins. stone, marked 1/4 on the north face. The stone was significantly tilted, but the base was still in place.

SET: A 3-1/4" aluminum cap on a 1" x 30" drivable shaft, marked as shown, in the position of the base of the found stone. From which:

- A found 3/8" rebar, bears S 33° E, 1.62 feet.
- I placed the original stone on the north side of the monument.
- No suitable objects were available for reference.

This corner is located on the top of a hill, which is northeast of the intersection of LaValle Creek Road and Butler Creek Road.

NAD 83 (2007) Lat. Lon. NAD 83 (2007) SPC Intl. Ft.
46°57'53.3404"N 102°30'03.01 N
114°04'16.4086"W 828449.17 E
NAVD88 elevation 3944.4 sft Missoula Co. GPS #5849

CERTIFICATION
I, Steve Niday, certify the information on this record is true and correct.

N/A
Signature: *Steve Niday*
Date: 10-4-10
Reg. No. 10998LS
Employer: Missoula County Public Works, Survey Office

Office of Clerk and Recorder, County of Missoula, Recording Information.

201019169 B: 866 P: 1262 Pages: 1
10/04/2010 10:08:33 AM Correct Recordation
Missoula County Clerk & Recorder

Section 13
Section 24

• corner this sheet

Corner Recordation Form or Other Supporting Document

Point # 5849