

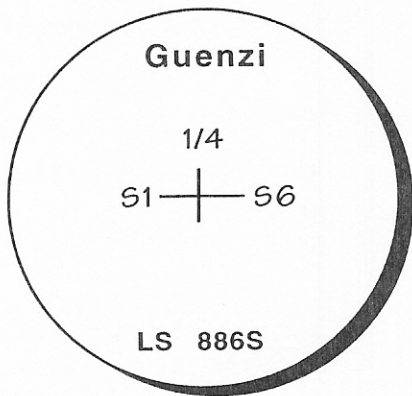
CERTIFIED CORNER RECORDATION

Corner W1/4 Corner Section 6 T. 14N R. 59E PMM Wibaux County

Original Record: Set Sandstone 12" X 10" X 3" with 1/4 on West face & pits.

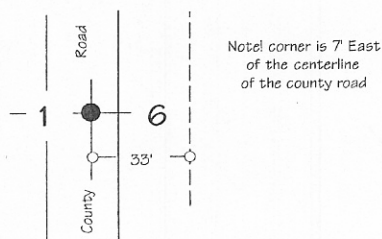
Found: Corner falls in an North-South county road. No evidence of original corner found.

Set: Aluminum cap as shown below at the proportionate position approx 4" below surface of road.



2" Aluminum cap on 1/2" X 24" rebar

Note! Dashed lines indicate fences



SKETCH OF CORNER

CERTIFICATION

I, Richard E. Guenzi certify the information shown herein is true and correct.

Richard E. Guenzi
Signature of Ground Party Chief

I, Richard E. Guenzi certify that this Corner Record correctly represents work performed by me or under my direction in compliance with the "Corner Recordation Act" (70-22-101, et seq., M.C.A.)

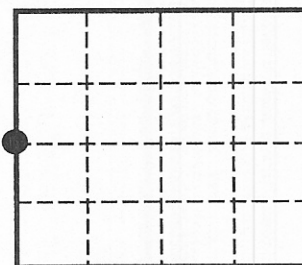
Richard E. Guenzi
Signature of Surveyor & Seal

Date: 9-30-99 Reg. No. 8865

Employer: Guenzi Surveys

Document Number: 99077
 Office of Clerk and Recorder, County of Wibaux. This "corner record" was filed for record on November 24, 1999 was noted on the cross-index plat and is assigned page No. 21, in book No. 2 *Marilyn Blome* Clerk and Recorder
 Fee: None By: _____ Deputy
 Cross Index No. C1 T. 14N R. 59E PMM

Sec. 6



● Corner this sheet

99-131