

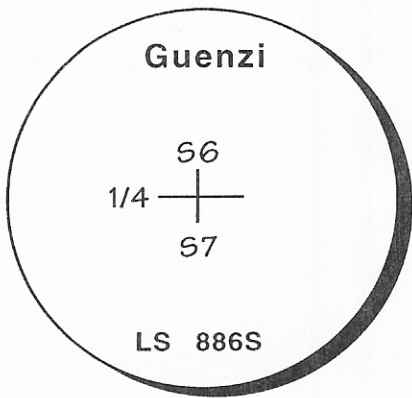
CERTIFIED CORNER RECORDATION

Corner 5/4 Corner Section 6 T. 14N R. 59E PMM Wibaux County

Original Record: Set Sandstone 20" X 10" X 3" with 1/4 on North face & pits.

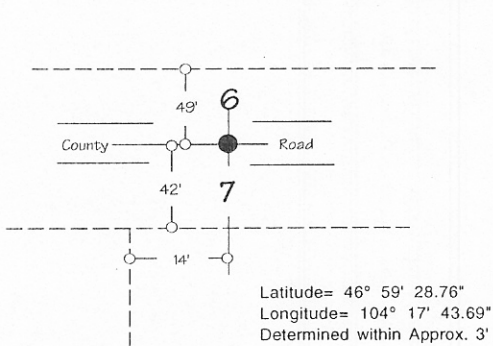
Found: Corner falls in an East-West county road. No evidence of original corner found.

Set: Aluminum cap as shown below at the proportionate position approx 4" below surface of road.



2" Aluminum cap on 1/2" X 24" rebar

Note! Dashed lines indicate fences:



SKETCH OF CORNER

CERTIFICATION

I, Richard E. Guenzi
certify the information shown herein is true
and correct.

[Signature]
Signature of Ground Party Chief

I, Richard E. Guenzi
certify that this Corner Record
correctly represents work performed
by me or under my direction in
compliance with the "Corner Recordation
Act" (70-22-101, et seq., M.C.A.)

[Signature]
Signature of Surveyor & Seal

Date: 9-30-99 Reg. No. 8865

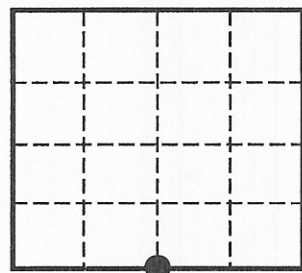
Employer: Guenzi Surveys

Document Number: 99076
 Office of Clerk and Recorder, County of Wibaux. This "corner record"
 was filed for record on November 24, 1999
 was noted on the cross-index plat and is assigned page No. 21, in
 book No. 2 *[Signature]*
 Clerk and Recorder

Fee: None By: _____
 Deputy

Cross Index No. E3 T. 14N R. 59E PMM

Sec. 6



● Corner this sheet

99-131