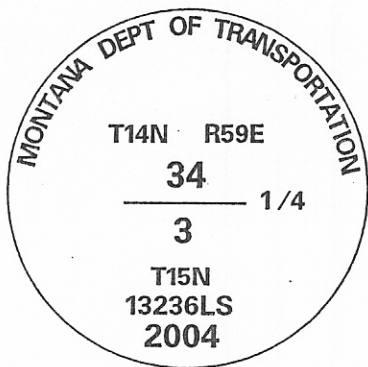
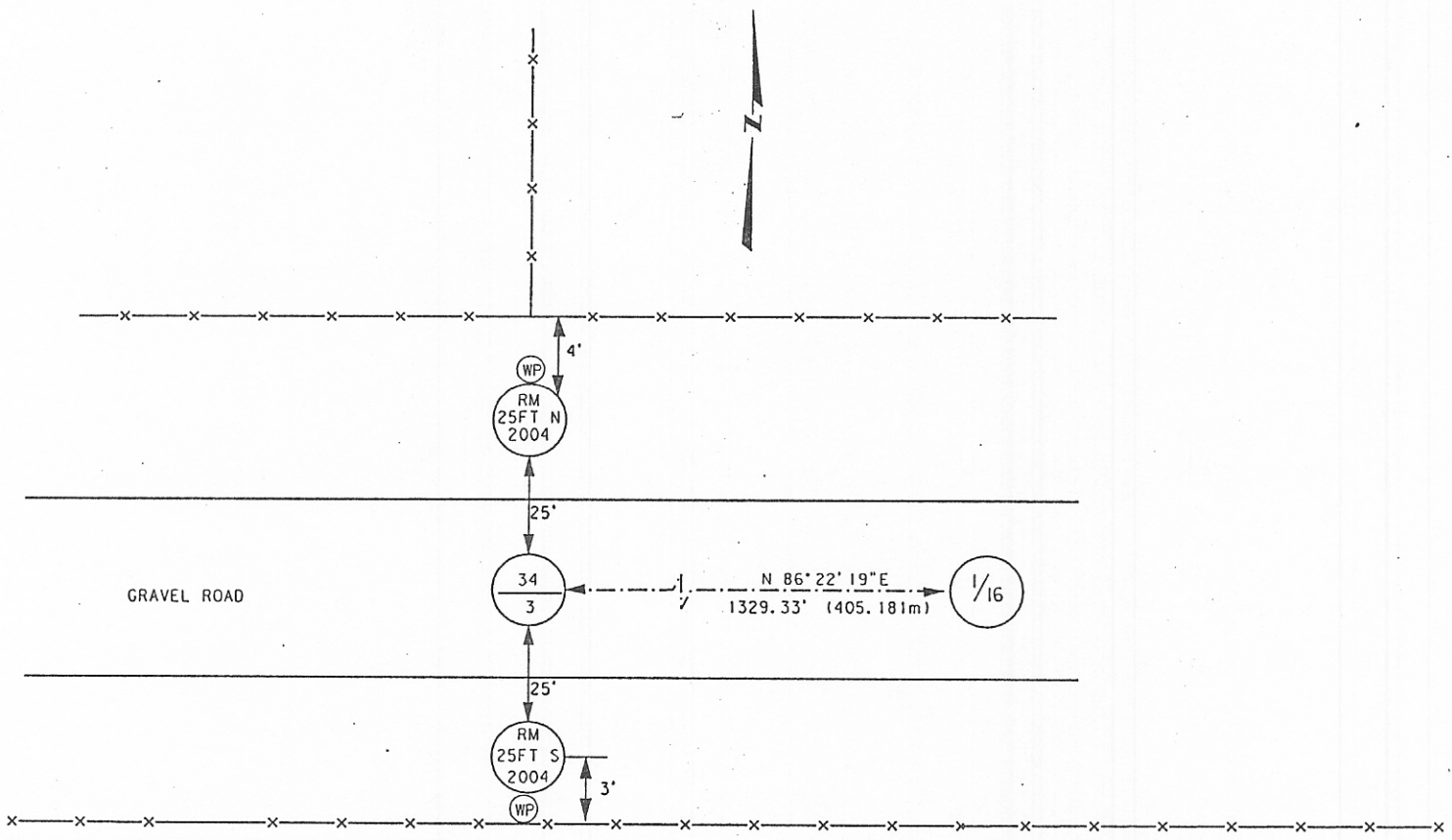


CERTIFIED CORNER RECORDATION

Corner: N1/4 Sec. 3, T.14N., R.59E., P.M.M., Wibaux County

- Original Record:** In 1881, James M. and Rodney W. Page, U.S. Deputy Surveyors, set a sand stone 14x12x4 ins., 10ins. in the ground for 1/4 sec. cor. marked 1/4 on N. face. Dig pits 18x18x12 ins. in each sec. 5 1/2 ft. dist., and raise a mound of earth 1-1/2 ft. high 3-1/2 ft. base alongside.
- Found:** In 2004, MDT Survey Crew 41-86 found a 5/8" rebar, 1.6' below gravel surface of frontage road in line with existing fence line to the North and in the centerline of frontage road. Also found yellow flagging around rebar.
- Set:** In 2004, MDT Survey Crew 41-86 set a 2" A.C. on existing rebar stamped as shown below and tied new flagging around rebar and cap. Also set 2-2" A.C. as reference monuments 25' North and South of corner with MDT Survey witness posts set alongside.



SKETCH OF CORNER

CERTIFICATION

I, Brent Silho
certify the information shown herein is true and correct.

Brent Silho
Signature of Ground Party Chief

I, Mark A. Iwanick,
certify that this Corner Record correctly represents work performed by me or under my direction in compliance with the "Corner Recordation Act" (70-22-101, et seq., MCA).

Mark A. Iwanick
Signature of Surveyor & Seal
MARK A. IWANICK
No. 13236LS

Date: 3-26-04 Registration No. #13236LS

Employer: Montana Department of Transportation

0100877

Office of Clerk and Recorder, County of Wibaux, This "corner record" was filed for record on March 29, 2004, was noted on cross-index plat, and is assigned Page No. 21-#18, in Book No. (2) Two.

Patricia Zinda
County Official

Section 3

	●	

● = Corner this sheet

Cross Index No. A-15, T. 14N., R.59E., P.M.M.

#107
5307.dgn

727