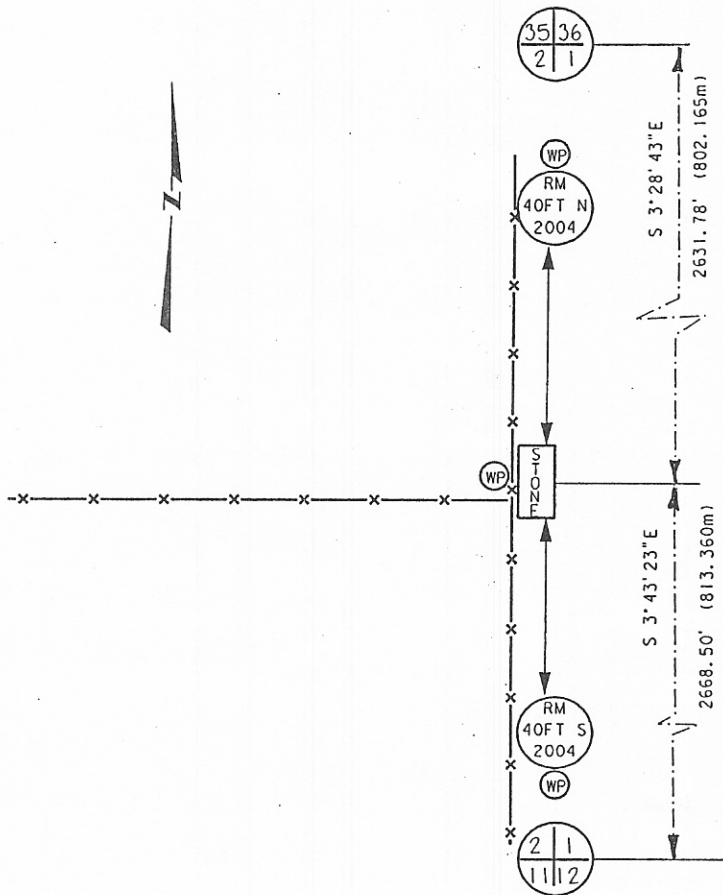


CERTIFIED CORNER RECORDATION

Corner: E1/4 Sec. 2, T.14N., R59E., P.M.M., Wibaux County

- Original Record:** In 1882, Elmer Towne, U.S. Deputy Surveyor, set a sand stone 15x10x4 ins., 10 ins. in the ground for 1/4 sec. cor. marked 14 on west face. Dig pits 18x18x12 ins. North and South of stone 5 1/2 ft. dist., and raise a mound of earth 1 1/2 ft. high 3 ft. base alongside.
- Found:** In February 2004, MDT Survey Crew 41-86 found original stone firmly set in ground 0.4' above ground at N-S-W fence intersection with 1/4 clearly marked on west face.
- Set:** In February 2004, MDT Survey Crew 41-86 set a MDT Survey witness post 1' west of stone and set 2-2" A.C. as references 40' North and South of corner with MDT Survey witness posts alongside.



CERTIFICATION

I, Brent Silho
certify the information shown herein is true and correct.

Brent Silho
Signature of Ground Party Chief

I, Mark A. Iwanlak,
certify that this Corner Record correctly represents work performed by me or under my direction in compliance with the "Corner Recordation Act" (70-22-101, et seq., MCA)

Mark A. Iwanlak
Signature of Surveyor & Recorder

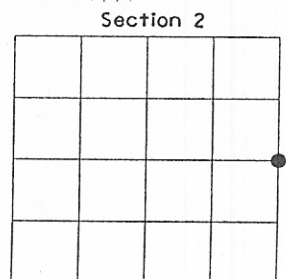
Date: 3-26-04 Registration No. #13236LS

Employer: Montana Department of Transportation

SKETCH OF CORNER

Office of Clerk and Recorder, County of Wibaux, This "corner record" was filed for record on March 29, 2004, was noted on cross-index plat, and is assigned Page No. 21-#17, In Book No. (2) Two

Patricia Zenda
County Official



● = Corner this sheet

Cross Index No. C-21, T. 14N., R.59E., P.M.M.

226