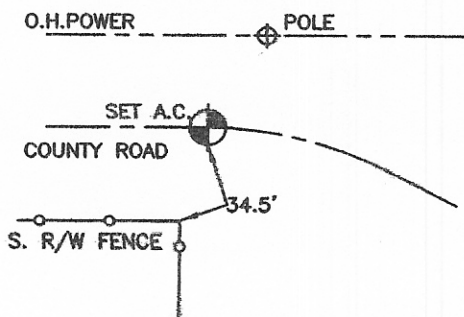
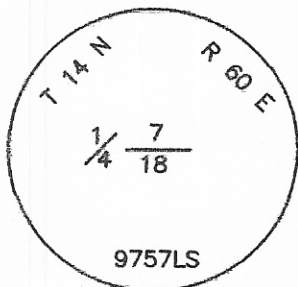
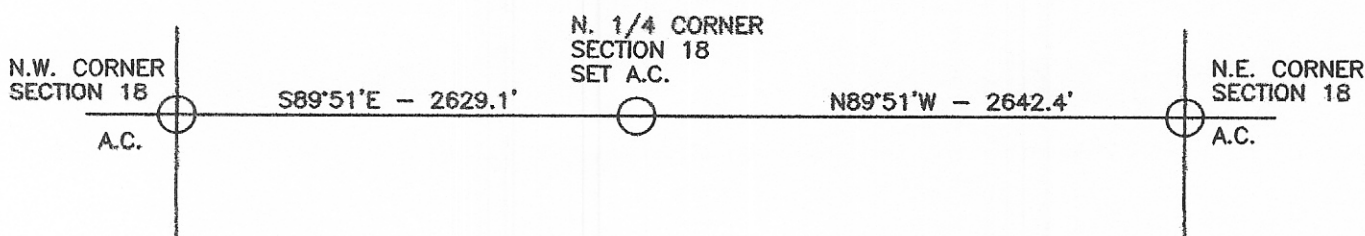


# CERTIFIED CORNER RECORDATION

Corner N.1/4 COR. - SEC. 18 T. 14 N. R. 60 E. P.M.M. WIBAUX County

1. ORIGINAL MONUMENT DISTURBED BY ROAD CONSTRUCTION.
2. SINGLE PROPORTION AND SET 5/8" X 24" REBAR WITH 1 1/2" ALUMINUM SURVEY CAP
3. SEE SKETCH FOR TIES.



SKETCH OF CORNER

**CERTIFICATION**

I, \_\_\_\_\_ certify the information shown herein is true and correct.

Signature Ground Party Chief

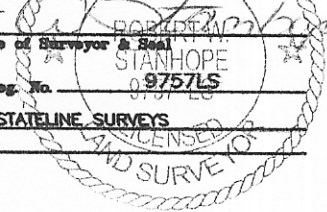
ROBERT W. STANHOPE

I, \_\_\_\_\_ certify that this Corner Record correctly represents work performed by me or under my direction in compliance with the "Corner Recordation Act" (70-22-101, et seq., M.C.A.)

*Robert W. Stanhope*  
Signature of Surveyor & Seal

Date: 3.16.08 Reg. No. 9757LS

Employer: STATELINE SURVEYS



Office 102473 CORNER Pages: 1  
STATE OF MONTANA WIBAUX COUNTY  
reco: RECORDED: 03/19/2008 9:00 KOI: CORNER  
was Patricia Zinda CLERK AND RECORDER  
FEE: \$0.00 BY: *Patricia Zinda*  
book TO: FILED NO. RETURN, .

.. This "corner

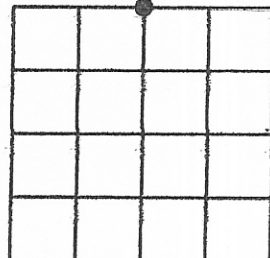
\_\_\_\_\_  
\_\_\_\_\_, in

County Official

Cross Index No. J-3 T. 14 N. R. 60 E. PMM

Adopted July 1, 1981, Montana Board of Professional Engineers & Land Surveyors

Sec. 18



• corner this sheet