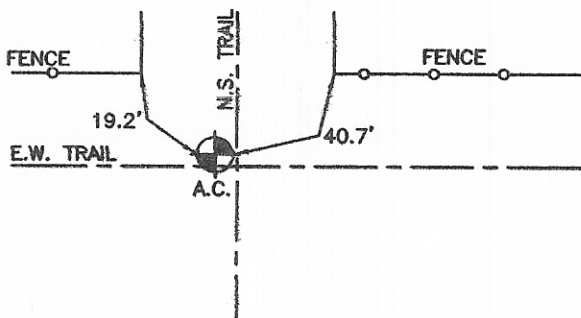
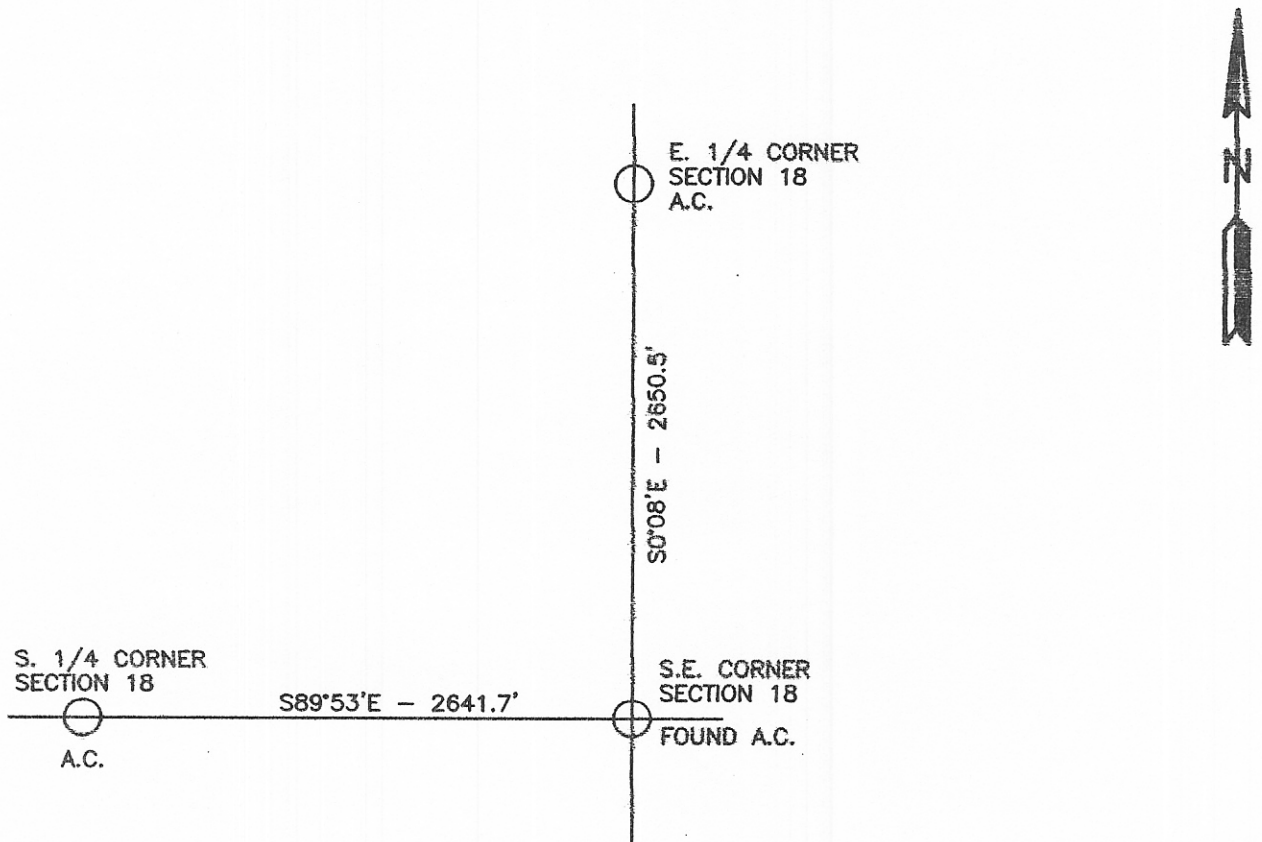


# CERTIFIED CORNER RECORDATION

Corner S.E. COR. - SEC. 18 T. 14 N. R. 60 E. P.M.M. WIBAUX County

1. FOUND 2" ALUMINUM SURVEY CAP MARKED 886S.
2. I ACCEPTED THIS AS THE CORNER POSITION.
3. SEE SKETCH FOR TIES.



SKETCH OF CORNER

**CERTIFICATION**

I, \_\_\_\_\_  
certify the information shown herein is true and correct.

Signature Ground Party Chief

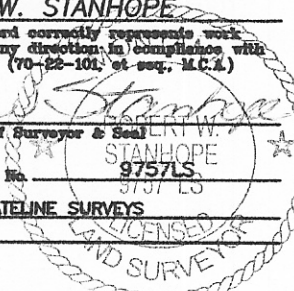
**ROBERT W. STANHOPE**

I, \_\_\_\_\_  
certify that this Corner Record correctly represents work performed by me or under my direction in compliance with the "Corner Recordation Act" (70-22-101, et seq., M.C.A.)

*Robert W. Stanhope*  
Signature of Surveyor & Seal

Date: 3.16.08 Reg. No. 9757LS

Employer: STATELINE SURVEYS



Office of 102474 CORNER Pages: 1

STATE OF MONTANA WIBAUX COUNTY  
RECORDED: 03/19/2008 9:00 KOI: CORNER

Patricia Zinda CLERK AND RECORDER  
FEE: \$0.00 BY: *Patricia Zinda*

TO: FILED NO, RETURN, .

County Official

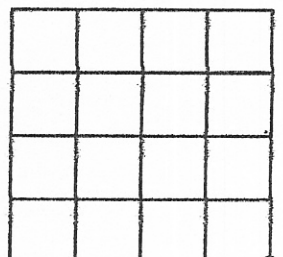
Cross Index No. N-5 T. 14 N. R. 60 E. PMM

Adopted July 1, 1981, Montana Board of Professional Engineers & Land Surveyors

This "corner

\_\_\_\_\_  
\_\_\_\_\_, in

Sec. 18



• corner this sheet