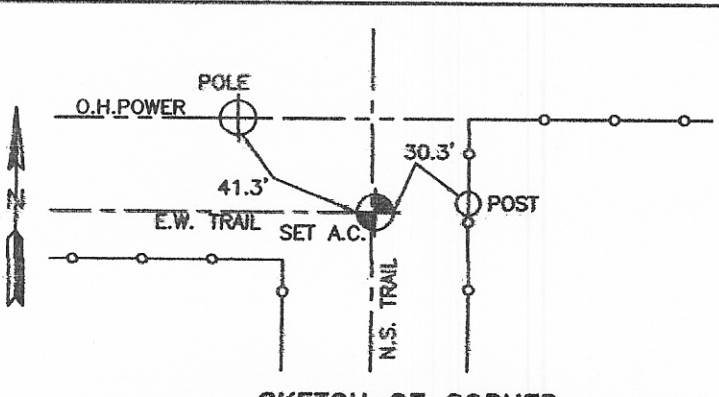
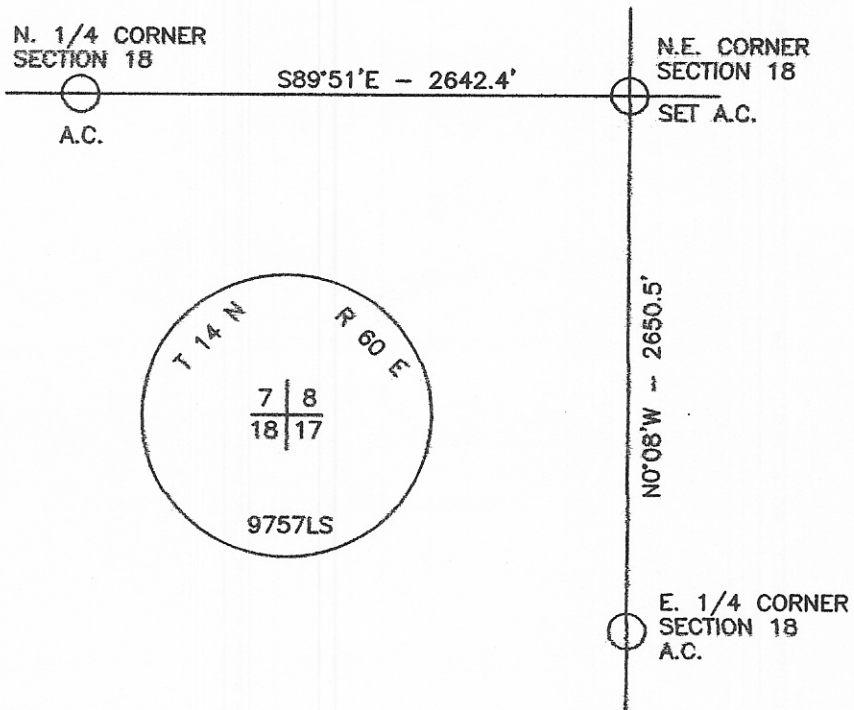


# CERTIFIED CORNER RECORDATION

Corner N.E. COR. - SEC. 18 T. 14 N. R. 60 E. P.M.M. WIBAUX County

1. NO EVIDENCE OF ORIGINAL MONUMENT.
2. MEASURED EXISTING FEATURES, FIT WELL WITH RECORD BEARING AND DISTANCE.
3. SET 5/8" X 24" REBAR WITH 1 1/2" ALUMINUM SURVEY CAP
4. SEE SKETCH FOR TIES.



SKETCH OF CORNER

**CERTIFICATION**

I, \_\_\_\_\_  
certify the information shown herein is true and correct.

Signature Ground Party Chief  
**ROBERT W. STANHOPE**

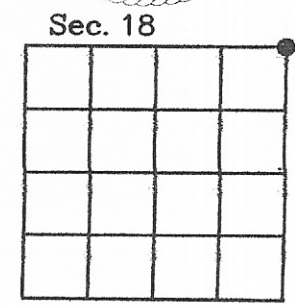
I, \_\_\_\_\_  
certify that this Corner Record correctly represents work performed by me or under my direction in compliance with the "Corner Recordation Act" (70-22-301, et seq., M.C.A.)

Signature of Surveyor & Seal  
*Robert W. Stanhope*  
STANHOPE  
9757 LS

Date: 3.8.08 Reg. No. \_\_\_\_\_  
Employer: STATELINE SURVEYS

Office 102475 CORNER Pages: 1  
 STATE OF MONTANA WIBAUX COUNTY  
 recorded RECORDED: 03/19/2008 9:00 KOI: CORNER  
 was Patricia Zinda CLERK AND RECORDER  
 FEE: \$0.00 BY: *Patricia Zinda*  
 book TO: FILED NO. RETURN, .

.. This "corner" \_\_\_\_\_  
 \_\_\_\_\_, in \_\_\_\_\_  
 \_\_\_\_\_  
 County Official



Cross Index No. J-5 T. 14 N. R. 60 E. P.M.M.

Adopted July 1, 1981, Montana Board of Professional Engineers & Land Surveyors

• corner this sheet