

CERTIFIED CORNER RECORDATION

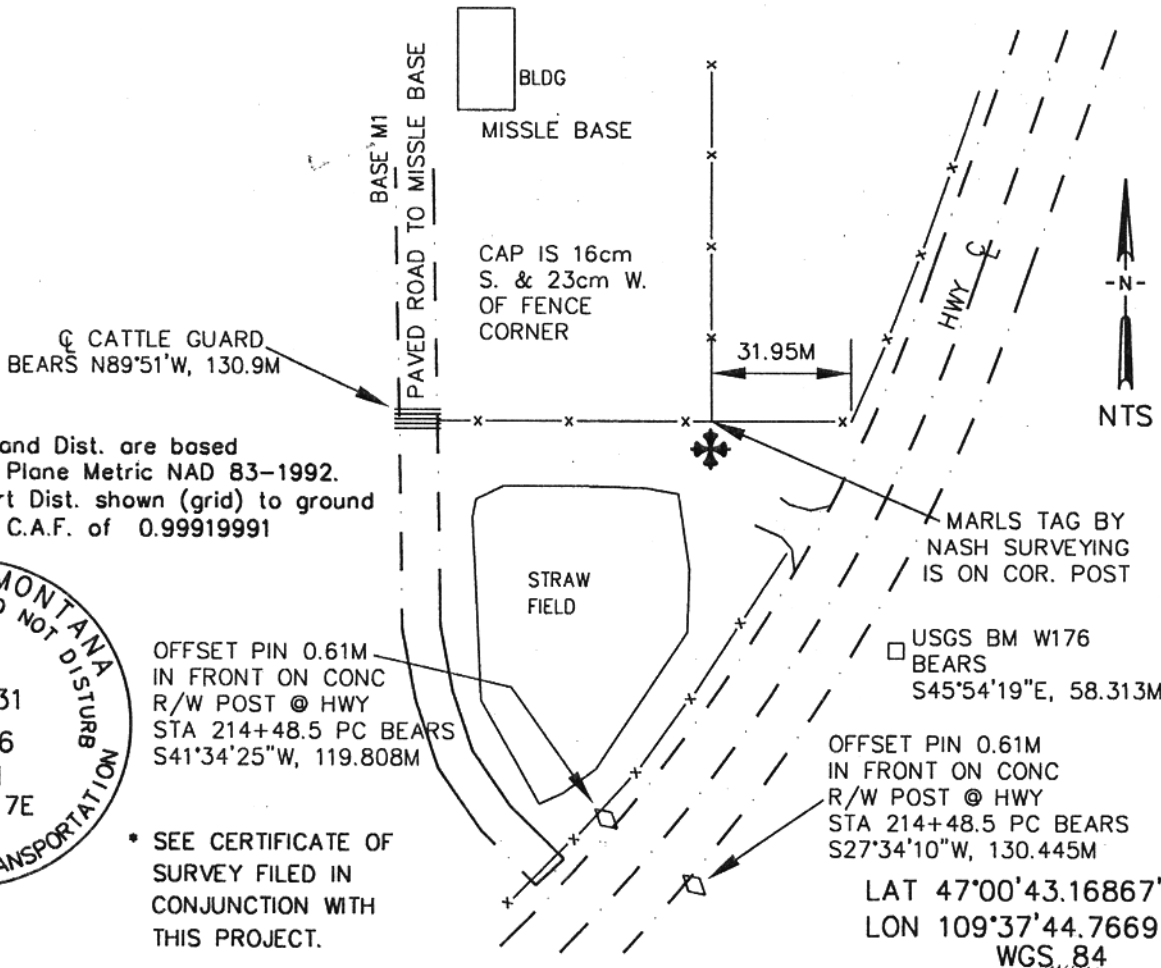
Corner 36,31 1,6 T. 14&15 N. R. 16&17 E. P.M.M. FERGUS County

Original Record: Set a limestone 18x8x5 ins 10 ins in the ground for Corner to Townships (David E. Folsom) 14 & 15 north between Ranges 16 & 17 marked with 6 notches on all 4 (Walter W. deLacy) sides. Dug pits 24x18x12ins in each Township and 6ft distant.
1875

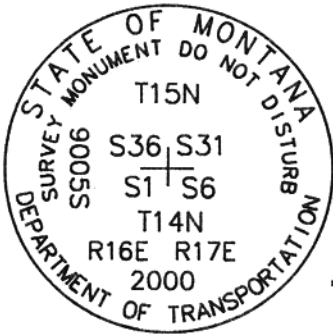
Subsequent Record: Corner Record by Stewart Nash (5210S) filed July 6, 1993 states he found stone and gave ties to R/W post to NE. This corner is referred to on C/S 485.

Evidence Found: Found limestone at .3M deep, 50x30x17cm, 6 notches on each side and witness tag on corner post.

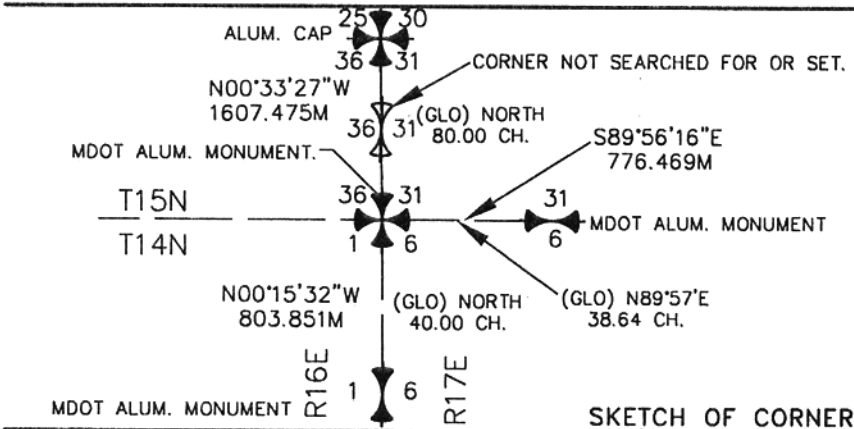
Perpetuation: Set MDT monument with 61cm No. 5 rebar inside in place of stone. Cap projects 20cm above ground. Reset stone "right-side-up" on east side of cap and flush with ground.



NOTE: *Bearing and Dist. are based on State Plane Metric NAD 83-1992. To convert Dist. shown (grid) to ground divide by C.A.F. of 0.99919991



* SEE CERTIFICATE OF SURVEY FILED IN CONJUNCTION WITH THIS PROJECT.



CERTIFICATION

I, Scott Bloomer, certify the information shown herein is true and correct.

Signature of Ground Party Chief

I, Scott Bloomer, certify that this Corner Record Correctly represents work performed by me or under my direction in compliance with the "Corner Recordation Act" (20-23-101, et. seq., M.C.A.)

Signature of Surveyor & Seal

Date: 9/24/2001 Reg. No. 9005 LS

Employer: HKM Engineering Inc Billings, MT

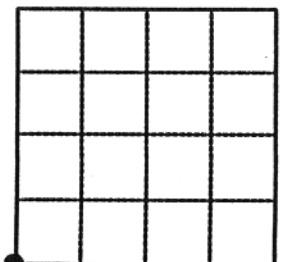
Office of Clerk and Recorder, County of FERGUS. This "corner record" was filed for record on SEP 26 2001 was noted on the cross-index plat and is assigned page No. 55, in book No. 6

Susan M. Worthy
County Official

Cross Index No. Z-1 T. 15 N. R. 17 E. PMM

Adopted July 1, 1981, Montana Board of Professional Engineers & Land Surveyors

Sec. 31-T15N-R17E



61837

• - corner this sheet