

CERTIFIED CORNER RECORDATION

Corner 1/4 31|32 T. 15 N. R. 17 E. P.M.M. FERGUS County

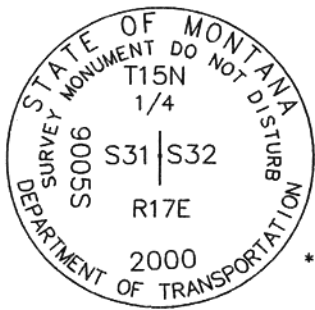
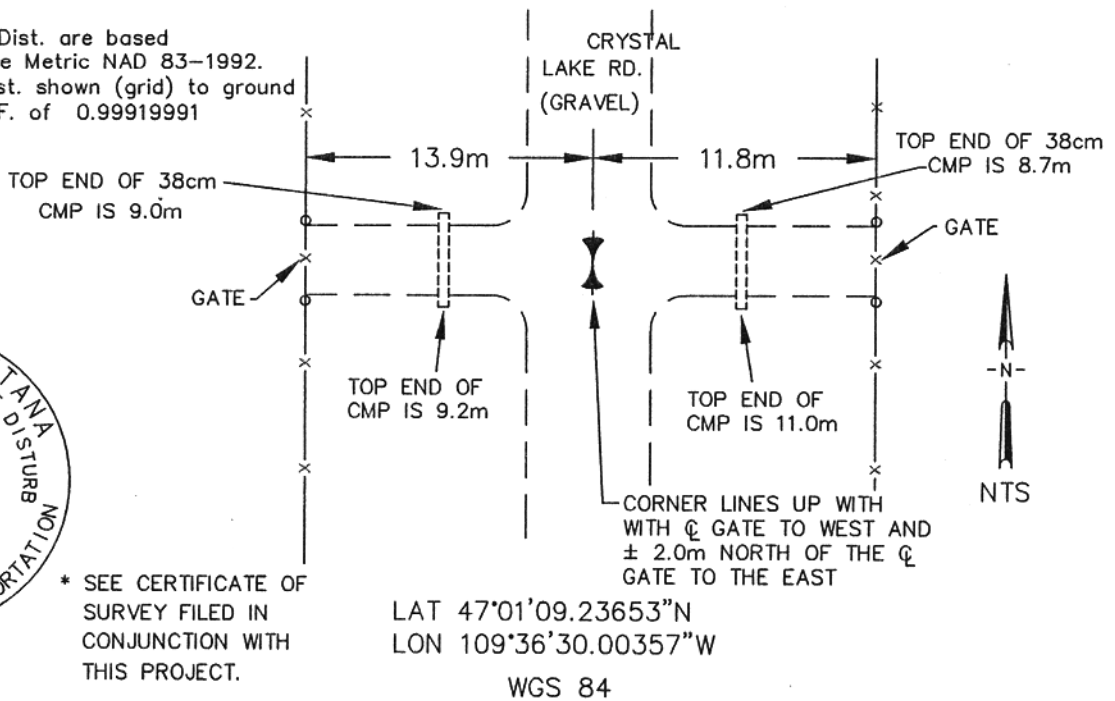
Original Record: Set a limestone 16x8x5 ins 11 ins in the ground for Qt. Sec. Corner marked (David E. Folsom) "1/4" on W. face. Dug pits 18 ins sq. 12 ins deep N, S, E & W. 5 1/2ft distant. (Walter W. deLacy) 1875

Subsequent Record: C/S 485 used ϕ road and fenceline 1/2 mile to the east to establish corner. However, no monument was set.

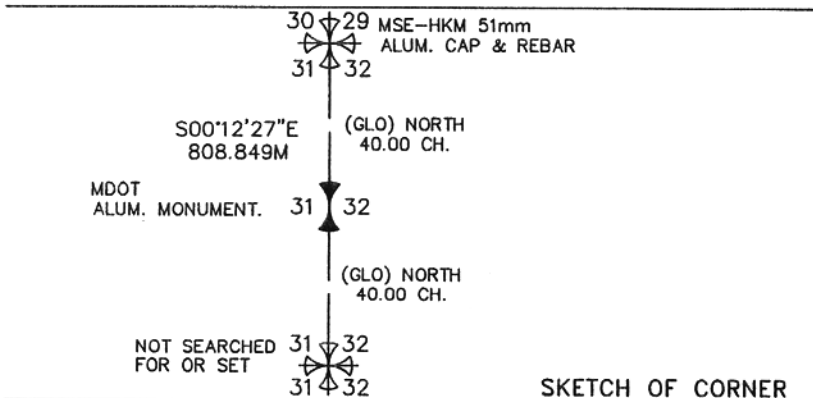
Evidence Found: No evidence of original stone. Found monuments from C/S 485 were used to compute this position. When digging hole for monument we found a 6" spike 15cm below surface.

Perpetuation: Set a standard MDT Aluminum Monument so that the cap is 17cm below ground. Set a No.5 61cm long rebar inside of Monument. Cap is stamped as shown below.

NOTE: *Bearing and Dist. are based on State Plane Metric NAD 83-1992. To convert Dist. shown (grid) to ground divide by C.A.F. of 0.99919991



* SEE CERTIFICATE OF SURVEY FILED IN CONJUNCTION WITH THIS PROJECT.



CERTIFICATION

I, _____ certify the information shown herein is true and correct.

Signature of Ground Party Chief
SCOTT BLOOMBERGER

I, Scott Bloomberger certify that this Corner Record correctly represents work performed by me or under my direction in compliance with the "Corner Recordation Act" (70-22-101, et seq., M.C.A.)

Signature of Surveyor & Seal
Scott Bloomberger

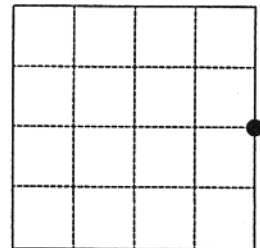
Date: 9/24/2001 Reg. No. 9005LS

Employer: HKM Engineering Inc Billings, MT

Office of Clerk and Recorder, County of FERGUS. This "corner record" was filed for record on SEP 26 2001

was noted on the cross-index plat and is assigned page No. 54 in book No. 6 Larry A. Schickley Don M. Winkler County Official

Sec. 31-T15N-R17E



Cross Index No. X-5 T. 15 N. R. 17 E. PMM

Adopted July 1, 1981, Montana Board of Professional Engineers & Land Surveyors

61836

• - corner this sheet

35