

CERTIFIED CORNER RECORDATION

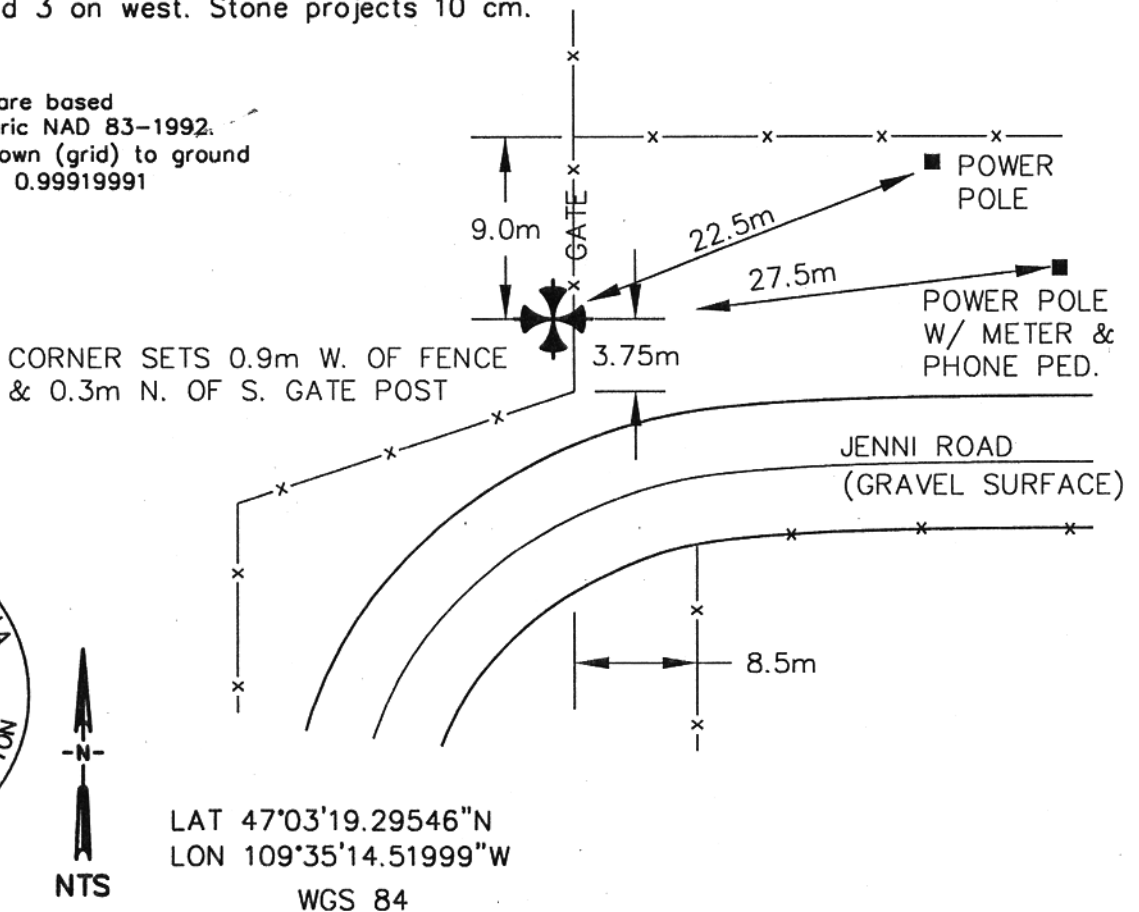
Corner 17 16
20 21 T. 15 N. R. 17 E. P.M.M. FERGUS County

Original Record: At Corner on true line. Set a Limestone 15x8x6 in. 10 in. in the ground for Corner to Sections 16, 17, 20 & 21 marked with 3 notches S. & 4 notches E. Dug pits 18 in. sq. x12 in. deep in each Section. 5 1/2 ft distant.
(W.W. deLacy
D.E. Folsom)
1875

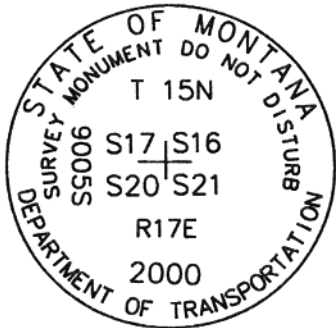
Evidence Found: 40x30x18 cm limestone marked as described. Stone was laying on its side. Landowner, Mr. Floyd Jenni, told us he had reset this stone years ago but had put it in its original position once it had tipped over.

Perpetuation: Replaced stone with standard MDT Alum. monument. Cap is stamped as shown below. Set No. 5 rebar 46 cm long inside pipe - cap is flush with original stone, which we reset right side up but with 4 marks on south and 3 on west. Stone projects 10 cm.

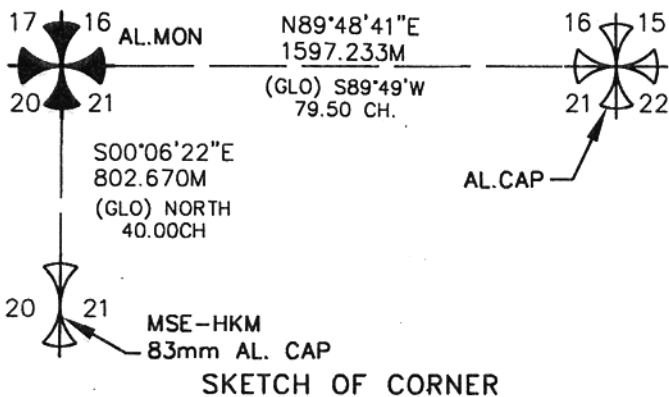
NOTE: *Bearing and Dist. are based on State Plane Metric NAD 83-1992. To convert Dist. shown (grid) to ground divide by C.A.F. of 0.99919991



* SEE CERTIFICATE OF SURVEY FILED IN CONJUNCTION WITH THIS PROJECT.



LAT 47°03'19.29546"N
LON 109°35'14.51999"W
WGS 84



SKETCH OF CORNER

CERTIFICATION

MONTANA

I, _____ certify the information shown herein is true and correct.

Signature Ground Party Chief LS

I, Scott Bloomerader certify that this Corner Record correctly represents work performed by me or under my direction in compliance with the "Corner Recordation Act" (70-22-101 et seq. M.C.A.)

Signature of Surveyor & Seal

Date: 9/24/2001 Reg. No. 9005 LS

Employer: HKM Engineering Inc Billings, MT

Office of Clerk and Recorder, County of FERGUS. This "corner

record" was filed for record on 9-26-2001

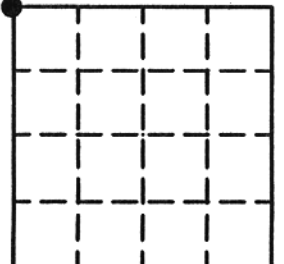
was noted on the cross-index plot and is assigned page No. 29, in

book No. 6 Larry A. Liberty Susan M. Wesley - Dep
County Official

Cross Index No. N-9 T. 15 N. R. 17 E. PMM

Adopted July 1, 1981, Montana Board of Professional Engineers & Land Surveyors

Sec. 21-T15N-R17E



61811

• - corner this sheet