

CERTIFIED CORNER RECORDATION

Corner SW SECTION 9 T. 15N R. 17E P.M.M. FERGUS County

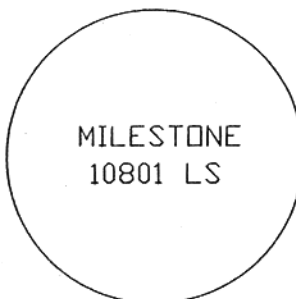
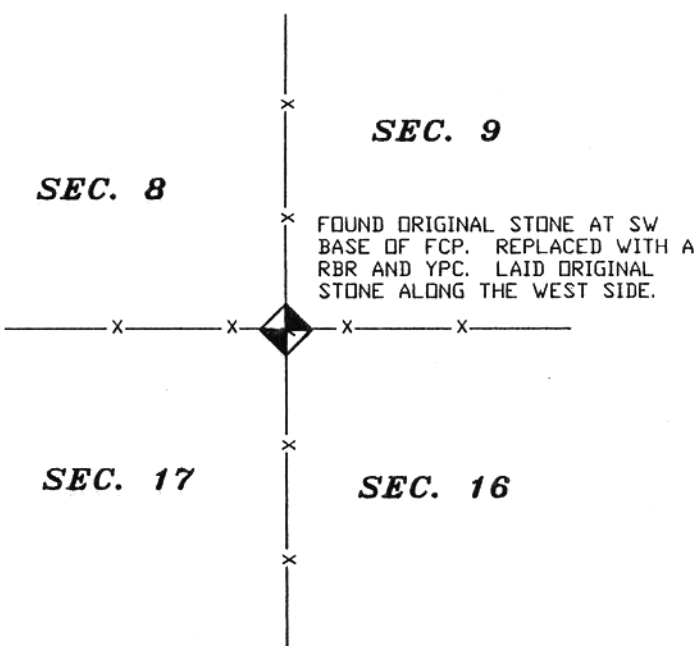
ORIGINAL RECORD: (Delacy, 1875) Set a limestone 18x10x6 ins 10 ins in the ground for the corner to Secs. 16, 17, 8 and 9 marked 4 notches in the east and 4 notches in the west faces and dug pits in each section 18 ins. deep 12 ins wide and 5 1/2 ft distant.

SUBSEQUENT RECORD: No subsequent record.

EVIDENCE FOUND: (August, 2003) Found a set stone at the southwest base of a 12 inch diameter fence corner post (N-S-E-W) 6" x 7" x 19" 10" above ground with 4 notches in the east and 4 notches in the north faces.

PERPETUATION: (August, 2003) Replaced stone with a rebar and yellow plastic cap marked "Milestone 10801 LS" and laid the original stone along the west side. See drawing below.

SEE ASSOCIATED CERTIFICATE OF SURVEY



97-148

CERTIFICATION

I, _____, certify the information shown herein is true and correct.

Signature Ground Party Chief

Scott C. Koterba

I, _____, certify that this Corner Record correctly represents work performed by me or under my direction in compliance with the "Corner Recordation Act" (70-22-101, et seq., M.C.A.)

Scott C. Koterba
Signature of Surveyor & Seal

Date: 2/17/04 Reg. No. 10801 LS

Employer: Milestone Surveying

SKETCH OF CORNER

_____. This "corner

is on page No. 6, in

County Official

Cross Index No. J-9 T. 15N R. 17E PMM

Sec. 9

• corner this sheet

074016 Fee: \$.00 Bk Pg

FERGUS COUNTY Filed 02/18/2004 At 08:50 AM
Kathy Fleharty, Clk & Rodr By Jim Mansau
Return to: FERGUS COUNTY 742 WEST MAIN
LEWISTOWN, MT 59457

book No. 292