

CERTIFIED CORNER RECORDATION

Corner: N 1/4 SEC 8 T. 15N R. 18E P.M.M. FERGUS County

Original Record: 1875, FOLSOM

SET A LIMESTONE 6 X 4 X 3 IN. MARKED WITH AN X, 12 IN. IN THE GROUND FOR QUARTER SECTION CORNER. RAISED A MOUND OF STONES 2 FT. HIGH WITH A 4 1/2 FT. BASE AND DUG PITS 18 IN. SQ., 12 IN. DEEP, NSEW, 5 1/2 FT. DISTANT.

Subsequent Record:

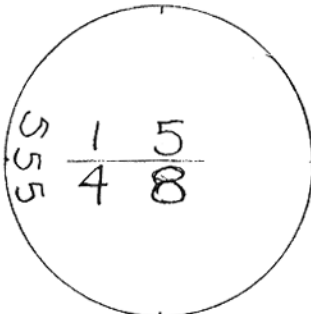
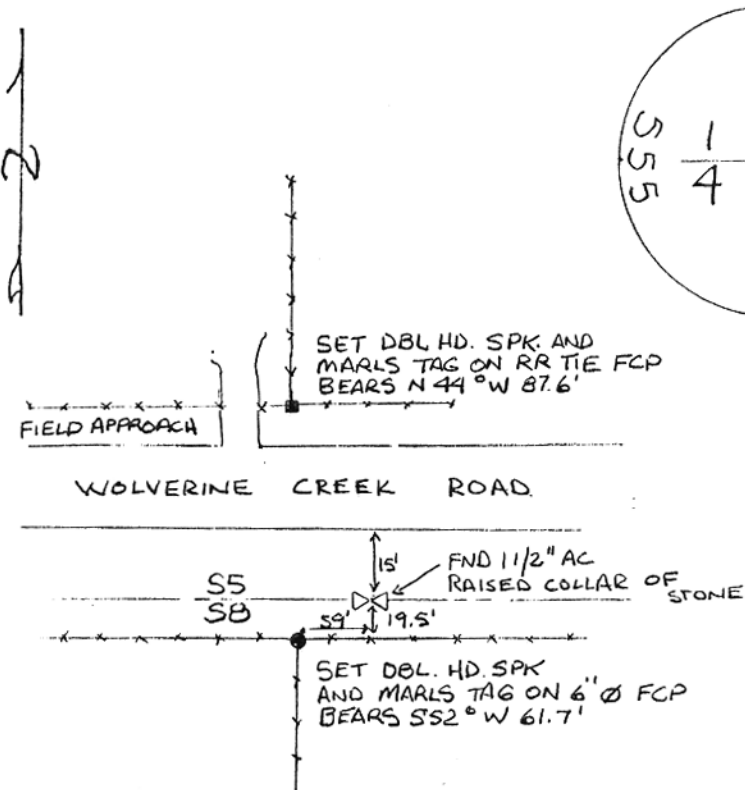
C/S 97

Evidence found:

FOUND 5/8 IN. REBAR WITH 1 1/2 IN. ALUMINUM CAP, MARKED AS DESCRIBED BELOW. (PER C/S 97)

Perpetuation:

SET DOUBLE HEADED SPIKE AND MARLS TAG ON RAILROAD TIE FENCEPOST BEARS N44°W, 87.6'. SET DOUBLE HEADED SPIKE AND MARLS TAG ON 6" DIAMETER FENCEPOST BEARS S52°W, 61.7'. RAISED COLLAR OF STONES AROUND ALUMINUM CAP.



96-53

CERTIFICATION	
I, _____ certify the information shown is true and correct.	
Signature Ground Party Chief	
I, <u>Scott C. Koterba</u> certify that this Corner Record correctly represents work performed by me or under my direction in compliance with the "Corner Recordation Act" (70-22-101, et seq., M.C.A.)	
Signature of Surveyor & Seal	
Date: <u>10/22/96</u>	Reg. No. <u>10801 LS</u>
Employer: <u>Milestone Surveying, Inc.</u>	

Office of Clerk and Recorder, County of FERGUS. This "corner

record" was filed for record on OCT 30 1996

was noted on the cross-index plat and is assigned page No. 192 in

book No. 4

Larry A. Schmitz
County Official

Cross Index No. E-7 T. 15N R. 18E PMM

Adopted July 1, 1981, Montana Board of Professional Engineers and Land Surveyors

Sec. 8

	●		

39730