

079657

### CERTIFIED CORNER RECORDATION

Corner  $\frac{1}{4}$   $\frac{S10}{S15}$  T. \_\_\_\_\_ R. \_\_\_\_\_ P.M.,M. \_\_\_\_\_  
T. 15N R. 18E P.M.,M. FERGUS County

1875 GLO Original Survey by Walter W. de Lacy Book 841 Page 26:

"Set a Limestone 12x8x6 in 8 in. in the ground for Qr. Sec. Cor. marked  $\frac{1}{4}$ " on north face. Dug pits 18in Sq. 12 in deep N. S. E. W.  $5 \frac{1}{2}$  ft distant."

1973 F 103(14) R/W Plans by MDT: "I Pin at  $\frac{1}{4}$  Corner"

1999 COS 640 by S. Koterba (10801LS): "Found I Pin in Mon Box"

2000 COS 647 by S. Koterba (10801LS): "Found I Pin in Mon Box"

2003 COS 724 by T. Jensen (15258LS): "Bolt in Cover"

2004 Recovery and Remonumentation by Stark (12249LS):

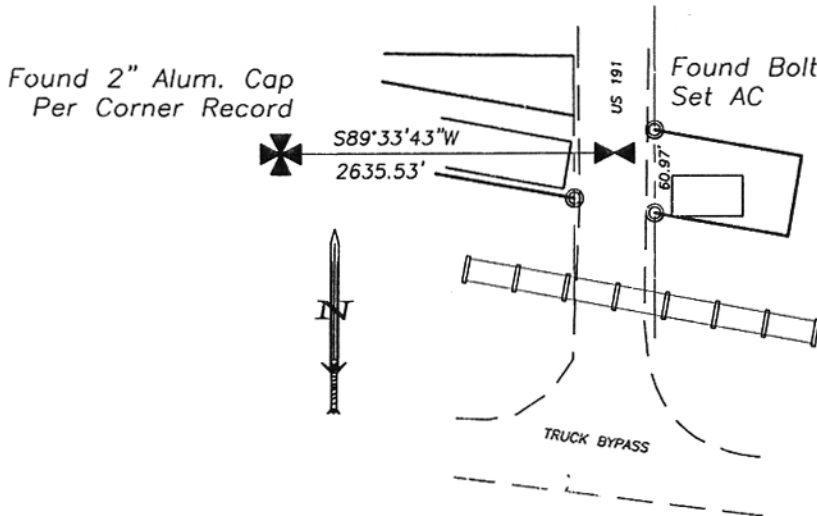
I find a .7" square bolt in a monument box in the centerline of U.S. Hwy 191 North. This monument fits ties to numerous surveys and right of way plans of record. At the position inside the monument case marked by the found bolt, I set a 2.5" dia. aluminum pipe, 24" long, with a  $3 \frac{1}{4}$ " dia. MDT aluminum cap marked as shown below. The Alum. Cap is 1cm below the surface of the road, and is inside the existing monument box.

From which:

A  $1 \frac{1}{4}$ " Yellow Plastic Cap marked "MILESTONE 10801LS" on a  $\frac{5}{8}$ " dia. rebar bears N60°18'34"E 34.43 feet dist.

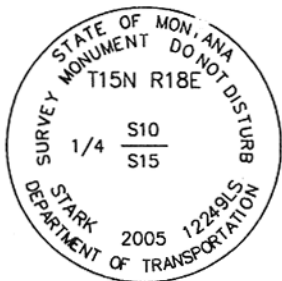
A  $1 \frac{1}{4}$ " Yellow Plastic Cap marked "MILESTONE 10801LS" on a  $\frac{5}{8}$ " dia. rebar bears S34°28'52"E 53.27 feet dist.

A  $1 \frac{1}{4}$ " Yellow Plastic Cap marked "MILESTONE 10801LS" on a  $\frac{5}{8}$ " dia. rebar bears S41°39'24"W 44.65 feet dist.



Refer to Certificate Of Survey filed in conjunction with this corner record for ties to adjacent section controlling corners.

Bearings listed in remonumentation section were measured with GPS, grid north and ground distances, or a hand compass, decl. 14' East



SKETCH OF CORNER

#### CERTIFICATION

I, \_\_\_\_\_  
CERTIFY THAT THE ABOVE INFORMATION IS TRUE AND CORRECT

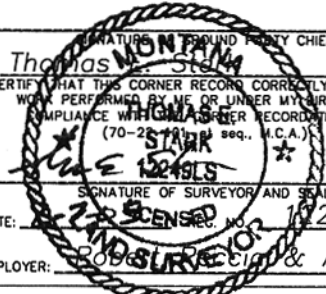
\_\_\_\_\_  
SIGNATURE OF FOUND PARTY CHIEF

I, Thomas Jensen  
CERTIFY THAT THIS CORNER RECORD CORRECTLY REPRESENTS  
WORK PERFORMED BY ME OR UNDER MY DIRECTION IN  
COMPLIANCE WITH THE CORNER RECORDATION ACT  
(70-28-701, et seq., M.C.A.)

\_\_\_\_\_  
SIGNATURE OF SURVEYOR AND SEAL

DATE: 2-22-2005

EMPLOYER: ROBERTSON & Assoc.



THIS "CORNER RECORD"

SECTION 15

is pg 12 IN


079657 Fee: \$ 0.00 Bk Pg  
FERGUS COUNTY Filed 06/22/2005 At 04:45 PM  
Kathy Fleharty, Clk & Rcdr By Tom Jensen  
Return to: FERGUS COUNTY 712 WEST MAIN  
LEWISTOWN, MT 59457

BOOK # 7

COUNTY OFFICIAL

CROSS INDEX NO. \_\_\_\_\_ T. \_\_\_\_\_ R. \_\_\_\_\_ P.M.,M.

CROSS INDEX NO. J-15 T. 15N R. 18E P.M.,M.

▶ CORNER THIS SHEET (#100)