

CERTIFIED CORNER RECORDATION

Corner East 1/4 Section 22 T. 15 N. R. 18 E. P.M.M. Fergus County

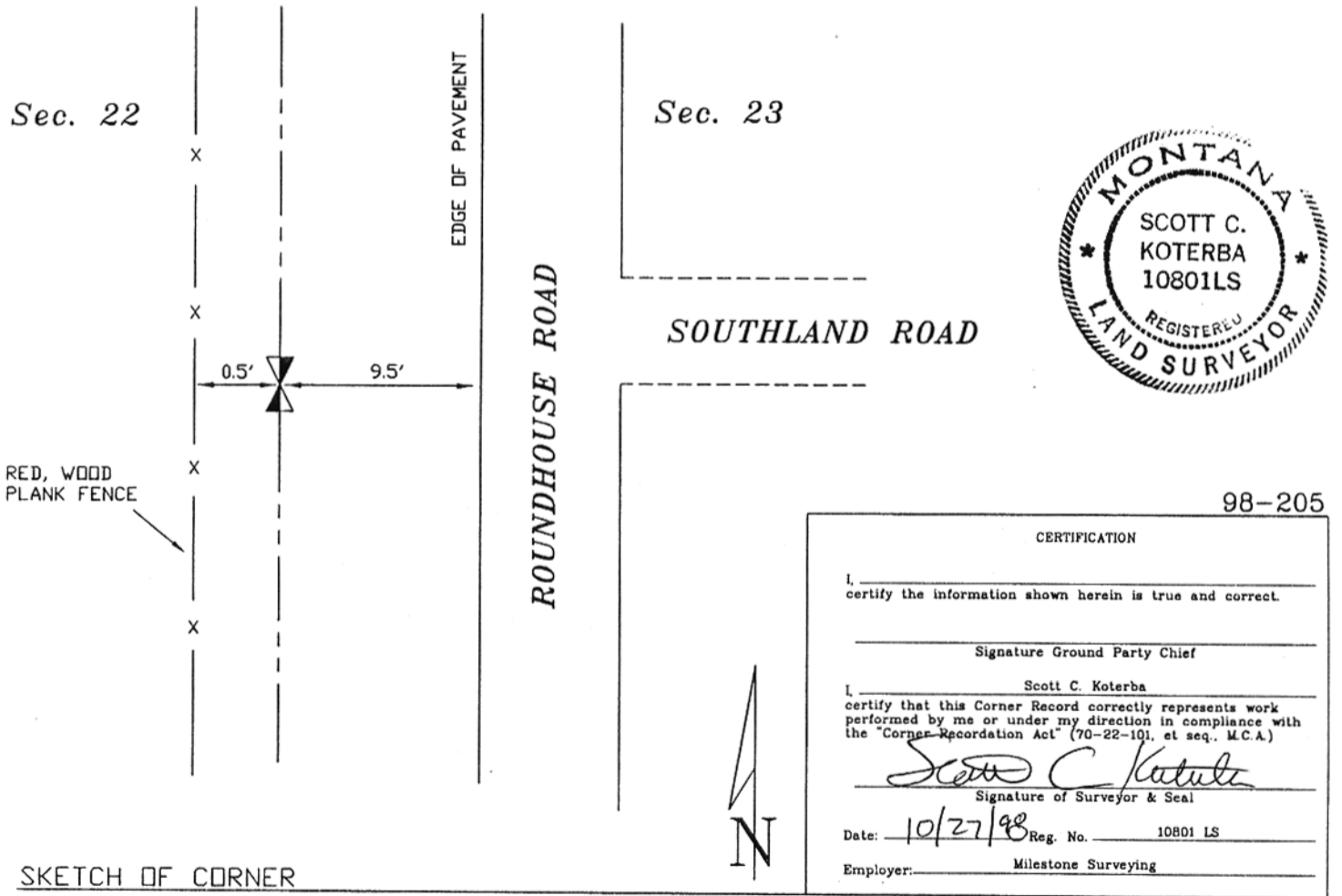
ORIGINAL RECORD: Unknown

SUBSEQUENT RECORD: (1921) Milwaukee Homesite Acre Tracts shows the corner to be on the East line of this survey.

EVIDENCE FOUND: (September, 1998) Found 1 1/2" galvanized iron pipe 0.2' out of the ground. This monument matches the corner position in relationship with found corners of Milwaukee Homesite Acre Tracts. It also matches record dimensions to section corners North and South of this corner.

PERPETUATION: (September, 1998) Accepted found monument. No accessories were set. See drawing below.

SEE EXHIBIT "A" OF ROUNDHOUSE ROAD AND SOUTHLAND ROAD



SKETCH OF CORNER

Office of Clerk and Recorder, County of FERGUS. This "corner

record" was filed for record on OCT 28 1998

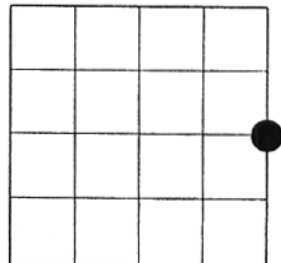
was noted on the cross-index plat and is assigned page No. 55, in

book No. 5

Larry A. Fleck
County Official *by M. Barrecl*
Sep

Cross Index No. P17 T. 15 N. R. 18 E. PMM

Sec. 22



• corner this sheet