

CERTIFIED CORNER RECORDATION

Corner East 1/4 Section 23 T. 15 N. R. 18 E. P.M.M. Fergus County

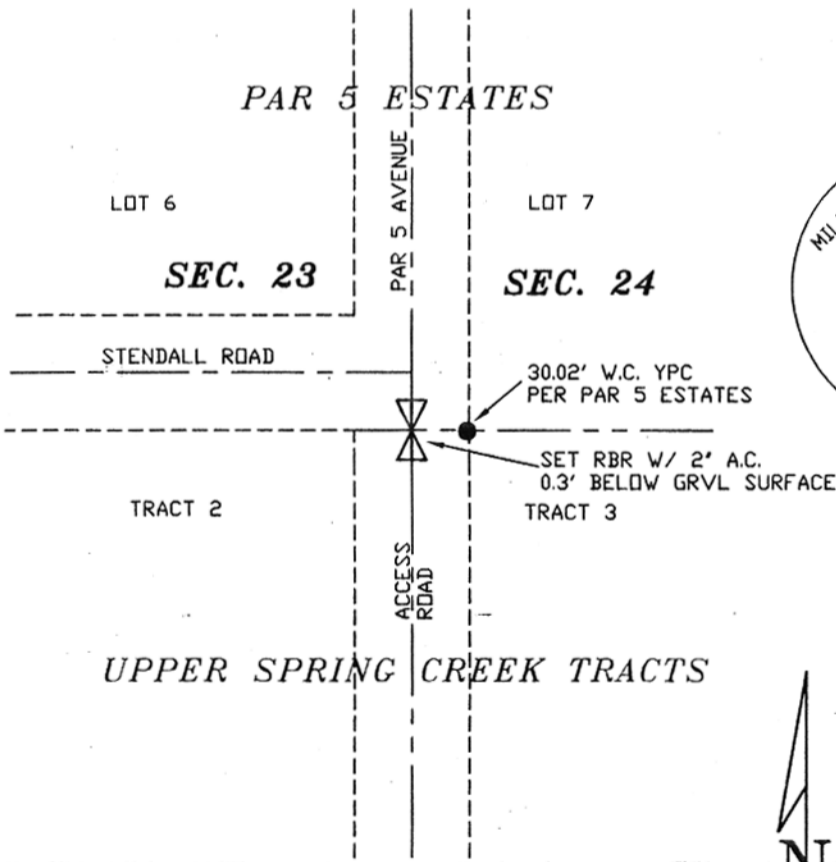
ORIGINAL RECORD: Unknown

SUBSEQUENT RECORD: Corner is referenced in the following surveys:
 Par 5 Estates Subdivision (surveyed & platted by Milestone Surveying, Inc.), C/S 103, C/S 187, C/S 473, C/S 467, C/S 468, C/S 142. I found a 5/8" rebar at the base of a steel fence corner post.

EVIDENCE FOUND: (March, 1999) Corner has been covered up by at least 3 feet of fill due to road improvements and all of the fences have been torn down.

PERPETUATION: (March, 1999) Set 5/8" rebar with 2" aluminum cap, marked as shown, 0.3' below the surface of the new road at the position tied and established as shown on Par 5 Estates Subdivision.

SEE PLAT OF PAR 5 ESTATES



99-253

CERTIFICATION

I, _____
 certify the information shown herein is true and correct.

Signature Ground Party Chief

Scott C. Koterba

I, _____
 certify that this Corner Record correctly represents work performed by me or under my direction in compliance with the "Corner Recordation Act" (70-22-101, et seq., M.C.A.)

Scott C. Koterba
 Signature of Surveyor & Seal

Date: 5/14/99 Reg. No. 10801 LS

Employer: Milestone Surveying

SKETCH OF CORNER

Office of Clerk and Recorder, County of FERGUS This "corner record" was filed for record on MAY 14 1999 was noted on the cross-index plat and is assigned page No. 94, in book No. 5

Larry A. Edehart
 County Official

Sec. 23

Cross Index No. P21 T. 15 N. R. 18 E. P.M.M.

• corner this sheet