

# CERTIFIED CORNER RECORDATION

Corner Southwest corner Section 13 T.15 N. R. 18 E. P.M.M. Fergus County

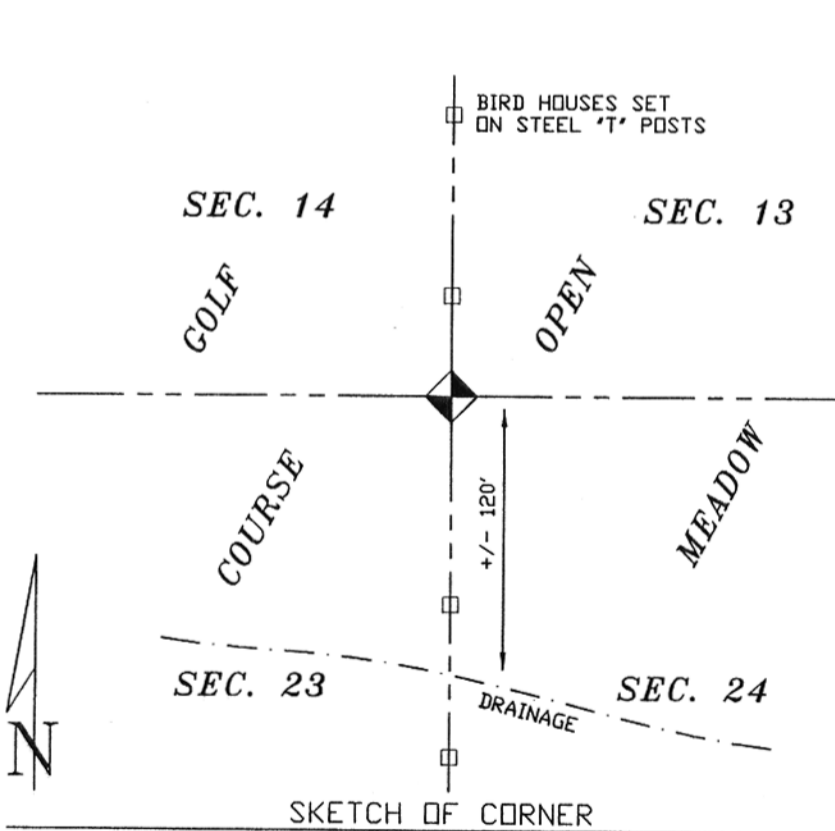
ORIGINAL RECORD: Unknown

SUBSEQUENT RECORD: (Nash, 1993 C/S 473) Found 3"x 12" iron bar driven into sandstone, bent to South.

EVIDENCE FOUND: (September, 1998) Found broken vertically set sandstone with 60d spike set in middle and 3" angle iron bar bent to the South.

PERPETUATION: (September, 1998) Replaced 60d spike with 5/8" rebar with 2" aluminum cap, marked as shown, and set steel "T" post 1.0' North of corner with MARLS tag. See drawing below.

SEE PAR 5 ESTATES SUBDIVISION



98-166

CERTIFICATION	
I, _____ certify the information shown herein is true and correct.	
Signature Ground Party Chief	
Scott C. Koterba	
I, _____ certify that this Corner Record correctly represents work performed by me or under my direction in compliance with the "Corner Recordation Act" (70-22-101, et seq., M.C.A.)	
Signature of Surveyor & Seal	
<i>Scott C. Koterba</i>	
Date: <u>10/27/98</u>	Reg. No. <u>10801 LS</u>
Employer: <u>Milestone Surveying</u>	

Office of Clerk and Recorder, County of FERGUS. This "corner

record" was filed for record on OCT 28 1998

was noted on the cross-index plat and is assigned page No. 50, in

book No. 5

*Lathy A. Stehney*  
County Official  
*by M. Barreick*  
dep

Cross Index No. N21 T. 15 N. R. 18 E. P.M.M.

Sec. 13


• corner this sheet