

2. Description of evidence found, note discrepancies in the record, state method of establishing lost or obliterated corners.
3. Description of monument and accessories set to perpetuate the corner position.
4. Sketch of corner, show all pertinent data which can best be shown in a sketch example, corner marking, topography ties, position of accessories, etc.
5. Certification must be signed and sealed by Land Surveyor registered in the State of Montana.
6. Fill in Cross Index & Section Diagram at bottom of sheet.

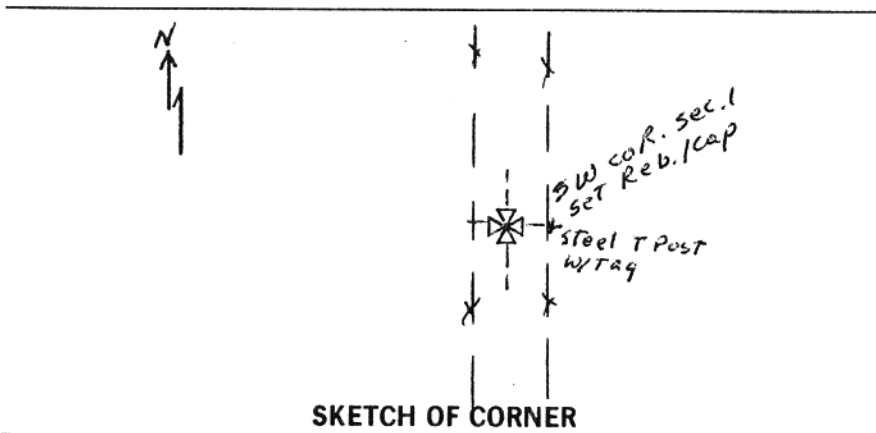
CERTIFIED CORNER RECORDATION

Corner S.W. Sec 1 T. 15 N. R. 18 E. P.M.M. Fergus County

1. Original Record 1875: Set a lime stone 15 x 9 x 8 in. 10 in. in the ground for corners to sections 1, 2, 11, & 12 marked with 5 notches South & 1 notch E. Dug pits 18 in. sq. 12 in. deep in each section 5 1/2 ft. distant.
2. No evidence found of stone or pits due to county road.
3. As nearest and best evidence, I determined the corner to be in the centerline of the Rifle Range Road, 59' wide R/W fence to R/W fence, at a proportioned north south position. Here I set a 5/8" x 18" rebar with a 2 ins. dia. Al. cap, 0.2' below the surface of the road, marked.

T	15	N	R	18	E
S	2	S	1		
S	11	S	12		
1995					

Also set a steel post 30.0' east on the section line, with a monument tag.



CERTIFICATION

I, G. S. NASH, L.S. 52105
 certify the information shown herein is true and correct.

Signature Ground Party Chief

I, STEWART NASH
 certify that this Corner Record correctly represents work performed by me or under my direction in compliance with the "Corner Recordation Act" (70-22-101, et seq., M.C.A.)

Stewart Nash
 Signature of Surveyor & Seal

Date: 3-9-95 Reg. No. 52105

Employer: SELF

Office of Clerk and Recorder, County of FERGUS. This "corner record" was filed for record on NOV - 9 1995 was noted on the cross-index plat and is assigned page No. 92, in book No. 4

Kathy A. Fleharty
 County Official

Sec. 1, T. 15N, R. 18E.

• - corner this sheet
35712

Cross Index No. E-21 T. 15N R. 18E P.M.M.