

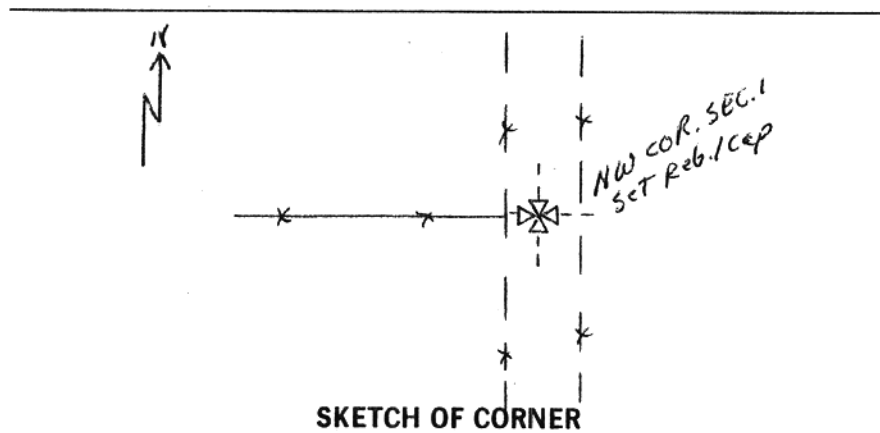
2. Description of evidence found, note discrepancies in the record, state method of establishing lost or obliterated corners.
3. Description of monument and accessories set to perpetuate the corner position.
4. Sketch of corner, show all pertinent data which can best be shown in a sketch example, corner marking, topography ties, position of accessories, etc.
5. Certification must be signed and sealed by Land Surveyor registered in the State of Montana.
6. Fill in Cross Index & Section Diagram at bottom of sheet.

## CERTIFIED CORNER RECORDATION

Corner N.W. Sec. 1 T. 15 N. R. 18 E. P.M.M. Fergus County

1. Original Record 1875: Set a sandstone 14 x 8 x 5 in. 9 in. in the ground for Corners to Sections 1, 2, 35, & 36 marked with 5 notches W. and 1 notch E. Dug pits 18 in. sq. 12 in. deep in each section 5 1/2 ft. distant.
2. No evidence found of stone or pits due to county road.
3. As nearest and best evidence, I determined the corner to be in the centerline of the Rifle Range Road, in line with a fence to the west. Here I set a 5/8" x 30" rebar with an Al. cap marked.

T 16 N	R 18 E
S 35	S 36
S 2	S 1
T 15 N	
1995	



CERTIFICATION

I, \_\_\_\_\_ certify the information shown herein is true and correct.

Signature Ground Party Chief

**STEWART NASH**

I, \_\_\_\_\_ certify that this Corner Record correctly represents work performed by me or under my direction in compliance with the "Corner Recordation Act" (70-22-101, et seq., M.C.A.).

Signature of Surveyor & Seal

*Stewart Nash*

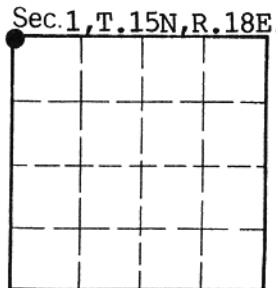
Date: 1-30-95 Reg. No. 5210S

Employer: SELF

Office of Clerk and Recorder, County of FERGUS. This "corner record" was filed for record on NOV - 9 1995

was noted on the cross-index plat and is assigned page No. 9, in book No. 4

*Larry A. Fleharty*  
County Official



Cross Index No. A-21 T. 15N R. 18E P.M.M.

• - corner this sheet