

INSTRUCTIONS

1. Original and/or subsequent record used to evaluate the corner position.
2. Description of evidence found, note discrepancies in the record, state method of establishing lost or obliterated corners.
3. Description of monument and accessories set to perpetuate the corner position.
4. Sketch of corner, show all pertinent data which can best be shown in a sketch example, corner marking, topography ties, position of accessories, etc.
5. Certification must be signed and sealed by Land Surveyor registered in the State of Montana.
6. Fill in Cross Index & Section Diagram at bottom of sheet.

CERTIFIED CORNER RECORDATION

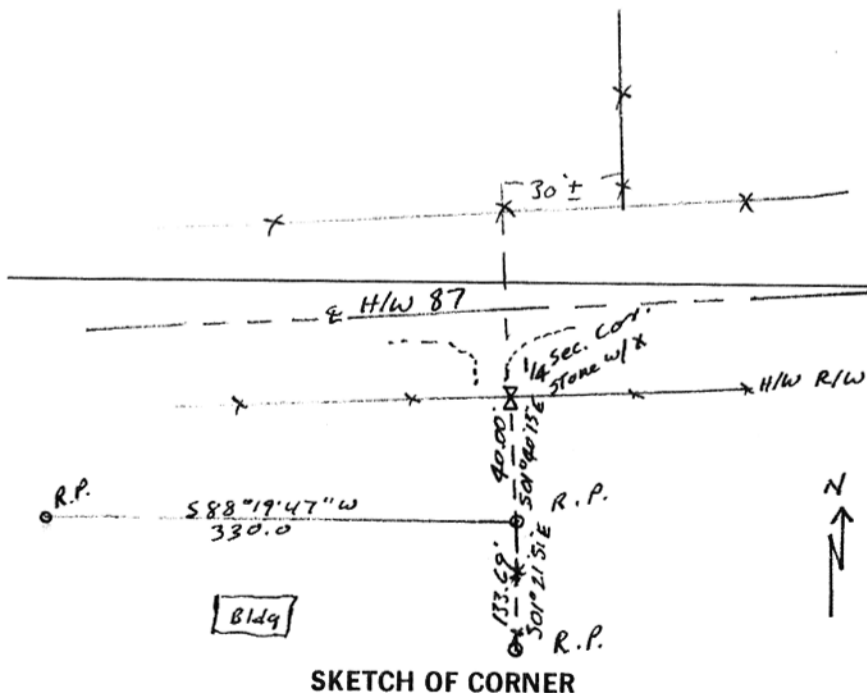
Corner N 1/4 SEC. 18 T. 15 N R. 19 E P.M.M. FERGUS County

1. ORIGINAL RECORD: Set a sandstone 16 x 6 x 6 ins., 11 ins. in the ground for 1/4 Sec. Cor., marked 1/4 on N. face. Dug pits 18 x 18 x 12 ins. E. and W. of stone, 5 1/2 ft. dist. and raised a mound of earth 1 1/2 ft. high 3 1/2 ft. base alongside.
2. Found a sandstone 12 x 11 x 5 ins. marked 1/4 on west face and an X on top, with a 1 ins. pipe 0.6 ft. south of stone. Pipe has a metal tag attached, marked

T15N R19E
Sec. 7
Sec. 18

Stone does not appear to be the original. However, the 1/4 chiseled in the side is covered with hard lichen and has apparently been in place for a number of years. I accept this as the nearest and best evidence.

3. A 5/8" dia. rebar with plastic cap mkd. Nash Surveying 5210S bears S 01°40'13" E., at 40.00 feet and from this point a 7/8" dia. pipe bears S 01°21'51" E., at 133.69 feet, and a 5/8" dia. rebar with same plastic cap bears S 88°19'47" W. at 330.00 feet.



I, _____ certify the information shown herein is true and correct.

Signature Ground Party Chief

Stewart Nash

I, _____ certify that this Corner Record correctly represents work performed by me or under my direction in compliance with the "Corner Recordation Act" (70-22-101, et seq., M.C.A.)

Stewart Nash

Signature of Surveyor & Seal

Date: 9-9-90 Reg. No. 5210S

Employer: SELF

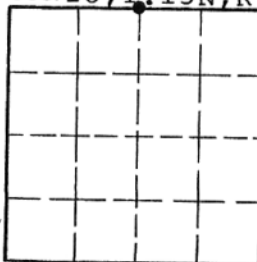
SKETCH OF CORNER

Office of Clerk and Recorder, County of FERGUS. This "corner record" was filed for record on MAY 15 1991 was noted on the cross-index plat and is assigned page No. 220, in book No. 3

County Official Kelly Clark Clerk

Cross Index No. J-3 T. 15N R. 19E P.M.M.

Sec. 18, T. 15N, R. 19E.



• - corner this sheet