

INSTRUCTIONS

1. Original and/or subsequent record used to evaluate the corner position.
2. Description of evidence found, note discrepancies in the record, state method of establishing lost or obliterated corners.
3. Description of monument and accessories set to perpetuate the corner position.
4. Sketch of corner, show all pertinent data which can best be shown in a sketch example, corner marking, topography ties, position of accessories, etc.
5. Certification must be signed and sealed by Land Surveyor registered in the State of Montana.
6. Fill in Cross Index & Section Diagram at bottom of sheet.

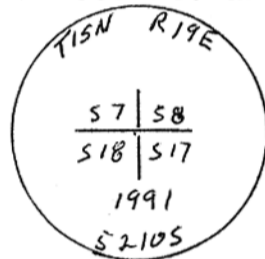
CORRECTED

CERTIFIED CORNER RECORDATION

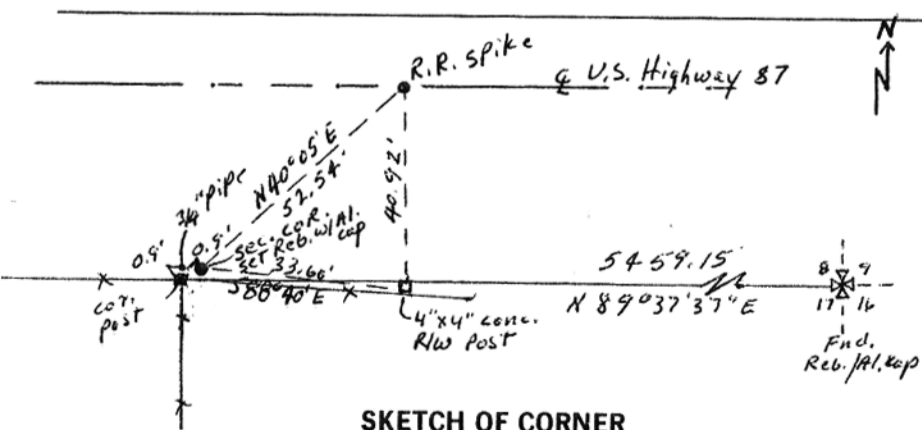
Corner N.W. SEC. 17 T. 15 N R. 19 E P.M.M. FERGUS County

1. ORIGINAL RECORD: Set a sandstone 24 x 12 x 9 ins., 18 ins. in the ground for Cor. to Sec's. 7, 8, 17 and 18 marked 4 notches on S. and 5 on E. edges. Pits and mound of earth.
2. SUBSEQUENT RENCORD: Highway department map shows a position for the corner near the south right-of-way line but had no definite tie. found a set sandstone 18 x 9 x 6 ins. flush with the ground marked with 4 notches on the S. edge and E. edge was broken off. Top of stone may have been broken off some. Stone may not be the original but has been used as the True Corner for many years.
3. In place of stone I drove a 5/8" x 30" rebar 0.3 ft. above the ground and affixed a 2" dia. alum. cap stamped

and buried the found marked stone upside down along the east side of rebar.



The previous found 3/4" dia. pipe 10 ins. above ground bears S89°40'W., 0.95 ft. A 4" x 4" conc. right-of-way marker at the top center-south edge bears S88°40'E., 33.60 ft. A railroad spike 40.92 ft. N. of the right-of-way marker in the center of the highway bears N40°05'E, 52.54 ft. A fence Cor. post of fences E-W & S is 0.9 ft. W.S.W. Attached a survey monument sign to Cor. post.



SKETCH OF CORNER

CERTIFICATION

I, _____ certify the information shown herein is true and correct.

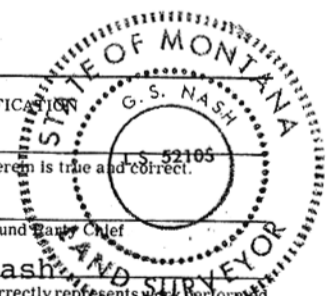
Signature Ground ~~Survey~~ Chief _____

I, Stewart Nash certify that this Corner Record correctly represents work performed by me or under my direction in compliance with the Corner Recordation Act" (70-22-101, et seq., M.C.A.)

Stewart Nash
Signature of Surveyor & Seal

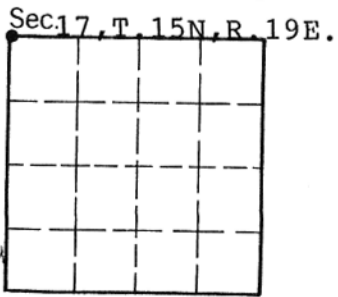
Date: 12-23-91 Reg. No. 52105

Employer: SELF



Office of Clerk and Recorder, County of Fergus. This "corner record" was filed for record on January 2, 1992 was noted on the cross-index plat and is assigned page No. 239, in book No. 3

Robin Pallett
County Official Kelly Miller



Cross Index No. J-5 T. 15N R. 19E P.M.M. corrected

• - corner this sheet