

087009

CERTIFIED CORNER RECORDATION

Corner S 1/4 SECTION 36 T. 16N R. 19E P.M.M. FERGUS County
N 1/4 SECTION 1 15N 19E

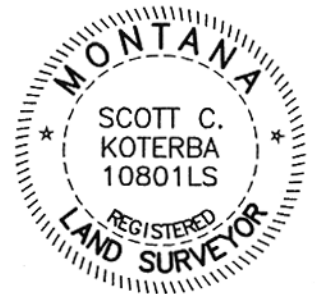
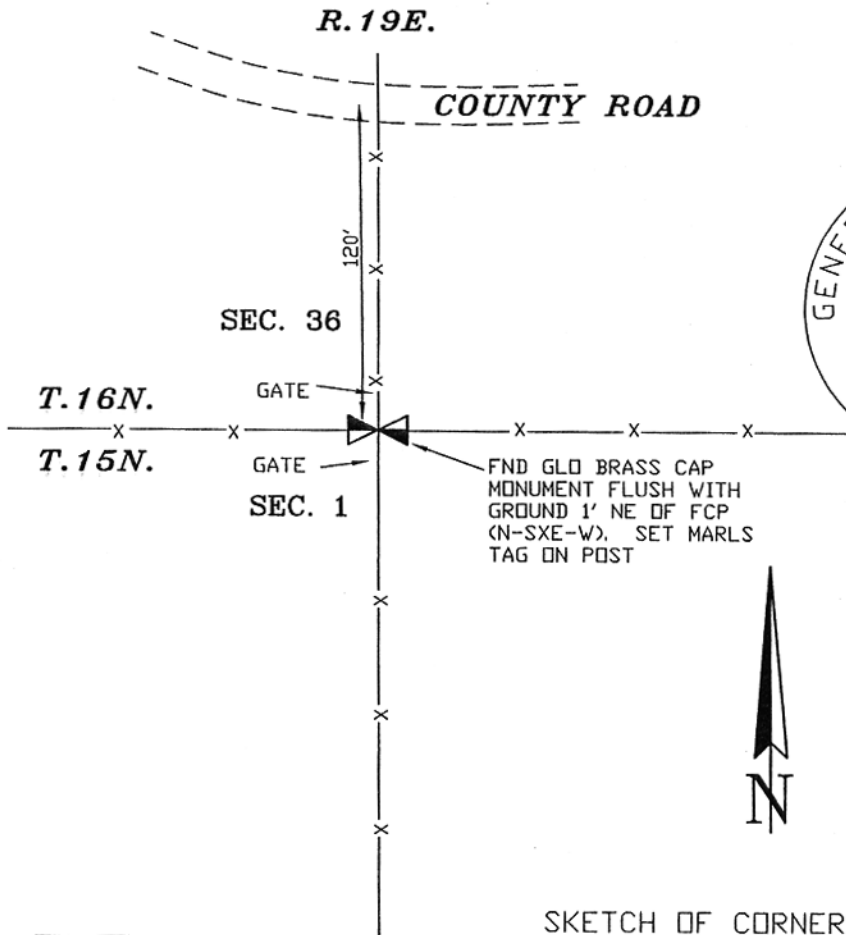
ORIGINAL RECORD: Unknown.

SUBSEQUENT RECORD: (1942, E. Parker) Found original limestone firmly set. Replaced the original stone with a iron post 3 ft. long 1 in. diam. 30 ins. in the ground for the 1/4 corner., with a brass cap marked . . . raised a mound of stone 2 ft. base 1 1/2 ft. high North of corner.

(2003, Milestone) Landowner Eldon Synder reported that a GLO brass cap had been in place at the 4-way fence corner, but had been removed in a boundary dispute. At the East base of a fence corner post North x South x East x West set a 5/8" rebar with a 2" aluminum cap. Set a MARLS tag on the fence corner post.

EVIDENCE FOUND: (January, 2007) Found GLO brass cap monument 0.1' subsurface at the NE base of FCP (N-SxE-W). Found the MARLS tag on the FCP but the 5/8" rebar with 2" aluminum cap by Milestone was gone. It appears that we did not search carefully enough during the 2003 survey. The found monument was within 0.5' of the position we had previously used for this corner. My previous corner should be ignored and the BLM monument should be used.

PERPETUATION: (January, 2007) Accepted the GLO brass cap monument as found.



07-782

CERTIFICATION

I, _____
certify the information shown herein is true and correct.

Signature Ground Party Chief

I, Scott C. Koterba
certify that this Corner Record correctly represents work performed by me or under my direction in compliance with the "Corner Recordation Act" (70-22-101, et seq., M.C.A.)

Scott C. Koterba
Signature of Surveyor & Seal

Date: 2/1/07 Reg. No. 10801 LS

Employer: Milestone Surveying

087009 Fee: \$.00 Bk Pg

FERGUS COUNTY Filed 02/05/2007 At 10:40 AM
Kathy Fleharty, Clk & Rcdr By Kim Mansour
Return to: FERGUS COUNTY 712 WEST MAIN
LEWISTOWN, MT 59457

book No. 7

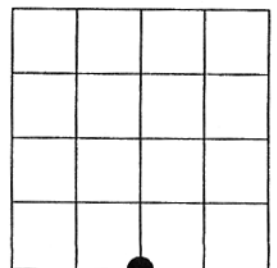
_____. This "corner

page No. 255, in

County Official

Cross Index No. Z23 T. 16N R. 19E PMM
A23 15N 19E

Sec. 36



• corner this sheet

Adopted July 1, 1981, Montana Board of Professional Engineers & Land Surveyors

087009

087009