

INSTRUCTIONS

1. Original and/or subsequent record used to evaluate the corner position.
2. Description of evidence found, note discrepancies in the record, state method of establishing lost or obliterated corners.
3. Description of monument and accessories set to perpetuate the corner position.
4. Sketch of corner, show all pertinent data which can best be shown in a sketch example, corner marking, topography ties, position of accessories, etc.
5. Certification must be signed and sealed by Land Surveyor registered in the State of Montana.
6. Fill in Cross Index & Section Diagram at bottom of sheet.

CERTIFIED CORNER RECORDATION

Standard Section Corner SECTIONS 25 & 36 T. 16N R. 13W P.M.M. Powell County

ORIGINAL RECORD: (1898 GLO) Set a sandstone 20x11x8 ins., 15 ins. in the ground, for cor. of secs. 25, 30, 31, and 36, marked with 1 notch on the S. and 5 notches on the N. faces, from which:  
 A pine, 9 ins. diam. bears N71°E., 55 lks dist. mkd. T16N R12W S30 BT  
 A pine, 9 ins. diam. bears S40°E., 44 lks dist. mkd. T16N R12W S31 BT  
 A pine, 8 ins. diam. bears S23°15'W., 37 lks dist. mkd. T16N R13W S36 BT  
 A pine, 7 ins. diam. bears N39°W., 31 lks dist. mkd. T16N R13W S25 BT

SUBSEQUENT RECORD: (1905 GLO) Intersect W. bdy. of Tp. 1.35 chs. N. of cor. of secs. 25,30,31, and 36, which is a sandstone, 9x8x5 ins. above ground, marked and witnessed as described by the surveyor general. It now refers to secs. 25 and 36 only; I obliterate the marks from the bearing trees in secs. 30 and 31.

EVIDENCE FOUND: Found a set 20"x11"x5" stone marked with marked with 1 notch on the south side and 5 notches on the north side, no sign of BT's.

PERPETUATION: In place of the stone, set a 2 1/2" diameter x 30" long aluminum pipe monument with 3 1/4" aluminum cap marked as shown below and bury the stone along east side, from which establish the following new accessories:  
 A 13" lodgepole pine bears N29°E, a distance of 14.2 feet, scribed "T16N R12W S31 BT"  
 A 11" lodgepole pine bears S7°E, a distance of 23.3 feet, scribed "T16N R12W S31 BT"  
 A 8" lodgepole pine bears S57°W, a distance of 41.6 feet, scribed "T16N R13W S36 BT"  
 A 14" lodgepole pine bears N47°W, a distance of 6.0 feet, scribed "T16N R12W S25 BT"

Forest Reserve monument No. 145 bears south a distance of 3.6 feet.

The closing corner for sections 30 and 31 T16N R12W bears north 72.1 feet.

Set a Steel post with Forest Service Land Survey Monument and property boundary decal west of monument, 3 feet distant.

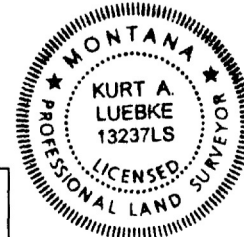
All BT's have BT & LSM signs, snowblazes and red painted rings.



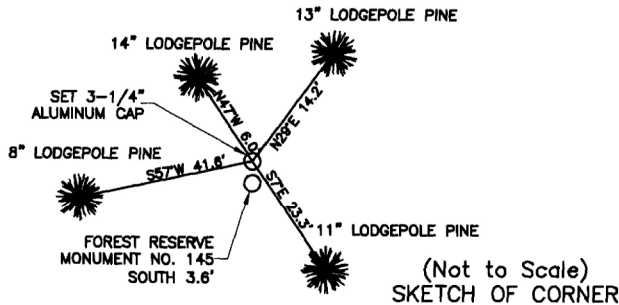
Corner lies on a 2% south facing slope.

Date of Survey: September 2013

Compass declination 14°

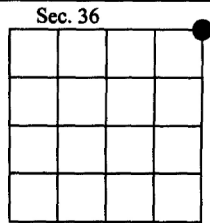


NAD 83 coordinates for this corner:  
 Latitude = 47°06'24.521"N Longitude = 113°10'34.624"W  
 NOTE: These coordinates are to be used as a search tool only.



CERTIFICATION  
 I, Henry Moua  
 certify the information shown herein is true and correct.  
 Signature Ground Party Chief  
 I, Kurt Luebke  
 certify that this Corner Record correctly represents work performed by me or under my direction in compliance with the "Corner Recordation Act" (70-22-101, et seq., M.C.A.)  
 Signature of Surveyor & Seal  
 Date: November 30, 2013 Reg. No. 13237  
 Employer: DJ&A P. C.

Office of County Clerk  
**170566 Fee: \$0.00 Bk Pg**  
 record in **POWELL COUNTY** Filed 12/10/2013 At 11:05 AM  
 was note Diane S. Grey, CLK & Rcdr By *Jenna Brinkley*  
 Return To: **FILING**  
 book No. \_\_\_\_\_  
 \_\_\_\_\_  
 County Official



Cross Index No. V-25 T. 16N R. 13W PMM