

INSTRUCTIONS

1. Original and/or subsequent record used to evaluate the corner position.
2. Description of evidence found, note discrepancies in the record, state method of establishing lost or obliterated corners.
3. Description of monument and accessories set to perpetuate the corner position.
4. Sketch of corner, show all pertinent data which can best be shown in a sketch example, corner marking, topography ties, position of accessories, etc.
5. Certification must be signed and sealed by Land Surveyor registered in the State of Montana.
6. Fill in Cross Index & Section Diagram at bottom of sheet.

CERTIFIED CORNER RECORDATION

Section Corner SECTIONS 7, 12, 13, & 18 T. 16N R. 13 & 14W P.M.M. Missoula & Powell County

ORIGINAL RECORD: (1890 GLO) Set a slatestone 18x11x4 ins., 12 ins. in the ground, for cor. of secs. 7, 12,13, and 18, marked with 2 notches on the N. and 4 notches on the S. edges, from which:

- A black pine, 9 ins. diam. bears N32°30'E., 22 lks dist. mkd. T16N R13W S7 BT
- A black pine, 11 ins. diam. bears S41°E., 15 lks dist. mkd. T16N R13W S18 BT
- A black pine, 8 ins. diam. bears S12°W., 3 lks dist. mkd. T16N R14W S13 BT
- A black pine, 9 ins. diam. bears N22°45'W., 11 lks dist. mkd. T16N R14W S12 BT

SUBSEQUENT RECORD: (1968 BLM) Found a slate stone 16x10x5 ins. firmly set and mkd. 2 grooves on the N. and 4 grooves on the S. faces. At the corner point. Set an iron post, 30 ins. long, 2 1/2 ins. diam., 26 ins. in the ground, with brass cap, from which:

- A spruce, 9 ins. diam. bears N55°E, 27 links dist., mkd. T16N R13W S7 BT
  - A spruce, 12 ins. diam. bears S79°E, 35 links dist., mkd. T16N R13W S18 BT
  - A fir, 8 ins. diam. bears S18 1/2°W, 19 links dist., mkd. T16N R14W S13 BT
  - A fir, 8 ins. diam. bears N64°W, 16 links dist., mkd. T16N R14W S12 BT
- Bury the original stone alongside the iron post.

EVIDENCE FOUND: Found 3 1/4" brass cap marked as shown below, from which:

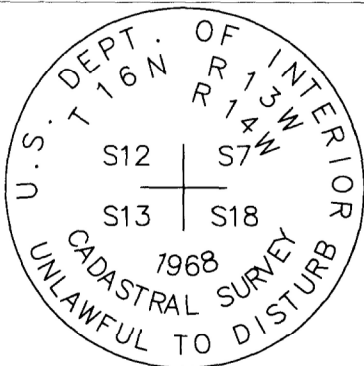
- A 10" spruce bears N55°E, a distance of 18 feet, scribe overgrown
- A 12" stump bears S79°E, a distance of 23.1, scribed "T16N R13W S18 BT"
- A 12" fir bears S18-1/2°W, a distance of 12.6 feet, scribed "T16N R14W S13 BT"
- A 10" fir bears N64°W, a distance of 11 feet, scribed "T16N R14W S12 B T"

PERPETUATION: The monument was left as found, from which establish the following new accessories:

- A 11" fir bears S68°E, a distance of 44.2 feet, scribed "T16N R13W S18 BT"

Set a Steel post with Forest Service Land Survey Monument and property boundary decal west and north of monument, 3 feet distant.

All BT's have BT & LSM signs, snowblazes and red painted rings.

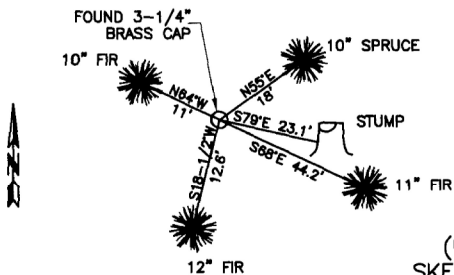


Corner lies on a 40% west facing slope.

Date of Survey: September 2013

Compass declination 14°

NAD 83 coordinates for this corner:  
 Latitude = 47°09'01.402"N Longitude = 113°18'10.045"W  
 NOTE: These coordinates are to be used as a search tool only.



(Not to Scale)  
 SKETCH OF CORNER

CERTIFICATION

I, Henry Moua  
 certify the information shown hereon is true and correct.  
 Signature of Ground Party Chief

I, Kurt Luebke  
 certify that this Corner Record correctly represents work performed by me or under my direction in compliance with the "Corner Recordation Act" (70-22-101, et seq., M.C.A.)  
 Signature of Surveyor & Seal

Date: November 30, 2013 Reg. No. 13237

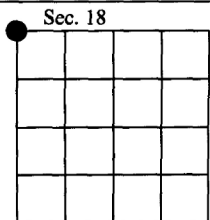
Employer: DJ&A P. C.

Office record # 170560 Fee: \$0.00 Bk Pg          corner         

recorded by POWELL COUNTY Filed 12/10/2013 At 10:35 AM  
 by Diane S. Grey, Clk & Rcdr By [Signature]  
 was not Return To: FILING

book N.          County Official         

Cross Index No. J-25 T. 16N R. 14W PMM  
 Cross Index No. J-1 T. 16N R. 13W PMM



● - corner this sheet