

INSTRUCTIONS

1. Original and/or subsequent record used to evaluate the corner position.
2. Description of evidence found, note discrepancies in the record, state method of establishing lost or obliterated corners.
3. Description of monument and accessories set to perpetuate the corner position.
4. Sketch of corner, show all pertinent data which can best be shown in a sketch example, corner marking, topography ties, position of accessories, etc.
5. Certification must be signed and sealed by Land Surveyor registered in the State of Montana.
6. Fill in Cross Index & Section Diagram at bottom of sheet.

CERTIFIED CORNER RECORDATION

Corner SECTIONS 19, 20, 29 & 30 T. 16N R. 13W P.M.M. Powell County

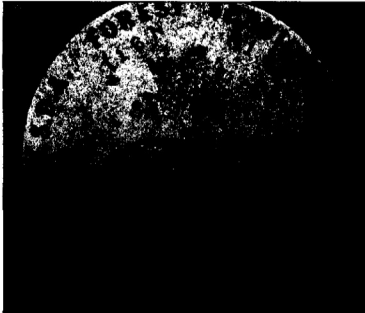
ORIGINAL RECORD: (1898 G.L.O.) Set a sand stone, 18x12x7 ins., 12 ins. in the ground for cor. of secs. 19, 20, 29 & 30 marked with 2 notches on the S. and 5 notches on E. edges, from which:
 A Red Fir, 10 ins. diam., bears N63½°E, 16 lks. dist., marked "T16N R13W S20 B.T."
 A Red Fir, 12 ins. diam., bears S26°E, 26 lks. dist., marked "T16N R13W S29 B.T."
 A Red Fir, 12 ins. diam., bears S67°W, 7 lks. dist., marked "T16N R13W S30 B.T."
 A Red Fir, 11 ins. diam., bears N27°W, 32 lks. dist., marked "T16N R13W S19 B.T."

SUBSEQUENT RECORD: (1976 Stanley J. Skousen Corner Recordation) I find a firmly set 12x7 in. Stone 10 in. above the ground, with 2 notches on the S. edge and 5 notches on the E. edge
 A stump bears N63½°E, 10.5 ft.
 A fir stump bears S26°E, 17.2 ft. blaze healed
 A rotted stump bears S67°W, 4.6 ft. marked T16NR13WS30BT
 Painted stone red except for area of the marks. Created four RM's
 A 6 in larch bears N14°E. 16.0 ft.
 A 6 in pine bears S75°E. 36.6 ft.
 A 6 in larch bears S70-3/4°E. 16.7 ft.
 A 8 in larch bears N49°W. 12.7 ft.

SUBSEQUENT RECORD: (1992 Steve M. Inabnit Corner Recordation) Found Stone as described firmly set in place, from which:
 A 8" Larch bears N49½°W, 13 ft. blaze healed
 A 8" Larch bears N11½°E, 16.9 ft. blaze healed
 A 8" Pine bears S76°E, 36.5 ft. scribing visible
 A 4" Brass Cap (Forest Reserve) bears N74½°E, 3.2 ft.
 Set a 2½" x 30" Al. Mon., buried 26" in the ground and collared with a stone. Original stone buried alongside mon.
 Established new Bearing Tree as follows:
 A Larch bears S70°E, 36.5 ft. marked "T16N R13W S30 B.T." (bearing incorrect)

EVIDENCE FOUND: Found 3¼" aluminum cap marked as shown below, from which:
 A 10" Larch bears N49°W, a distance of 12.8 feet, scribed closed
 A 16" Larch bears S60°W, a distance of 34.5 feet, scribed closed

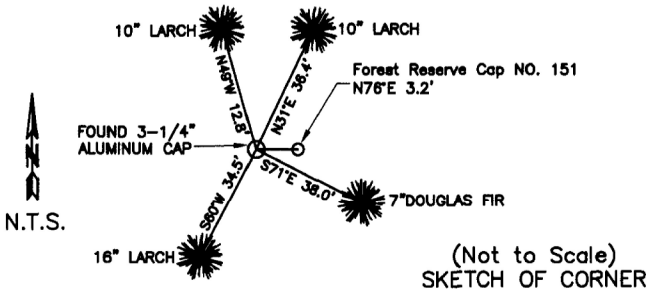
PERPETUATION: Leave the monument in place from which we establish the following new accessories:
 A 10" Larch bears N31°E, a distance of 36.4 feet, scribed " T16N R13W S20 B.T."
 A 7" Douglas Fir bears S71°E, a distance of 38.0 feet, scribed " T16N R13W S29 B.T."
 Set a Steel post with Forest Service Land Survey Monument and Property Boundary decals north and west of monument, 3 feet distant.



All BT's have BT & LSM signs, snowblazes and red painted rings.
 Corner lies on a flat slope.
 Date of Survey: June 2011
 Compass declination 14°



NAD 83 coordinates for this corner:
 Latitude = 47°07'16.022"N Longitude = 113°16'55.810"W
 NOTE: These coordinates are to be used as a search tool only.



CERTIFICATION

I, Henry Moua
 certify the information shown herein is true and correct.
 Signature Ground Party Chief

I, Kurt Luebke
 certify that this Corner Record correctly represents work performed by me or under my direction in compliance with the "Corner Recordation Act" (70-22-101, et seq., M.C.A.)
 Signature of Surveyor & Seal

Date: January 22, 2013 Reg. No. 13237
 Employer: DJ&A P. C.

169166 Fee: \$0.00 Bk Pg
 POWELL COUNTY Filed 1/23/2013 At 10:15 AM
 Diane S. Grey, Clk & Rcdr By Diane S. Grey
 Return To: FILING

Sec. 29

• - corner this sheet

Cross Index No. R-5 T. 16N R. 13W PMM