

INSTRUCTIONS

1. Original and/or subsequent record used to evaluate the corner position.
2. Description of evidence found, note discrepancies in the record, state method of establishing lost or obliterated corners.
3. Description of monument and accessories set to perpetuate the corner position.
4. Sketch of corner, show all pertinent data which can best be shown in a sketch example, corner marking, topography ties, position of accessories, etc.
5. Certification must be signed and sealed by Land Surveyor registered in the State of Montana.
6. Fill in Cross Index & Section Diagram at bottom of sheet.

CERTIFIED CORNER RECORDATION

Corner Sections 3, 4, 33 & 34 T. 15 & 16 N. R. 13 W. P.M.M. Powell County

ORIGINAL RECORD: (U.S. Deputy Surveyor Geo W Travis, contract No. 56, June 16, 1873)  
 Set a sandstone 16"x 11"x 3", 10" in ground, marked with 3 notches on the E and 6 notches on the S edges, from which:  
 A Fir, 10" diam, bears N48°E, 48 links (31.7') marked "R13W. T16N. S. 34 BT"  
 A Pine, 9" diam, bears N18°W, 5 links (3.3') marked "S. 33 BT"  
 A Fir, 9" diam, bears S50°W, 42 links (27.7') marked "T15N. S. 4 BT"  
 A Pine, 10" diam, bears S24°E, 15 links (9.9') marked "S. 3 BT"

SUBSEQUENT RECORD: None

EVIDENCE FOUND: Found original sandstone, 16"x 11"x 3", laying on the ground out of position, marked with 3 notches on the E and 6 notches on the S edges. Found evidence of all 4 BT's in the form of stumps and fallen rotted trees at the stated bearings and distance.

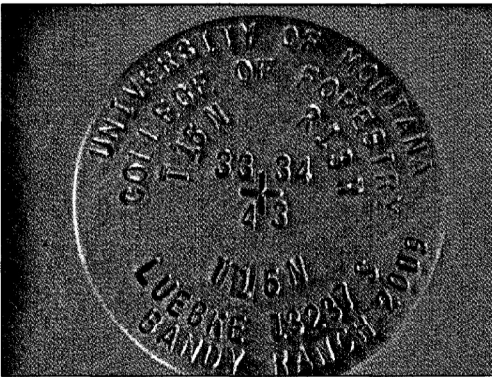
PERPETUATION: Reestablished the original position using the found evidence to locate the corner position. Set a 1"x 40" rebar, 36" in the ground with a 3/4" aluminum cap marked as shown below and buried the original stone along side. Established new bearing trees:  
 A 7" Ponderosa Pine bears N40°W, 44.5 feet, Scribed "RM"  
 A 14" Douglas Fir bears N53°E, 34.7 feet, Scribed "RM"  
 A 10" Douglas Fir bears S36°W, 32.3 feet, Scribed "RM"

Affixed BT & ATTN. signs, snow blazed and painted red rings on BTs, rock ringed corner.

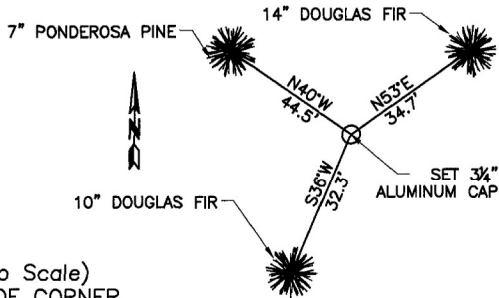
Corner is on an east facing 45% slope, 60' west of a ravine and 20' east of a n/s ridge top.

Date of Survey: October, 2009.

Magnetic Declination = 14.15°



NAD 83 coordinates for this corner:  
 Latitude = 47°05'32.1"N Longitude = 113°14'23.4"W  
 NOTE: These coordinates are to be used as a search tool only.



CERTIFICATION  
 I, Gary Little  
 certify the information shown herein is true and correct.  
*Gary Little*  
 Signature Ground Party Chief  
 I, Kurt A. Luebke  
 certify that this Corner Record correctly represents work performed by me or under my direction in compliance with the "Corner Recordation Act" (70-22-101 et seq., M.C.A.)  
*Kurt Luebke*  
 Signature of Surveyor & Seal  
 Date: 1-5-2010 Reg. No. 13237 S  
 Employer: DJ&A P. C.

164555 Fee: \$0.00 Bk Pg  
 POWELL COUNTY Recorded 1/5/2010 At 10:10 AM  
 Diane S. Grey, Clk & Rcdr By *Jenna Beckels*  
 Return To: FILING

Sec. 34


● - corner this sheet

Cross Index No. Z-13 T. 16 N. R. 13 W. PMM  
 Cross Index No. A-13 T. 15 N. R. 13 W. PMM