

INSTRUCTIONS

1. Original and/or subsequent record used to evaluate the corner position.
2. Description of evidence found, note discrepancies in the record, state method of establishing lost or obliterated corners.
3. Description of monument and accessories set to perpetuate the corner position.
4. Sketch of corner, show all pertinent data which can best be shown in a sketch example, corner marking, topography ties, position of accessories, etc.
5. Certification must be signed and sealed by Land Surveyor registered in the State of Montana.
6. Fill in Cross Index & Section Diagram at bottom of sheet.

CERTIFIED CORNER RECORDATION

1/4 Corner SECTION 27 & 28 T. 16N R. 13W P.M.M. Powell County

ORIGINAL RECORD: (1898 G.L.O.) Set a sand stone, 20x10x6 ins., 15 ins. in the ground, for 1/4 sec. cor., marked 1/4 on W face, from which:
 A Tamarac, 5 ins. diam., bears S64°W 15 lks. dist., marked "1/4 S. B.T."
 A Tamarac, 6 ins. diam., bears S81-1/2°E 25 lks. dist., marked "1/4 S. B.T."

SUBSEQUENT RECORD: None

EVIDENCE FOUND: Found stone marked with "1/4" on the west side, from which:
 A 12" Larch bears S82°E, a distance of 16.5 feet, scribe overgrown

PERPETUATION: In place of the stone, set a 2 1/2" diameter x 30" long aluminum pipe monument with 3/4" aluminum cap marked as shown below and bury the stone alongside, from which establish the following new accessories:
 A 10" Larch bears S54°W, a distance of 8.8 feet, scribed "1/4 S28 BT "

Set a Steel post with Forest Service Land Survey Monument and Property Boundary decals north and east of monument, 3 feet distant.

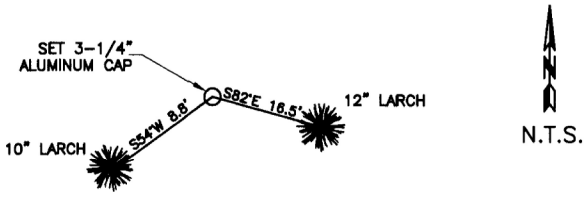
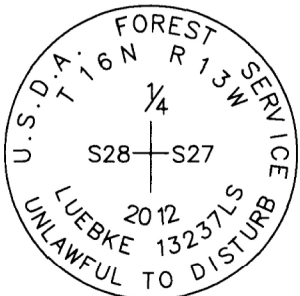
All BT's have BT & LSM signs, snowblazes and red painted rings.

Corner lies on a flat slope, approximately 12 feet west of a north-south fenceline.

Date of Survey: June 2011

Compass declination 14°

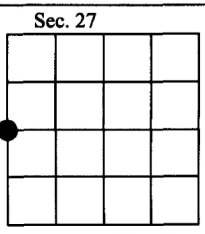
NAD 83 coordinates for this corner:
 Latitude = 47°06'50.289"N Longitude = 113°14'23.527"W
 NOTE: These coordinates are to be used as a search tool only.



(Not to Scale)
 SKETCH OF CORNER

CERTIFICATION
 I, Henry Moua
 certify the information shown herein is true and correct.
 Signature Ground Party Chief
 I, Kurt Luebke
 certify that this Corner Record correctly represents work performed by me or under my direction in compliance with the "Corner Recordation Act" (70-22-101, 1st Sec., M.C.A.)
 Signature of Surveyor & Seal
 Date: January 22, 2013 Reg. No. 13237
 Employer: DJ&A P. C.

169167 Fee: \$0.00 Bk Pg
 POWELL COUNTY Filed 1/23/2013 At 10:20 AM
 Diane S. Grey, Clk & Rcdr By [Signature]
 Return To: FILING



• - corner this sheet

Cross Index No. T-13 T. 16N R. 13W PMM