

INSTRUCTIONS

1. Original and/or subsequent record used to evaluate the corner position.
2. Description of evidence found, note discrepancies in the record, state method of establishing lost or obliterated corners.
3. Description of monument and accessories set to perpetuate the corner position.
4. Sketch of corner, show all pertinent data which can best be shown in a sketch example, corner marking, topography ties, position of accessories, etc.
5. Certification must be signed and sealed by Land Surveyor registered in the State of Montana.
6. Fill in Cross Index & Section Diagram at bottom of sheet.

CERTIFIED CORNER RECORDATION

1/4 Corner SECTION 26 & 27 T. 16N R. 13W P.M.M. Powell County

ORIGINAL RECORD: (1898 G.L.O.) Set a sand stone, 18x14x5 ins., 12 ins. in the ground, for 1/4 sec. cor., marked 1/4 on W face, from which:

A Pine, 6 ins. diam., bears N32°E, 15 lks. dist., marked "1/4 S. B.T."

SUBSEQUENT RECORD: (2012 Kurt A. Luebke) Found stone, 8x5x7 ins., marked with "1/4" on the west side. In place of the stone, set a 2 1/2" diameter x 30" long aluminum pipe monument with 3 1/4" aluminum cap marked as shown below and bury the stone alongside, from which establish the following new accessories:

- A 9" lodge pole bears S2°E, a distance of 18.5 feet, scribed "1/4 S26 BT "
- A 10" lodge pole bears N54°W, a distance of 19.9 feet, scribed "1/4 S27 BT "

Set a Steel post with Forest Service Land Survey Monument and Property Boundary decals west of monument, 2 feet distant.

EVIDENCE FOUND: Found 3 1/4" aluminum cap marked as shown below, from which:

- A 10" dead lodgepole pine bears S2°E, a distance of 18.5 feet, scribed "1/4 S26 BT"
- A 11" lodgepole pine bears N54°W, a distance of 19.9 feet, scribed "1/4 S27 BT"

PERPETUATION: The monument was left as found, from which establish the following new accessories:

- A 8" lodgepole pine bears S12°W, a distance of 23.9 feet, scribed "1/4 S27 BT"

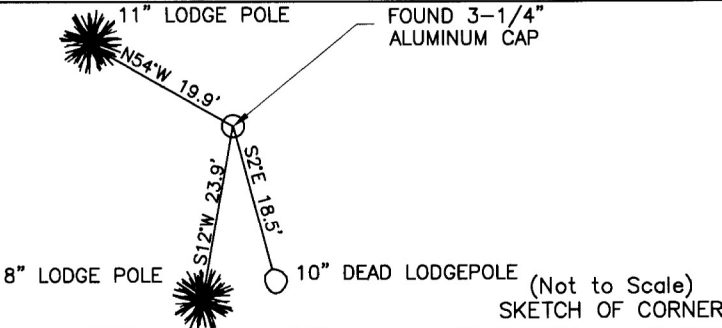
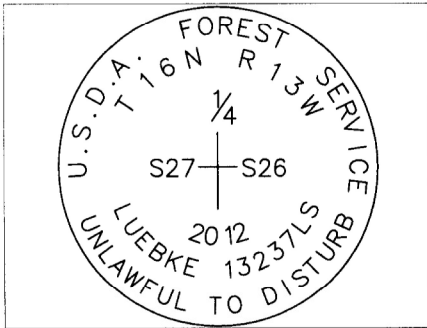
All BT's have BT & LSM signs, snowblazes and red painted rings.

Corner lies on a 5% easterly facing slope, ±30 south of a road.

Date of Survey: September 2013

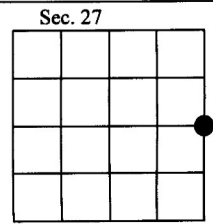
Compass declination 14°

NAD 83 coordinates for this corner:
Latitude = 47°06'50.121"N Longitude = 113°13'07.154"W
NOTE: These coordinates are to be used as a search tool only.



CERTIFICATION
I, Henry Moua
certify the information shown herein is true and correct.
Signature Ground Party Chief
I, Kurt Luebke
certify that this Corner Record correctly represents work performed by me or under my direction in compliance with the "Corner Recordation Act" (70-22-101, et seq., M.C.A.)
Signature of Surveyor & Seal
Date: November 30, 2013 Reg. No. 13237
Employer: DJ&A P. C.

Office of Clerk and Recorder
170561 Fee: \$0.00 Bk Pg
recorded Powell County Filed 12/10/2013 At 10:40 AM
was not Diane S. Grey, Clk & Rcdr By Jane B. Beckley
Return To: FILING
book N
County Official



• - corner this sheet

INSTRUCTIONS

1. Original and/or subsequent record used to evaluate the corner position.
2. Description of evidence found, note discrepancies in the record, state method of establishing lost or obliterated corners.
3. Description of monument and accessories set to perpetuate the corner position.
4. Sketch of corner, show all pertinent data which can best be shown in a sketch example, corner marking, topography ties, position of accessories, etc.
5. Certification must be signed and sealed by Land Surveyor registered in the State of Montana.
6. Fill in Cross Index & Section Diagram at bottom of sheet.

CERTIFIED CORNER RECORDATION

1/4 Corner SECTION 26 & 27 T. 16N R. 13W P.M.M. Powell County

ORIGINAL RECORD: (1898 G.L.O.) Set a sand stone, 18x14x5 ins., 12 ins. in the ground, for 1/4 sec. cor., marked 1/4 on W face, from which:

A Pine, 6 ins. diam., bears N32°E, 15 lks. dist., marked "1/4 S. B.T."

SUBSEQUENT RECORD: None

EVIDENCE FOUND: Found stone, 8x5x7 ins., marked with "1/4" on the west side.

PERPETUATION: In place of the stone, set a 2 1/2" diameter x 30" long aluminum pipe monument with 3/4" aluminum cap marked as shown below and bury the stone alongside, from which establish the following new accessories:

- A 9" Lodge Pole bears S2°E, a distance of 18.5 feet, scribed "1/4 S26 BT "
- A 10" Lodge Pole bears N54°W, a distance of 19.9 feet, scribed "1/4 S27 BT "

Set a Steel post with Forest Service Land Survey Monument and Property Boundary decals west of monument, 2 feet distant.

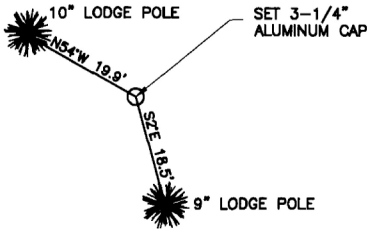
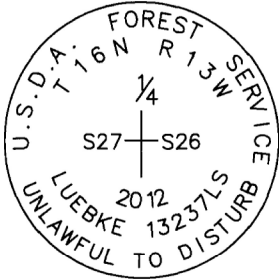
All BT's have BT & LSM signs, snowblazes and red painted rings.

Corner lies on a 5% easterly facing slope, ±30 south of a road.

Date of Survey: June 2011

Compass declination 14°

NAD 83 coordinates for this corner:
 Latitude = 47°06'50.121"N Longitude = 113°13'07.154"W
 NOTE: These coordinates are to be used as a search tool only.



(Not to Scale)
 SKETCH OF CORNER

CERTIFICATION

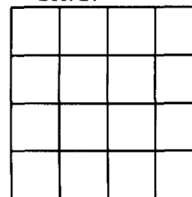
I, Henry Moua
 certify the information shown herein is true and correct.
 Signature Ground Party Chief

I, Kurt Luebke
 certify that this Corner Record correctly represents work performed by me or under my direction in compliance with the "Corner Recordation Act" (70-22-101, et seq., M.C.A.)
 Signature of Surveyor & Seal

Date: January 22, 2013 Reg. No. 13237

Employer: DJ&A P. C.

Sec. 27



• - corner this sheet

169162 Fee: \$0.00 Bk Pg

POWELL COUNTY Filed 1/23/2013 At 9:55 AM
 Diane S. Grey, Clk & Rcdr By [Signature]
 Return To: FILING

Cross Index No. T-17 T. 16N R. 13W PMM