

INSTRUCTIONS

1. Original and/or subsequent record used to evaluate the corner position.
2. Description of evidence found, note discrepancies in the record, state method of establishing lost or obliterated corners.
3. Description of monument and accessories set to perpetuate the corner position.
4. Sketch of corner, show all pertinent data which can best be shown in a sketch example, corner marking, topography ties, position of accessories, etc.
5. Certification must be signed and sealed by Land Surveyor registered in the State of Montana.
6. Fill in Cross Index & Section Diagram at bottom of sheet.

CERTIFIED CORNER RECORDATION

Section Corner SECTIONS 25, 26, 35, & 36 T. 16N R. 13W P.M.M. Powell County

ORIGINAL RECORD: (1898 GLO ) Set a sandstone 22x12x6 ins., 16 ins. in the ground, for cor. of secs. 25, 26, 35, and 36, marked with 1 notch on the S. and 1 notches on the E. faces, from which:  
 A spruce, 9 ins. diam. bears N62-1/2°E., 39 lks dist. mkd. T16N R13W S25 BT  
 A quaking aspen, 8 ins. diam. bears S7-1/4°E., 56 lks dist. mkd. T16N R13W S36 BT  
 A spruce, 7 ins. diam. bears N86°W., 38 lks dist. mkd. T16N R13W S26 BT  
 A quaking aspen, 10 ins. diam. bears S23-1/2°W., 84 lks dist. mkd. T16N R13W S35 BT

SUBSEQUENT RECORD: (None found in Powell County Court House)

(2006 Ken E. Jenkins 9330 LS from State DNR) Found a 16"x12"x6" sandstone loosely set and clearly marked with 1 notch on the south face, from which:  
 A spruce snag bears N85°W, 25.0 ft, with partially visible scribing in a low heel blaze.  
 A 36" aspen bears S6°W, 37.6 ft, with low heel blaze.  
 At the position of the found original corner stone we set a 5/8" x 30" rebar with a 3-1/4" aluminum cap, and established new reference monuments as follows:  
 A 18" spruce bears S35°E, 40.4 ft, blazed and scribed RM2.  
 A 17" spruce bears N63°E, 50.0 ft, blazed and scribed RM1.  
 We buried the original stone 1.0 ft south of the monument.

EVIDENCE FOUND: Found 3 1/4" aluminum cap marked as shown below, from which:  
 A 17" spruce bears N63°E, a distance of 50.0 feet, scribed "RM"  
 A 18" spruce bears S30°E, a distance of 40.4 feet, scribed "RM"  
 A 35" aspen bears S7°E, a distance of 36.7 feet, scribing overgrown

PERPETUATION: The monument was left as found, from which establish the following new accessories:  
 A 16" spruce bears S78°W, a distance of 59.0 feet, scribed "T16N R13W S36 BT"  
 A 20" aspen bears N41°W, a distance of 15.0 feet, scribed "T16N R13W S26 BT"

Set a Steel post with Forest Service Land Survey Monument and property boundary decal west and east of monument, 3 feet distant.

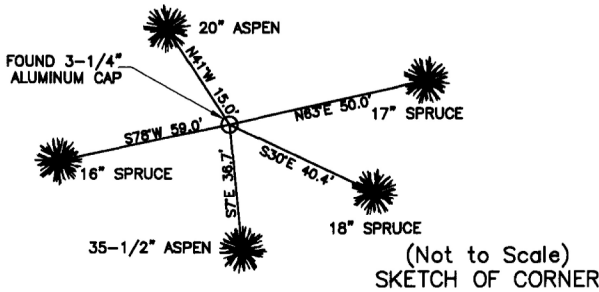
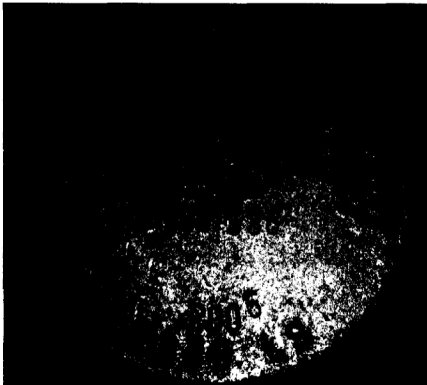
All BT's have BT & LSM signs, snowblazes and red painted rings.

Corner lies on a 2% south facing slope.

Date of Survey: September 2013

Compass declination 14°

NAD 83 coordinates for this corner:  
 Latitude = 47°06'24.466"N Longitude = 113°11'51.111"W  
 NOTE: These coordinates are to be used as a search tool only.



CERTIFICATION

I, Henry Moua  
 certify the information shown herein is true and correct.  
 Signature Ground Party Chief

I, Kurt Luebke  
 certify that this Corner Record correctly represents work performed by me or under my direction in compliance with the "Corner Recordation Act" (70-22,101, et seq., M.C.A.)  
 Signature of Surveyor & Seal

Date: November 30, 2013 Reg. No. 13237

Employer: DJ&A P. C.

Office of Clerk and Recorder 170564 Fee: \$0.00 Bk Pg rner

recorded Powell County Filed 12/10/2013 At 10:55 AM  
 was not Diane S. Grey, Clk & Rcdr By [Signature]  
 Return To: FILING

book No. \_\_\_\_\_ County Official

Sec. 36


• - corner this sheet

Cross Index No. V-21 T. 16N R. 13W PMM