

INSTRUCTIONS

1. Original and/or subsequent record used to evaluate the corner position.
2. Description of evidence found, note discrepancies in the record, state method of establishing lost or obliterated corners.
3. Description of monument and accessories set to perpetuate the corner position.
4. Sketch of corner, show all pertinent data which can best be shown in a sketch example, corner marking, topography ties, position of accessories, etc.
5. Certification must be signed and sealed by Land Surveyor registered in the State of Montana.
6. Fill in Cross Index & Section Diagram at bottom of sheet.

CERTIFIED CORNER RECORDATION

AP Standard 1/4 Corner SECTION 35 T. 17N R. 14W P.M.M. Missoula & Powell County

**ORIGINAL RECORD:** (1890 G.L.O.) Set a Slate-Stone, 14x9x5 ins., 10 ins. in the ground, for standard 1/4 sec. cor., marked S.C. 1/4 on N. face with 2 notches on the E., and 4 notches on W. faces, from which:  
 A Fir, 15 ins. diam., bears S35°E, 9 lks. dist. marked, " 1/4 S BT"  
 A Fir, 14 ins. diam., bears N50°W, 36 lks. dist. marked, " 1/4 S BT"

**SUBSEQUENT RECORD:** (1917 G.L.O.) At 40.00 chains-Set a granite stone for standard 1/4 sec. cor. At 41.31 chains-the old stand. 1/4 sec. cor., which is a slate stone, 2x5x6 ins. above ground, firmly set, marked. I efface the marks on stone and bearing trees and I mark AP on N. face of stone and bearing trees and I mark AP on N. face of stone and AP BT on bearing trees.

**EVIDENCE FOUND:** Found fractured stone with largest piece being 3" in size marked with 1/4 SC, from which:  
 A 20" Douglas Fir bears S45°E, a distance of 5.2 feet, scribe overgrown  
 A 23" Douglas Fir stump bears N56°W, a distance of 23.8, scribed "S"

**PERPETUATION:** In place of the stone, set a 2 1/2" diameter x 30" long aluminum pipe monument with 3/4" aluminum cap marked as shown below and bury the stone alongside, from which establish the following new accessories:

A 10" Alpine Fir bears N20°E, a distance of 20.7 feet, scribed "AP S35 BT "

Set a Steel post with Forest Service Land Survey Monument decal east of monument, 3.0 feet distant.

All BT's have BT & LSM signs, snowblazes and red painted rings.

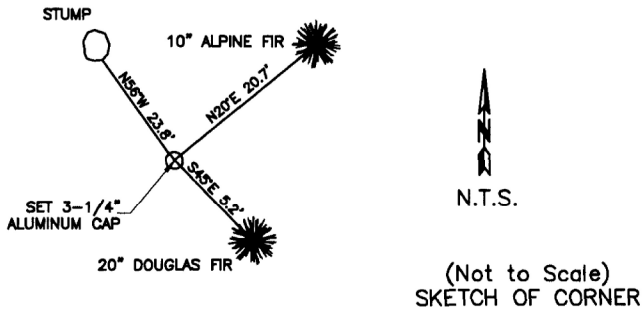
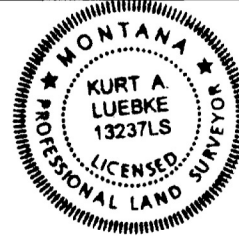
Corner lies on a 35% easterly facing slope.

± 200' from end of logging spur

Date of Survey: June 2011

Compass declination 14°

NAD 83 coordinates for this corner:  
 Latitude = 47°10'45.592"N Longitude = 113°20'45.964"W  
 NOTE: These coordinates are to be used as a search tool only.



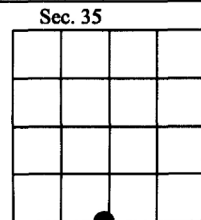
CERTIFICATION

I, Henry Moua  
 certify the information shown herein is true and correct.  
 Signature Ground Party Chief

I, Kurt Luebke  
 certify that this Corner Record correctly represents work performed by me or under my direction in compliance with the "Corner Recordation Act" (70-22-101, et seq. M.C.A.)  
 Signature of Surveyor & Seal

Date: January 22, 2013 Reg. No. 13237  
 Employer: DJ&A P. C.

169154 Fee: \$0.00 Bk Pg  
 POWELL COUNTY Filed 1/23/2013 At 9:15 AM  
 Diane S. Grey, CLK & Rcdr By [Signature]  
 Return To: FILING



• - corner this sheet

Cross Index No. Z-19 T. 17N R. 14W PMM