

INSTRUCTIONS

1. Original and/or subsequent record used to evaluate the corner position.
2. Description of evidence found, note discrepancies in the record, state method of establishing lost or obliterated corners.
3. Description of monument and accessories set to perpetuate the corner position.
4. Sketch of corner, show all pertinent data which can best be shown in a sketch example, corner marking, topography ties, position of accessories, etc.
5. Certification must be signed and sealed by Land Surveyor registered in the State of Montana.
6. Fill in Cross Index & Section Diagram at bottom of sheet.

CERTIFIED CORNER RECORDATION

Standard 1/4 Corner SECTION 36 T. 17N R. 14W P.M.M. Missoula & Powell County

ORIGINAL RECORD: (1917 G.L.O.) Set Fir post 3 feet x 4 ins. square, 24" in ground, marked SC 1/4 S 36 on N. face, from which:
 A Balsam, 10 ins. diam., bears N43°30'E, 26 lks. dist., marked SC1/4 S36 BT
 A Balsam, 10 ins. diam., bears N20°W, 24 lks. dist., marked SC1/4 S36 BT

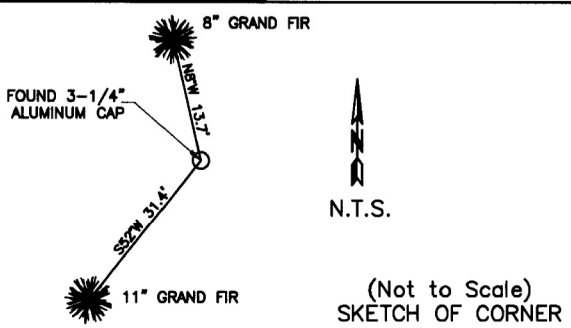
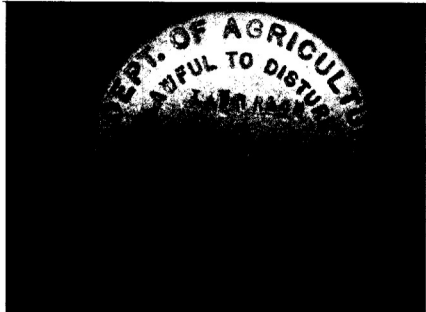
SUBSEQUENT RECORD: (1985 Samuel R. Smith Corner Recordation) Found 12" stump with scribing facing SE reading " SC1/4 S36 BT". Set Standard Aluminum Monument from stump, marked as shown, from which:
 New B.T.'s established:
 15" Subalpine Fir inscribed "SC 1/4 BT" bears S15°E 16.4 feet.
 6" Subalpine Fir inscribed "SC 1/4 BT" bears N28°E 23.6 feet.

EVIDENCE FOUND: Found 3 1/4" aluminum cap marked as shown below. From which:
 Tree root wad with BT tag bears N28°E, a distance of 23.6 feet
 Tree root wad with BT tag bears S15°E, a distance of 16.4 feet
 Tree stump with scribe bears N20°W, a distance of 15.8 feet

PERPETUATION: Leave the monument in place from which we establish the following new accessories:
 A 11" Grand Fir bears S52°W, a distance of 31.4 feet, scribed "SC 1/4 S2 BT "
 A 8" Grand Fir bears N8°W, a distance of 13.7 feet, scribed "SC 1/4 S36 BT "

Set a Steel post with Forest Service Land Survey Monument decal north of monument, 2.0 feet distant.
 All BT's have BT & LSM signs, snowblazes and red painted rings.
 Corner lies on a 50% easterly facing slope.
 Date of Survey: June 2011
 Compass declination 14°

NAD 83 coordinates for this corner:
 Latitude = 47°10'45.738"N Longitude = 113°19'28.156"W
 NOTE: These coordinates are to be used as a search tool only.



CERTIFICATION

I, Henry Moua
 certify the information shown herein is true and correct.
 Signature Ground Party Chief

I, Kurt Luebke
 certify that this Corner Record correctly represents work performed by me or under my direction in compliance with the "Corner Recordation Act" (70-22-101, et seq. M.C.A.)
 Signature of Surveyor & Seal

Date: January 22, 2013 Reg. No. 13237
 Employer: DJ&A P. C.

169158 Fee: \$0.00 Bk Pg
 POWELL COUNTY Filed 1/23/2013 At 9:35 AM
 Diane S. Grey, Clk & Rcdr By Diane S. Grey
 Return To: FILING

