

Missoula County Control Point Datasheet

Monument Description: Axle in Casing w/ Punch Mark

Project Name: Seeley Lake

Station Description: 1/4 Corner

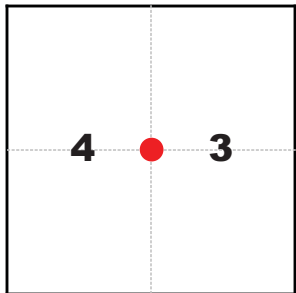
Date Visited: Aug 5, 2010

Monument Stability: B GPS Visibility: C-

Observer: SEN - CLG

Quad. Name: Seeley Lake East

T. 16 N. R. 15 W.



NAD 83 (2007) Lat/Long Position

47°10'18.573"N

113°29'39.261"W

NAVD 88 Elevation: 4001.5 sft.

Notes:

Photo of Monument



Photo Looking North



Photo Looking South



To Reach: 2wd access.



Map of Area

- INSTRUCTIONS**
1. Original and/or subsequent record used to evaluate the corner position.
 2. Description of monument and accessories set to perpetuate the corner position.
 3. Description of monument and accessories set to perpetuate the corner position.
 4. Sketch of corner, show all pertinent data which can best be shown in a sketch example, corner marking, accessories, etc.
 5. File in Cross Index & Section Diagram at bottom of sheet.
 6. File in Cross Index & Section Diagram at bottom of sheet.

CERTIFIED CORNER RECORDATION

1/4 Corner Common to Sections 3 and 4
T. 16 N. R. 15 W. P. M., M. Missoula County, Montana

RECORD #1: (October 20, 1890) G. L. O. survey by Angus McGillivray
"Set a post, 4 ft. long, 4 ins. square, 30 ins. in the ground, for 1/4 sec. cor., marked 1/4 S. on W. face; from which
A fir, 16 ins. diam., bears S 67°40' E., 16 lks. dist., marked 1/4 S. B.T.
A fir, 13 ins. diam., bears N 85° W., 25 lks. dist., marked 1/4 S. B. T."

RECORD #2: (October 6, 1981) Corner Recordation Form #497087, by Missoula County
"A 5 inch diameter car axle marked 1/4 in center of the top of the axle, as shown below, for the 1/4 corner of sections 3 & 4, 14 inches deep from which:
A 20 ins. D.B.H. Lodgepole Pine, bears N57°W, 20.9 feet scribed S4 BT 1/4 SC with two boat spikes in face.
Note: The second B.T. was probably set by Art Stanley, as well as the found axle marked 1/4."

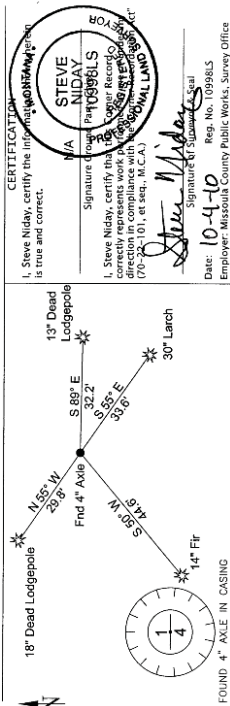
Left car axle in found position and placed an 8 inch x 12 inch well casing over it with cover for access from which:
A 12 ins. D.B.H. Lodgepole bears S09°E, 32.1 feet scribed R.M., with Missoula County yellow location tag affixed.
A 20 ins. D.B.H. Lodgepole bears N57°W, 20.9 feet scribed S 4 BT 1/4 SC with two boat spikes in face.
Missoula County yellow location tag affixed."

FOUND: (August 5, 2010) A 4 ins. diam. axle, 9 ins. below the gravel surface of C Street, in an 8 ins. diam. well casing. From which:
A standing dead Lodgepole Pine, 13 ins. diam., bears S 89° E, 32.2 feet. (REC #2 32.1 feet)
A Larch, 30 ins. diam., bears S 55° E, 33.6 feet, with healed over scar 2 feet from base, facing the corner, no record of this BT has been found.
A standing dead Lodgepole Pine, 18 ins. diam., bears N 55° W, 29.8 feet. (REC #2 N 57° W, 20.9 feet)

SET: Left the found car axle in place, established the following new bearing tree:
A Douglas Fir, 14 ins. diam., bears S 50° W, 44.6 feet, scribed RM.
This corner falls approximately 140 feet north of the intersection of Riverside Drive and C Street, on the west edge of C Street.

NAD 83 (2007) Lat. Lon. NAD 83 (2007) SPC Int. Ft.
47°10'18.5726"N 1090494.50 N
113°29'39.2611"W 976060.80 E
NAVD88 elevation 4001.5 sft Missoula Co. GPS #5863

Positional information determined by static GPS observations, with ties to MTUM, SEEL, and MSOL, using GEOID 2009 for elevation.



CERTIFICATION
I, Steve Niday, certify the information herein is true and correct.
Signature of Surveyor
Steve Niday
Date: 10-4-10
Emp. No. 10396LS
Employer: Missoula County Public Works, Survey Office

201010158 B: 866 P.: 1251 Pages: 1
10/04/2010 10:04:13 AM Corner Recordation
Steve Niday, Missoula County Clerk & Recorder

Section 4-3
corner this sheet

Cross Index No. C-13 T. 16 N., R. 15 W. P. M., M.