

Missoula County Control Point Datasheet

Monument Description: 3-1/4" Aluminum Cap 10998S

Project Name: Seeley Lake

Station Description: Section Corner

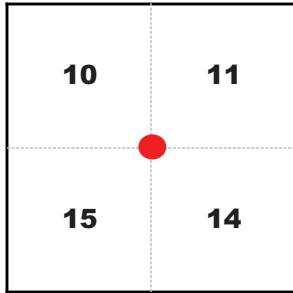
Date Visited: Aug 16, 2010

Monument Stability: B GPS Visibility: A+

Observer: SEN - CLG

Quad. Name: Seeley Lake East

T. 16 N. R. 15 W.



NAD 83 (2007) Lat/Long Position

47°09'00.215"N

113°28'22.664"W

NAVD 88 Elevation: 3978.1 sft.

Notes:

Photo of Monument



Photo Looking North



Photo Looking South



To Reach: 2wd access with permission through private field.



Map of Area

- INSTRUCTIONS**
1. Original and/or subsequent record used to evaluate the corner position.
 2. Description of monument and accessories set to perpetuate the corner position.
 3. Sketch of corner, show all pertinent data which can best be shown in a sketch example, corner marking, accessories, etc.
 4. Fill in Cross Index & Section Diagram at bottom of sheet.
 5. Fill in Cross Index & Section Diagram at bottom of sheet.
 6. Fill in Cross Index & Section Diagram at bottom of sheet.

CERTIFIED CORNER RECORDATION

Corner Common to Sections 10, 11, 14 and 15
T. 16 N. R. 15 W. P.M., M. Missoula County, Montana

RECORD #1: (October 16, 1890) G. L. O. survey by Angus McGillivray "Set a sandstone, 18 x 8 x 4 ins., 12 ins. in the ground, for cor. to secs. 10, 11, 14 and 15, marked with 4 notches on S. and 2 notches on E. edges; dug pits 24 x 24 x 12 ins., in each sec., 5 1/2 ft. dist., and raised a mound of earth, 2 ft. high, 4 1/2 ft. base, alongside."

RECORD #2: (December, 1974) Corner Recordation Form #357961, by Richard A. Ainsworth "WE FIND: No evidence of corner. Corner falls in cultivated field. WE ESTABLISH this corner by 1-1/2" aluminum cap on 5/8" Rebar at a double proportioned position with surrounding corners. TO PERPETUATE this corner we could find no bearing object in field."

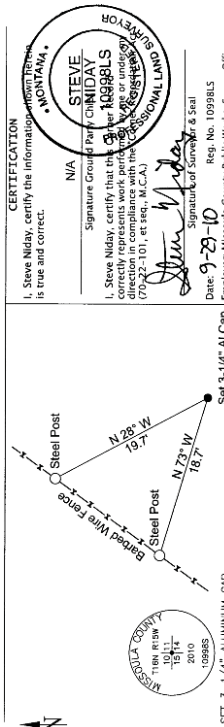
RECORD #3: (December, 1989) Corner Recordation Form #9002365, by R. A. Ainsworth "FOUND - 1989. We find a 5/8" rebar w/ 1 1/2" aluminum cap (stamped as noted below), 0.1" above surface of pasture, + 20 ft. East of a fence line running Northeasterly - Southwesterly. We accept this monument as the best evidence of this corner position. From which:

- * A steel post w/ standard MDOH decal bears N:24°W., 19.6 feet. (post is in fence line)
 - * A steel post w/ standard MDOH decal bears N:71°W., 18.8 feet. (post is in fence line)
- There are no other bearing objects within limits of this corner."

FOUND: (August 16, 2010) A 1-1/2" aluminum cap, marked 2923S, on a bent 5/8" rebar, in a plowed field.

SET: A 5/8" x 24" rebar, with a 3-1/4" aluminum cap, marked as shown, in the position of the bent rebar, 1 1/2 feet below the ground surface. From which:
A steel post with MDOH decal bears N 28° W, 19.7 feet, (REC #3 N 24° W, 19.6 feet).
A steel post with MDOH decal bears N 73° W, 18.7 feet, (REC #3 N 71° W, 18.8 feet).

NAD 83 (2007) Lat. Lon. NAD 83 (2007) SPC Intl. Ft.
47°09'00.2154"N 1082301.63 N
113°28'22.6637"W 980940.65 E
NAVD88 elevation 3978.1 sft Missoula Co. GPS #5871



CERTIFICATION
I, Steve Niday, certify the information shown herein is true and correct.
Signature of Steve Niday
Date: 9-29-10
Reg. No. 10998LS
Employer: Missoula County Public Works, Survey Office

Section	10	11
	15	14

201019165
E: 866 P. 1252
10/04/2010 10:45
Missoula County Clerk & Recorder
Vickie N. Zeier

• corner this sheet
Cross Index No. J-17 T. 16 N., R. 15 W. P.M., M.