

Missoula County Control Point Datasheet

Monument Description: 3-1/4" Aluminum Cap 2923S

Project Name: ALL

Station Description: Section Corner

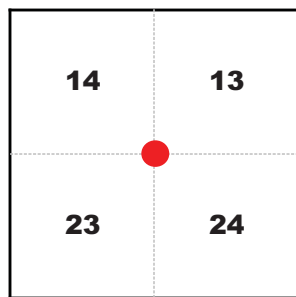
Date Visited: Aug 16, 2010

Monument Stability: C GPS Visibility: B-

Observer: SEN - CLG

Quad. Name: Seeley Lake East

T. 16 N. R. 15 W.



NAD 83 (2007) Lat/Long Position

47°08'08.303"N

113°27'05.255"W

NAVD 88 Elevation: 3976.7 sft.

Notes:

Photo of Monument



Photo Looking South

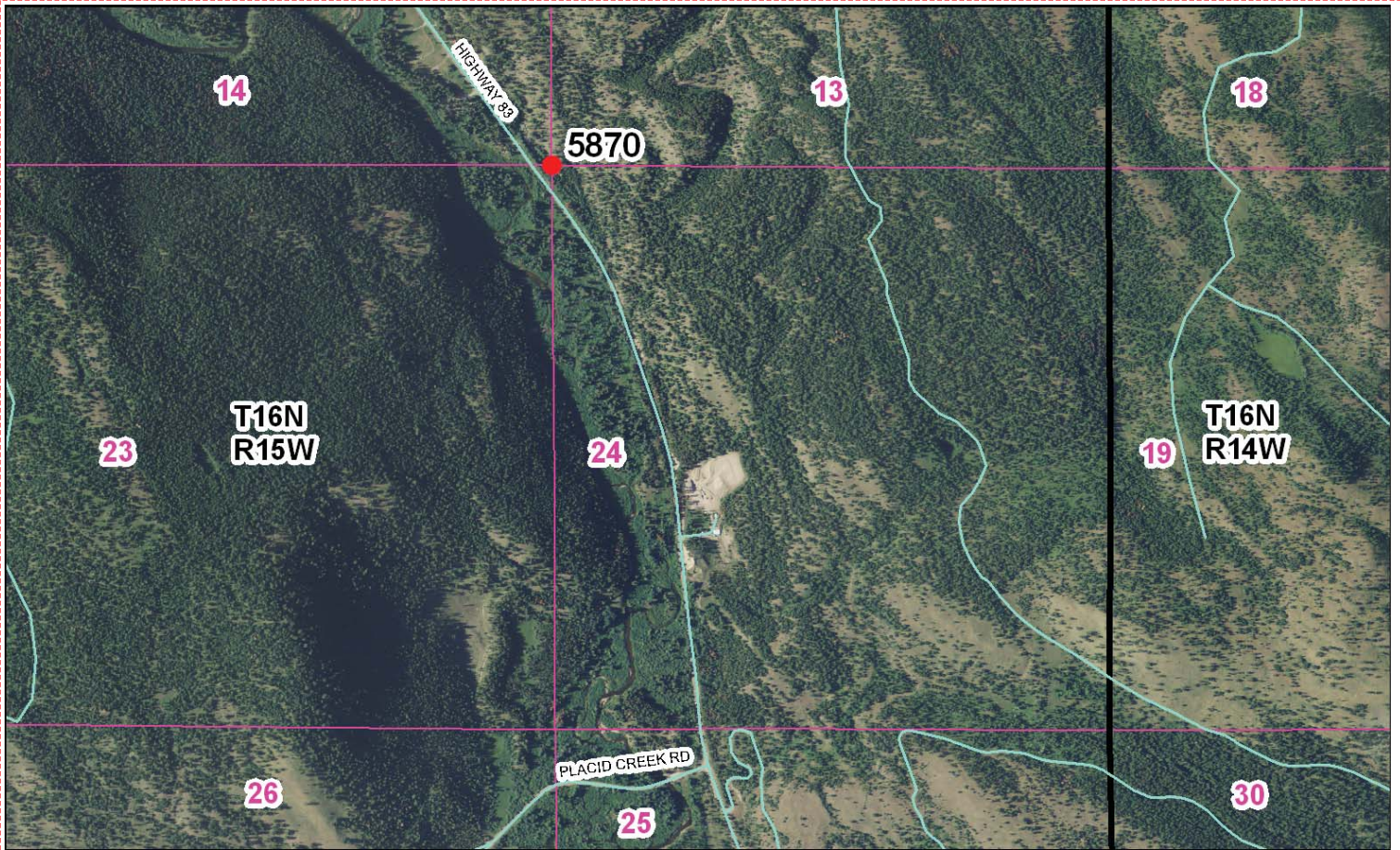


Photo Looking Northwest



Point # 5870

To Reach: 2wd access to within 300 feet of the monument.



Map of Area

307-0226

NOTICE:
 1. Use of a surveyor's record book is required for all surveys.
 2. Description of evidence found, not discrepancies in the record, is the method of establishing fact or delimiting boundaries.
 3. Description of monument and accessories set by the surveyor for the corner position.
 4. Sketches or corners, show all pertinent data which can be shown in a sketch, except corner marking.
 5. Certification must be signed and sealed by a Licensed Surveyor registered in the State of Montana.
 6. Full in Cross Section & Section Diagrams at bottom of sheet.

CERTIFIED CORNER RECORDATION

Corner: 1413 T. 16N R. 15W, P.M.M. Missoula County
23124

OLD RECORD - 1890: Set a sandstone, 18x12x8 ins., 12 ins. in ground for the cor. to secs. 13, 14, 23 & 24, marked with 3 notches on S. and 1 notch on E. edges, from which:
 * A pine, 16 ins. diam., bears N.62°00'E., 82 lks. (54.1 ft.)
 * A pine, 16 ins. diam., bears S.30°18'E., 20 lks. (13.2 ft.)
 * A pine, 19 ins. diam., bears S.25°20'W., 61 lks. (40.3 ft.)
 * A pine, 19 ins. diam., bears N.26°30'W., 37 lks. (24.4 ft.)

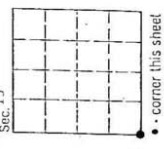
RECORD - MONTANA STATE HIGHWAY PLANS - Project S-61 (1) (date unknown): Found R/W monument and 2" iron pipe. Plans also called for R/W monuments being set as RMs to section corner, on the section lines to the North, East and West. Only one distance (to the West) was provided on the plans (see sketch).

FOUND - 1989: We find no evidence of the original stone nor the iron pipe noted on the Highway plans. We do find broken pieces of what appears to have been the R/W monument and the remains of several of the original BTs. We re-establish this corner position by distance/distance intersection from the remains of two of the BTs, which position also fits the broken pieces of an old R/W monument. At this position, we set a standard MOOH 3/4" aluminum cap on a 2 1/2" x 30" aluminum pipe, 24" in the ground and raise a mound of stone around it. (cap stamped as noted) From which:

- * The remains of a rotten stump (about 1/2 of what was a 17" tree) w/possible blaze and scribing visible, bears S.30°E., 13.2 feet.
 - * The remains of a very rotten stump and depression w/root crown, flat face w/possible blaze and scribing visible, bears N.20°W., 24.4 feet.
 - * The remains of a 7", badly charred stump w/possible blaze marks at base, bears S.27°W., 39.8 feet.
- We also establish the following new RMs:
- * A 24" pine w/blaze, scribed "89" and BT tag bears N.61°E., 46.2 feet.
 - * A 5" doug-fir w/blaze, scribed "89" and BT tag bears N.25°W., 15.4 feet.
 - * A 6" P-pine w/blaze, scribed "89" and BT tag bears S.27°W., 33.2 feet.
 - * A steel post w/MOOH decal bears North, 3.0 ft.



CONVEYANCE
 I, Duane Schmitz, certify the information shown herein is true and correct.
 Duane Schmitz
 Licensed Professional Engineer & Land Surveyor
 License No. 12/B9 Reg. No. 221529335
 Employer: PROFESSIONAL CONSULTANTS, INC.



Office of Clerk and Recorder, County of Missoula, This "corner record" was filed for record on February 12, 1990, in book No. 307-0226.
 was noted on the cross-index plat and is assigned page No. 110 in Missoula County Clerk's Office.
 Dec 12 1990
 Applied July 1, 1981, Montana Board of Professional Engineers & Land Surveyors
 T. 16N., R. 15W., P.M.M. corner this sheet
 307-0226

SEE REVERSE SIDE OF FORM FOR SKETCH OF CORNER AND TIES TO HIGHWAY R/W MARKERS.
 See Certificate of Survey No. 3752

Corner Recordation Form or Other Supporting Document

Point # 5870