

64238 CERTIFIED CORNER RECORDATION

Corner NWSECTION 32 T. 16N R. 18E P.M.M. FERGUS County

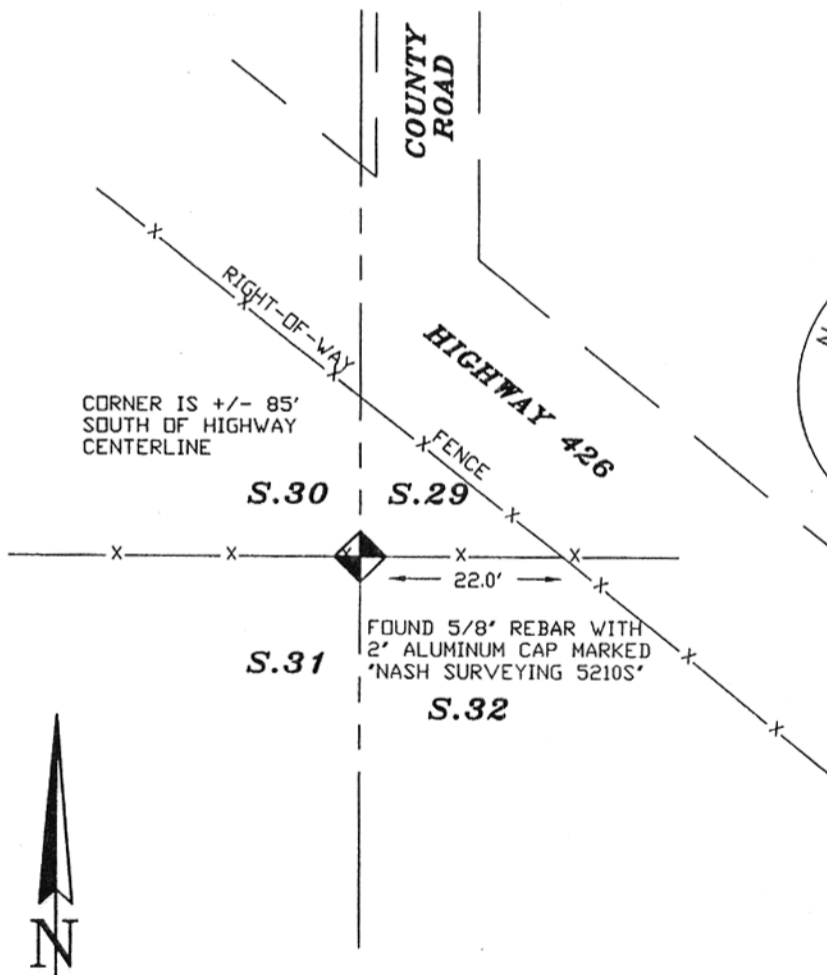
ORIGINAL RECORD: (Robinson, 1883) Set a sandstone 14 x 10 x 8 ins. 9 ins. in the ground for corner to Secs. 29, 30, 31, 32 marked 1 notch on S. and 5 on E. edges. Dug pits 18 x 18 x 12 ins. in each Sec. 5 1/2 ft. dist. and raised a mound of earth 2 ft. high 4 1/2 ft. base alongside

SUBSEQUENT RECORD: Found 5/8" rebar with 2" aluminum cap per C/S 536

EVIDENCE FOUND: Found 5/8" rebar with 2" aluminum cap marked "Nash Surveying 5210S" in East - West fence as shown below.

PERPETUATION: Accepted 5/8" rebar with 2" aluminum cap as true corner

SEE WEIDNER SUBDIVISION



064238 Fee \$.00
 FERGUS COUNTY
 Recorded 02/26/2002 At 10:45 AM
 Kathy Fleharty, Clerk and Recorder
 By Susan M. Werley Deputy



01-427

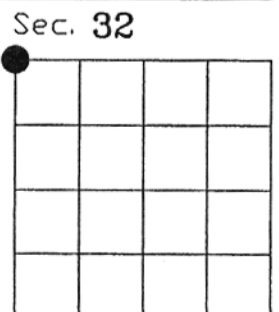
CERTIFICATION	
I, _____	certify the information shown herein is true and correct.
Signature Ground Party Chief _____	
I, <u>Scott C. Koterba</u>	certify that this Corner Record correctly represents work performed by me or under my direction in compliance with the 'Corner Recordation Act' (70-22-101, et seq., M.C.A.)
Signature of Surveyor & Seal <u>Scott C. Koterba</u>	
Date: <u>2/26/02</u>	Reg. No: <u>10801 LS</u>
Employer: <u>Milestone Surveying</u>	

SKETCH OF CORNER

Office of Clerk and Recorder, County of _____ This 'corner record' was filed for record on _____ was noted on the cross-index plat and is assigned page No. 140, in book No. 6

County Official _____

Cross Index No. V-5 T. 16N R. 18E P.M.M.



• corner this sheet