

088585

CERTIFIED CORNER RECORDATION

Corner N1/4 SECTION 13 T. 16N R. 18E P.M.M. FERGUS County

ORIGINAL RECORD: (Robinson, 1883) Set a sandstone 14 x 12 x 8 ins., 9 in. in the ground for 1/4 Sec. Cor marked 1/4 on N. face, dug pits 18, 18, 12 in. E & W of stone 5 1/2 ft. dist. and raised a mound of earth 1 1/2 ft. hgh 3 1/2 ft. base alongside.

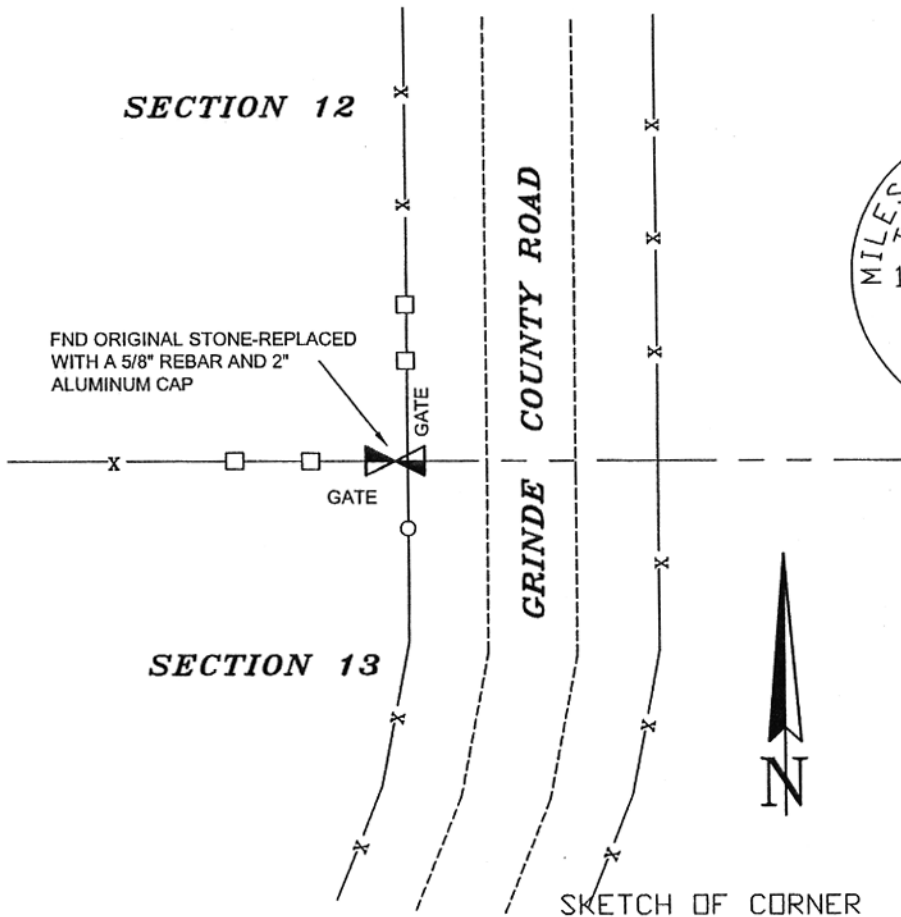
SUBSEQUENT RECORD: (GLO - Cumming and Fletcher, 1912) Fall 37 lks. S. of the 1/4 sec. cor. which is a sandstone, 12 x 8 ins. 5 ins. above ground, firmly set and marked and witnessed as described by the surveyor general.

(GLO - Cumming and Fletcher, 1912) From the old 1/4 sec. cor. bet. secs. 12 and 13, which has been replaced by a fence corner., I run East on a true line bet. secs. 12 and 13.

EVIDENCE FOUND: (April, 2007) Found the original stone (17" x 9" x 4") clearly marked with "1/4" on North face and firmly set at the West base of a county road R/W FCP (N-SxW).

PERPETUATION: (April, 2007) Replaced the found original stone with a 5/8" rebar and a 2" aluminum cap marked as shown. Set a MARLS tag on the West face of the FCP and laid the original stone alongside.

SEE CERTIFICATE OF SURVEY NO. 838



07-794

CERTIFICATION

I, _____ certify the information shown herein is true and correct.

Signature Ground Party Chief

Scott C. Koterba

I, _____ certify that this Corner Record correctly represents work performed by me or under my direction in compliance with the "Corner Recordation Act" (70-22-101, et seq., M.C.A.)

Scott C. Koterba
Signature of Surveyor & Seal

Date: 5/25/07 Reg. No. 10801 LS

Employer: Milestone Surveying

Office of Clerk and Recorder, County of

FERGUS

_____. This "corner

Sec. 13

rec **088585 Fee: \$ 0.00 Bk Pg**
FERGUS COUNTY Filed 05/25/2007 At 04:55 PM
w Kathy Fleharty, Clk & Rcdr By Kim Mansseau
Return to: FERGUS COUNTY 712 WEST MAIN
br LEWISTOWN, MT 59457

BOOK 7
PAGE 277, in

		●	

y Official

Cross Index No. J23 T. 16N R. 18E PMM

• corner this sheet

088585