

CERTIFIED LAND CORNER RECORDATION

231.036

Lake County

DESCRIPTION OF CORNER EVIDENCE FOUND, AND ORIGINAL RECORD (IF KNOWN)

FOUND: A mound of earth and stone at the apparent corner location. Failed to turn up the original stone. However this area was plowed and lay out in years past. I set a brass cap marked (S 18 and S 19 B.M. 1876)

ORIGINAL RECORD: 20.50 set a sandstone, 12 x 12 x 12 ins. in the ground, for S 18 corner marked 1, on N. side and raised a mound of stone, 2 ft. base 1 1/2 ft. high N. of corner.

DESCRIPTION OF MONUMENT AND ACCESSORIES ESTABLISHED TO PERPETUATE THE ORIGINAL LOCATION OF THIS CORNER:

Date of work: Dec. 1, 1976

SKETCH, WITH COURSE AND DISTANCE TO ADJACENT CORNERS IF DETERMINED IN THIS SURVEY. (MAY SKETCH OR PASTE REPRODUCTION ON REVERSE SIDE.)

OVER

Surveyor's Seal



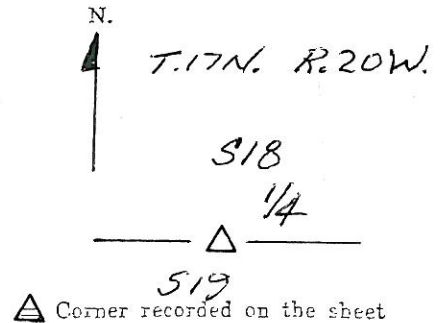
I, _____ certify that the information shown herein is true and correct.

Signature of Ground Party Chief

I, Christopher Balstad Jr. certify that I have carefully performed or reviewed the work done on the diagrammed corner as reported on this recordation form and approve the same.

Signature of Christopher Balstad Jr. Signature of Surveyor

DIAGRAM OF CORNER:



33225 Registration Number

Office of Clerk and Recorder, County of Lake, State of Montana at 8:48 o'clock A.M. This "corner record" was filed for record on the 7th day of DECEMBER 1976, was noted on the cross-index plat and is assigned page No. 231036, in book No. C-689. ETHEL M. HARDING CLERK County Official By M. Durand, Dep. Cross Index No. N-3 T. 17 N R. 20 W Mer.