

1. Original and/or subsequent record used to evaluate the corner position.
2. Description of evidence found to discrepancies in the record, state method of establishing lost or obliterated corners.
3. Description of monument and accessories set to perpetuate the corner position
4. Sketch of corner, show all pertinent data which can best be shown in a sketch example, corner marking, topography ties, position of accessories, etc
5. Certification must be signed and sealed by Land Surveyor registered in the State of Montana
6. Fill in Cross Index & Section Diagram at bottom of sheet

61- 401838

CERTIFIED CORNER RECORDATION

Corner: Section Corner 7, 8, 17, 18 T. 17N R. 20W P.M.M. Lake County

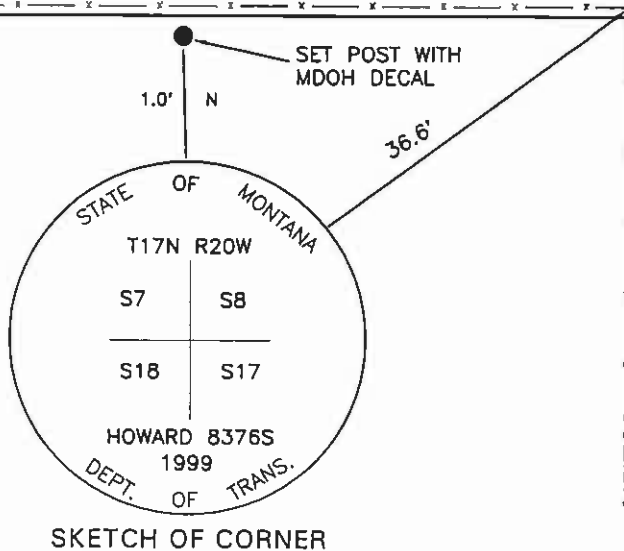
ORIGINAL RECORD: (1904 G.L.O.) Set a sandstone, 17x8x5 ins., 12 ins. in the ground marked with 4 notches on S. and 5 notches on E. edge; and raise a mound of stone, 2 ft. base, 1.5 ft. high, W. of corner.

SUBSEQUENT RECORD: See corner recordation #278623. Found 5/8" rebar and cap set in 1973.

EVIDENCE FOUND: Found 4x9x11 ins. above ground stone with 4 notches S & 1 visible notch on E; also found a 5/8" rebar that bears S78°E at 28.69' dist.

PERPETUATION: Set a 3 1/4" MDT aluminum cap on a 30" aluminum pipe in the position of the original stone. The cap is marked as shown in the sketch. From which;

- A fence post bears N78°E, 8.4' distant; with a MARLS tag.
- A fence post bears N75°W, 8.8' distant; with a MARLS tag.

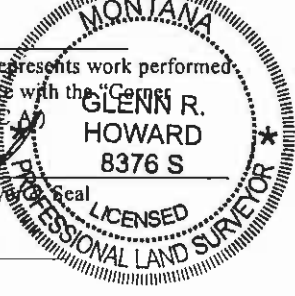


CERTIFICATION
I, Gerald McCarthy
certify the information shown herein is true and correct.

Gerald McCarthy
Signature Ground Party Chief

I, Glenn R. Howard
certify that this Corner Record correctly represents work performed by me or under my direction in compliance with the "Corner Recordation Act" (70-22-101, et seq., MCA)

Glenn R. Howard
Signature of Surveyor



Date: 8-9-99 Reg. No. 8376 S

Employer: DJ&A, P.C.

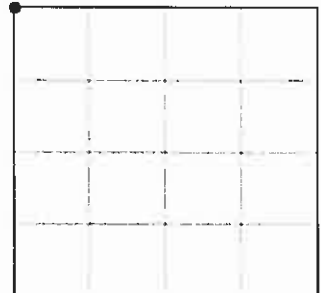
Office of Clerk and Recorder, County of Lake. This "corner record" was filed for record on AUG 11 1999 11:12 AM

was noted on the cross index plat and is assigned page No. 401838, in

book No. @-2264 RUTH E. HODGES *Ruth E. Hodges*
County Official

Cross Index No. J-5 T. 17N R. 20W PMM

Sec. 17



•- corner this sheet

NC