

INSTRUCTIONS

1. Original and/or subsequent used to evaluate the corner position
2. Description of evidence to locate the discrepancies in the record, state method of establishing corners
3. Description of monument and accessories set to perpetuate the corner position.
4. Sketch of corner, show all pertinent data which can best be shown in a sketch example, corner marking, topography ties, position of accessories, etc.
5. Certification must be signed and sealed by Land Surveyor registered in the State of Montana.
6. Fill in Cross Index & Section Diagram at bottom of sheet.

61- 401837

CERTIFIED CORNER RECORDATION

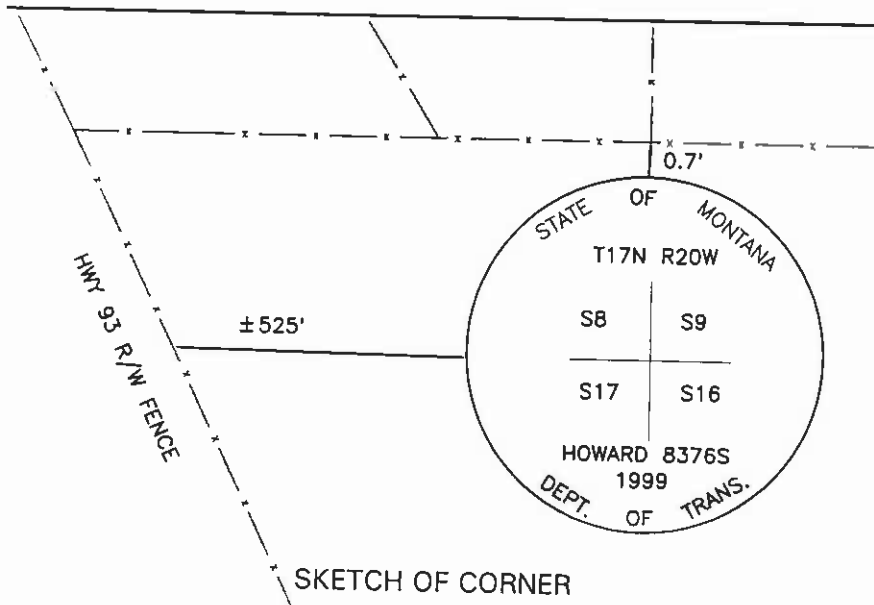
Corner: Section Corner 8, 9, 16, & 17 T. 17N R. 20W P.M.M. Lake County

ORIGINAL RECORD: (1904 G.L.O.) Set a sandstone, 16x7x5 ins., 11 ins. in the ground marked with 4 notches on S. and E. edges; and raise a mound of stone, 2 ft. base, 1.5 ft. high, W. of corner.

SUBSEQUENT RECORD: See corner recordation #222613. No Perpetuation done at this time.

EVIDENCE FOUND: Found 5"x6"x15" stone marked with "4 notches on NE corner".

PERPETUATION: Set a 3 1/4" MDT aluminum cap on a 30" aluminum pipe in the position of the stone, with the stone buried alongside. The cap is marked as shown in the sketch. From which;
 A fence post bears North, 8.9' distant; with a MARLS tag.
 A fence post bears East, 18.8' distant; with a MARLS tag.



CERTIFICATION

I, Gerald McCarthy
 certify the information shown herein is true and correct.
Gerald McCarthy
 Signature Ground Party Chief

I, Glenn R. Howard
 certify that this Corner Record correctly represents work performed by me or under my direction in compliance with the "Corner Recordation Act" (70-22-101, et seq., M.C.A.)
Glenn R. Howard
 Signature of Surveyor Seal

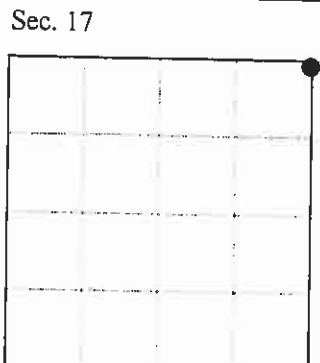
Date: 8-9-99 Reg. No. 8376 S

Employer: DJ&A, P.C.

A circular seal for a Professional Land Surveyor. The outer ring contains the text 'MONTANA' at the top and 'PROFESSIONAL LAND SURVEYOR' at the bottom. The center contains the name 'GLENN R. HOWARD' and the license number '8376 S'.

Office of Clerk and Recorder, County of Lake. This "corner record" was filed for record on AUG 11 1999 11:11 AM as noted on the cross index plat and is assigned page No. 401837, in Book No. C 2263 W.H. HODGES *Judy M. H. dep* County Official

Cross Index No. J-9 T. 17N R. 20W PMM



NC