

INSTRUCTIONS

1. Original and/or subsequent used to evaluate the corner position.
2. Description of evidence found to detect discrepancies in the record, state method of establishing lost or obliterated corners.
3. Description of monument and accessories set to perpetuate the corner position.
4. Sketch of corner, show all pertinent data which can best be shown in a sketch example, corner marking, topography ties, position of accessories, etc.
5. Certification must be signed and sealed by Land Surveyor registered in the State of Montana.
6. Fill in Cross Index & Section Diagram at bottom of sheet.

61-401831

CERTIFIED CORNER RECORDATION

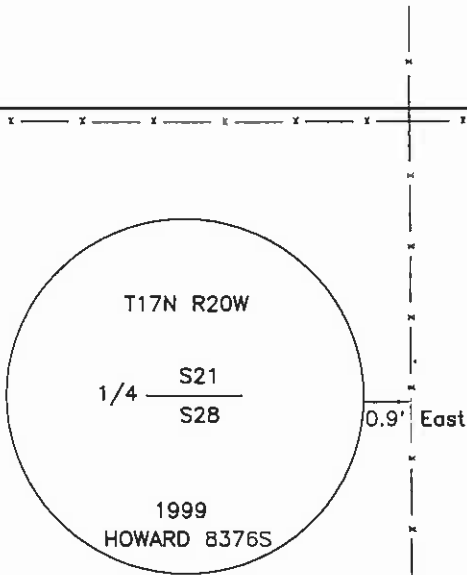
Corner: 1/4 Section Corner 21 & 28 T. 17N R. 20W P.M.M. Lake County

ORIGINAL RECORD: (1904 G.L.O.) Set a sandstone, 12x10x6 ins., 8 ins. in the ground marked 1/4 on N. face; and raise a mound of stone 2 ft. base, 1 1/2 ft. high, N. of corner.

SUBSEQUENT RECORD: None.

EVIDENCE FOUND: Found 14"x6"x5" stone, 11" in the ground with no markings.

PERPETUATION: Set a 5/8"x30" rebar with a 2" aluminum cap in the position of the stone, with the stone buried alongside. The cap is marked as shown in the sketch. From which;
A fence corner post bears N8°E, 24.2' distant; with a MARLS tag.



SKETCH OF CORNER

CERTIFICATION
I, Joseph Bauch
certify the information shown herein is true and correct.

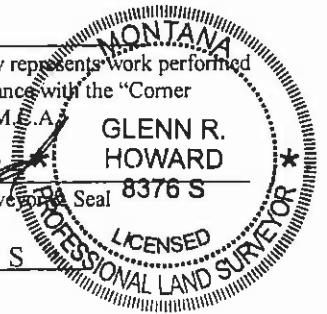
Joseph Bauch
Signature Ground Party Chief

I, Glenn R. Howard
certify that this Corner Record correctly represents work performed by me or under my direction in compliance with the "Corner Recordation Act" (70-22-101, et seq., M.C.A.)

Glenn R. Howard
Signature of Surveyor Seal

Date: 8-9-99 Reg. No. 8376 S

Employer: DJ&A, P.C.



Office of Clerk and Recorder, County of Lake. This "corner

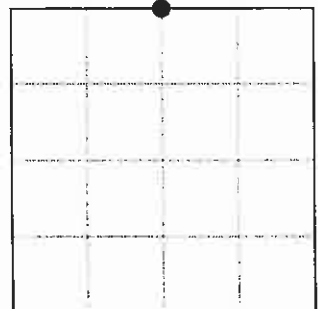
record" was filed for record on AUG 11 1999 11:03 AM

was noted on the cross index plat and is assigned page No. 401831, in

book No. C-2257 RUTH E. HODGES
County Official *Ruth E. Hodges*

Cross Index No. R-11 T. 17N R. 20W PMM

Sec. 28



•- corner this sheet

NC