

CERTIFIED LAND CORNER RECORDATION  
(REFERENCE FSM 7153.53)

DESCRIPTION OF CORNER EVIDENCE FOUND, AND ORIGINAL RECORD (IF KNOWN)

(Record) a fir post 4 ft. by 4 ins squar with mound of stone.  
(Found) a pile of stone and dirt almost buried under the edge of the road. A forest service poster on a R.R. fence post bears S 45°W 12.0'

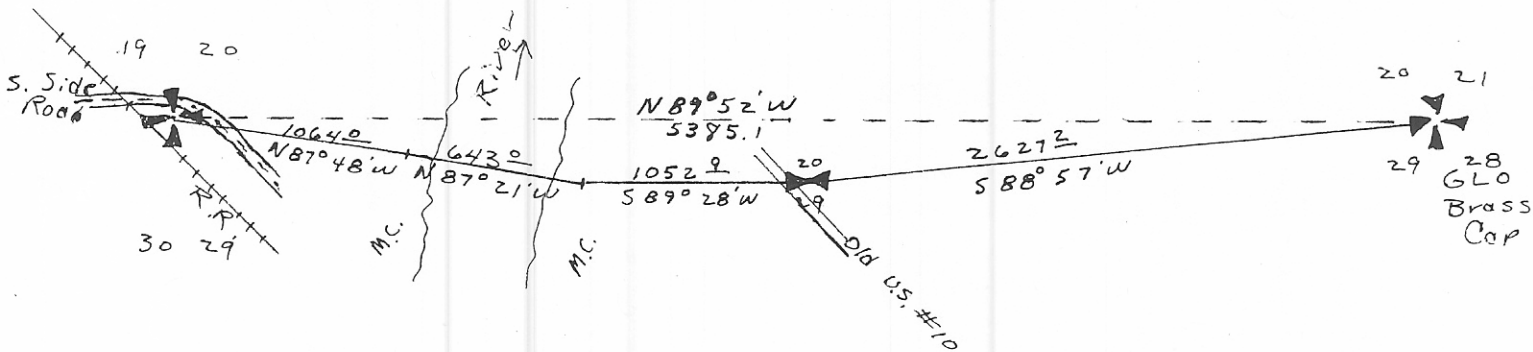
No trace of B.T.'s were found as they have long been gone.

DESCRIPTION OF MONUMENT AND ACCESSORIES ESTABLISHED TO PERPETUATE THE ORIGINAL LOCATION OF THIS CORNER:

Date of work: Sept. 30 1970

Set a brass cap attached to a 1 1/2" galv. pipe in the center of the mound of stone and placed additional rocks around.

SKETCH, WITH COURSE AND DISTANCE TO ADJACENT CORNERS IF DETERMINED IN THIS SURVEY. (MAY SKETCH OR PASTE REPRODUCTION ON REVERSE SIDE.)



Surveyor's Seal

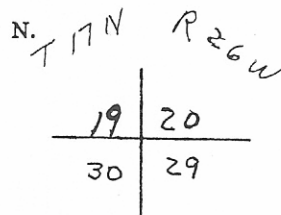
I, ..... certify that the information shown herein is true and correct.

Signature of Ground Party Chief

I, ..... certify that I have carefully performed or reviewed the work done on the diagrammed corner as reported on this recordation form and approve the same.

A. Lane Warren  
Signature of Surveyor

DIAGRAM OF CORNER:



= Corner recorded on the sheet

2734 S  
Registration Number

Office of Clerk and Recorder, County of Mineral

40012

This "corner record" was filed for record on the 1st day of March 1971, at 1:30 P.M., was noted on the cross-index plat and is assigned page No. ...., in book No. ....

Ruth E. Terley  
County Official

Cross Index No. R-5 T. 17 N. R. 26 W. Mer.

Fee \$1.50 paid