

INSTRUCTIONS

1. Original and/or subsequent record used to evaluate the corner position.
2. Description of evidence found, note discrepancies in the record, state method of establishing lost or obliterated corners.
3. Description of monument and accessories set to perpetuate the corner position.
4. Sketch of corner, show all pertinent data which can best be shown in a sketch example, corner marking, topography ties, position of accessories, etc.
5. Certification must be signed and sealed by Land Surveyor registered in the State of Montana.
6. Fill in Cross Index & Section Diagram at bottom of sheet.

089696

CERTIFIED CORNER RECORDATION

Corner 4 8 T. 17N. R. 26W. P.M.M. MINERAL County

RECORD: 1900. GLO Original Survey. Set a quartzite stone 16x7x6 ins. 11 ins. in the ground for 1-4 Sec. Cor., marked 1-4 on N. face; from which

A fir 9 ins. diam. bears S.60°E. 104 lks.(68.64 ft.) dist. marked 1-4S17BT.

No other tree within limits; raise a mound of stone 2 ft. base, 1 1/2 ft. high, N. of Cor. Pits impracticable. (NOTE: Resurvey of 1904 makes this common to sec. 17 only)

RECORD: 1904. GLO Resurvey Fractional Subdivisions T.17N., R.26W.

Set a slate stone, 15x9x5 ins., 10 ins. in the ground, for 1/4 sec. cor. sec. 8, marked 1/4 on N. face; from which

A pine, 24 ins. diam., bears N.89°W., 67 lks.(44.22 ft.) dist., marked 1/4 S8BT.

A pine, 24 ins. diam., bears N.74°45'W., 102 lks.(67.32 ft.) dist., marked 1/4 S8BT.

FOUND: 1997. A stone 4x8 ins., 3 ins. above the ground well set with "1/4" on the North face.

A 33 inch dia. p.pine bears N.89°W., 45.8 ft. scribing grown over.

A log with root hole bears N.74°W., 67.3 ft. scribing visible.

PERPETUATION: Replaced the stone with a std. USDA alum. pipe 2 1/4 ins. dia. by 30 ins. long with a 3 1/4 inch dia. alum. cap 8 ins. above the ground marked:

Buried the stone alongside the pipe.

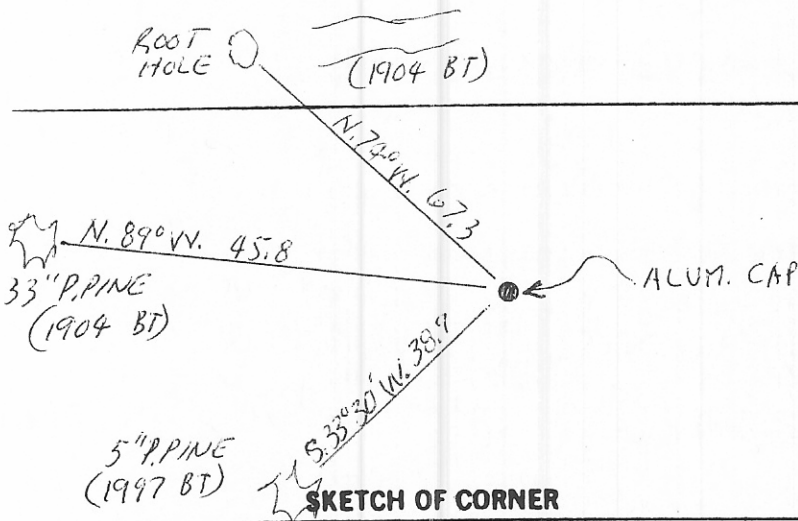
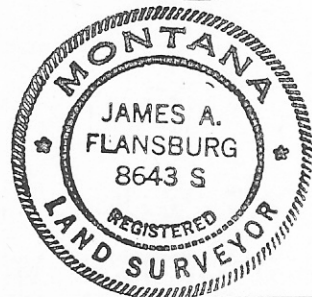
Made one new BT:

A 5 inch dia. p.pine bears S.33°30'W., 38.9 ft. scribed " XBT ". No trees within limits in Sec. 8.

Placed BT and LSM signs.

Painted the blazes red.

Decl. 18°E.



CERTIFICATION

I, EDDO M. FLURI
certify the information shown herein is true and correct.
Eddo M. Fluri
Signature Ground Party Chief

I, JAMES A. FLANSBURG
certify that this Corner Record correctly represents work performed by me or under my direction in compliance with the "Corner Recordation Act" (70-22-101, et seq., M.C.A.)
James A. Flansburg
Signature of Surveyor & Seal

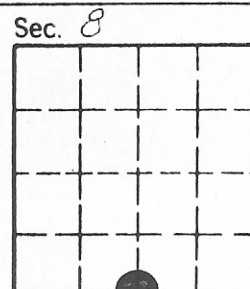
Date: 10-2-97 Reg. No. 8643S
Employer: U.S.F.S.

Office of Clerk and Recorder, County of MINERAL. This "corner record" was filed for record on FEBRUARY 1, 2001 @ 9:12 A.M. was noted on the cross-index plat and is assigned page No. _____, in book No. _____

Katherine Jasper by D Henderson
County Official

089696

Cross Index No. J-7 T. 17N. R. 26W. P.M.M.



• - corner this sheet