

INSTRUCTIONS

1. Original and/or subsequent record used to evaluate the corner position.
2. Description of evidence found, note discrepancies in the record, state method of establishing lost or obliterated corners.
3. Description of monument and accessories set to perpetuate the corner position.
4. Sketch of corner, show all pertinent data which can best be shown in a sketch example, corner marking, topography ties, position of accessories, etc.
5. Certification must be signed and sealed by Land Surveyor registered in the State of Montana.
6. Fill in Cross Index & Section Diagram at bottom of sheet.

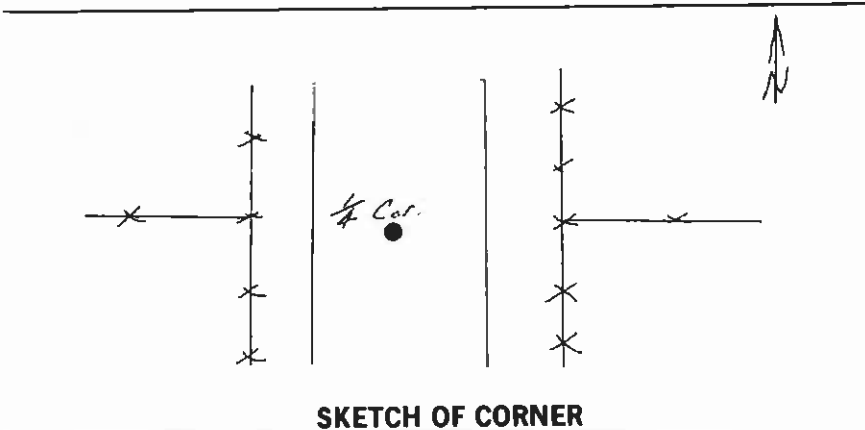
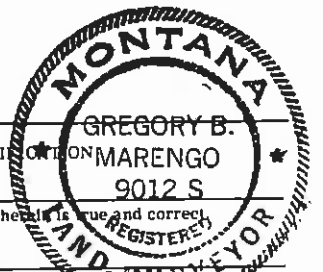
CERTIFIED CORNER RECORDATION

Corner 1/4 Cor., Sec. 17 E 16 T. 18 N. R. 19 W. P.M.M. LAKE County

RECORD: BRASS CAP AS SET BY SORENSON & COMPANY.

FOUND: THE BASE OF A BRASS CAPPED MONUMENT, AFTER RE-ESTABLISHING ITS POSITION I REFERENCED IT OFF BEFORE ROAD CONSTRUCTION COMMENCED.

SET: AFTER COMPLETION OF ROAD CONSTRUCTION I RESET, AT ITS CORNER POSITION, A 5/8" REBAR WITH CAP STAMPED "RLS 9012", 6" BELOW SURFACE OF ROADWAY AND WITHIN A MONUMENT CASING WITH A REMOVABLE CAP.



SKETCH OF CORNER

I, GREGORY B. MARENGO certify the information shown herein is true and correct.

Signature Ground Party GREGORY B. MARENGO

I, GREGORY B. MARENGO certify that this Corner Record correctly represents work performed by me or under my direction in compliance with the "Corner Recordation Act" (70-22-101, et seq., M.C.A.)

Signature of Surveyor & Seal GREGORY B. MARENGO

Date: 8/9/88 Reg. No. 9012

Employer: \_\_\_\_\_

Office of Clerk and Recorder, County of Lake. This "corner record" was filed for record on AUG 10 '88 at 4:32 pm was noted on the cross-index plat and is assigned Microfile 313643 in LORIN JACOBSON Clerk & Recorder by Carolee Miller, dep. County Official

File No. C-1598

N/C

