

INSTRUCTIONS

1. Original and/or subsequent record used to evaluate the corner position.
2. Description of evidence found, note discrepancies in the record, state method of establishing lost or obliterated corners.
3. Description of monument and accessories set to perpetuate the corner position.
4. Sketch of corner, show all pertinent data which can best be shown in a sketch example, corner marking, topography (ies, position of accessories, etc.
5. Certification must be signed and sealed by Land Surveyor registered in the State of Montana.
6. Fill in Cross Index & Section Diagram at bottom of sheet.

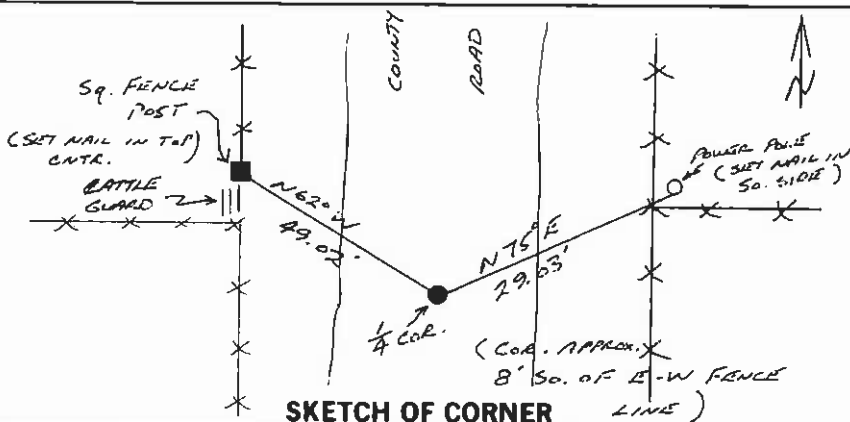
CERTIFIED CORNER RECORDATION

Corner 1/4 COR. COMMON TO T. 18N. R. 19W. P.M.M. LAKE County
SECTION 4 & 5

RECORD: CORNER POSITION FALLS WITHIN CONSTRUCTION LIMITS OF COUNTY ROAD.

FOUND: NO EVIDENCE OF ORIGINAL AND/OR SUBSEQUENT MONUMENTATION FOUND.

SET: A 5/8" DIA. REBAR WITH CAP STAMPED "MARENGO LS 9012" 0.3" BELOW SURFACE OF COUNTY ROAD. CORNER WAS ESTABLISHED BY SINGLE PROPORTION METHOD OF THE WEST LINE OF SECTION 4 BETWEEN NW AND SW SECTION CORNERS.



SKETCH OF CORNER

CERTIFICATION

I, EDWARD L. BROWN certify the information shown herein is true and correct

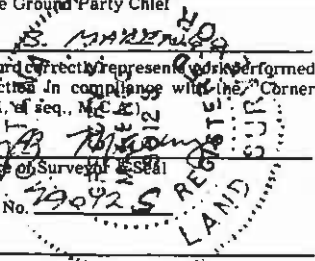
Edward L. Brown
Signature Ground Party Chief

I, GREGORY B. MARENGO certify that this Corner Record correctly represents work performed by me or under my direction in compliance with the "Corner Recordation Act" (70-22-101, et seq., M.C.A.)

Gregory B. Marengo
Signature of Surveyor & Seal

Date: 9/20/89 Reg. No. 79012 S

Employer: _____



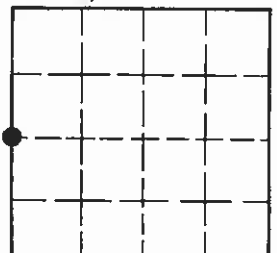
Office of Clerk and Recorder, County of LAKE. This "corner record" was filed for record on SEP 25 '89 at 9:48 A.M.

was noted on the cross-index plat and is assigned 320195, in

C-1680

Judy Ann Allen
County Official

Sec. 4



Cross Index No. C-9 T. 18N. R. 19W. P.M.M.

• - corner this sheet