

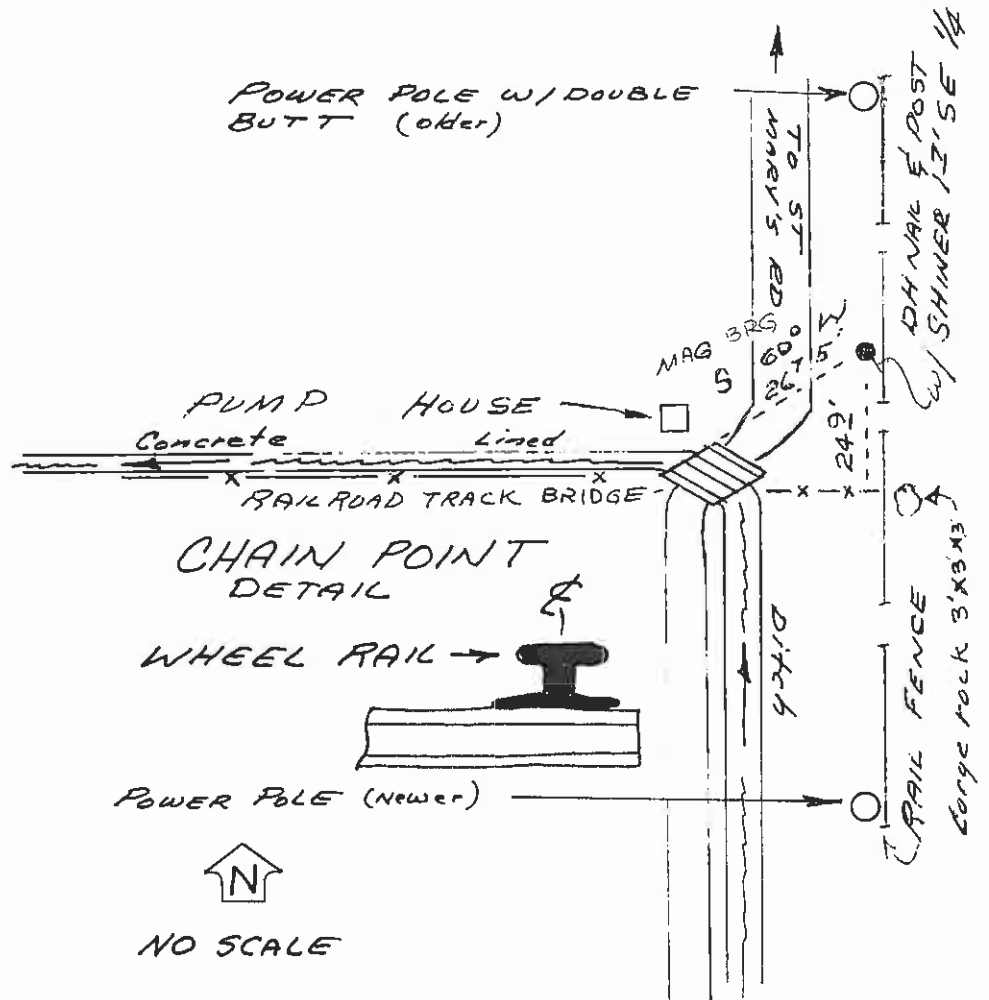
INSTRUCTIONS

1. Original and/or subsequent record used to evaluate the corner position
2. Description of evidence found, note discrepancies in the record, state method of establishing lost or obliterated corners.
3. Description of monument and accessories set to perpetuate the corner position
4. Sketch of corner, show all pertinent data which can best be shown in a sketch example, corner marking, topography ties, position of accessories, etc.
5. Certification must be signed and sealed by Registered Land Surveyor in State of Montana
6. Fill in Cross Index & Section Diagram at bottom of sheet

CERTIFIED CORNER RECORDATION

Corner 1/4 Sec's 33-34 T. 18N R. 19W P.M.M. LAKE County

ORIGINAL RECORD: SET A SANDSTONE 10X14X10 ins, 11 INCHES IN THE ROUND, FOR THE 1/4 CORNER MARKED 1/4 ON W. FACE AND RAISE A MOUND OF ONE 2 FT BASE 1/2 FT HIGH W. OF CORNER. FOUND: NO EVIDENCE OF ORIGINAL. FIND 5/8" REBAR FLUSH W/GRD BY OTHERS, PILED ROCK AROUND AND LAID OLD CLUTCH PRESSURE PLATE ON TOP OF CORNER.



CERTIFICATION

I, _____, certify the information shown herein is true and correct.

Signature, Ground Party Chief

CHRISTOPHER BALLET JR

I certify that this Corner Record correctly represents work performed by me or under my direction in accordance with the "Corner Recordation Act" (70-22-101, et seq. M.C.A.)

Signature of Surveyor & Sealer

Date 4/3/85 Reg. No. 332219

Employer: B.I.A. FLATHEAD AGCY PABLO MT

SKETCH OF CORNER

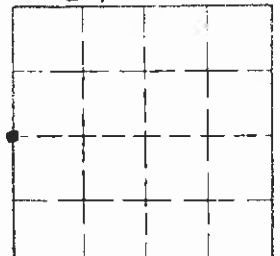
Office of Clerk and Recorder, County of Lake, State of Montana. This "corner record" was filed for record on the 26th day of April of 1985 at 2:26 P.M. was noted on the cross-index plat and is assigned Micro.No. 289388

File No. C-1432

n/c

Lorin Jacobson
County Official
By: Baranne Cooper, Deputy
Cross Index No. X-13 T. 18N R. 19W P.M.M.

Sec 34



• - corner this sheet