

INSTRUCTIONS

1. Original and/or subsequent record used to evaluate the corner position.
2. Description of evidence found, note discrepancies in the record, state method of establishing lost or obliterated corners.
3. Description of monument and accessories set to perpetuate the corner position.
4. Sketch of corner, show all pertinent data which can best be shown in a sketch example, corner marking, topography ties, position of accessories, etc.
5. Certification must be signed and sealed by Land Surveyor registered in the State of Montana.
6. Fill in Cross Index & Section Diagram at bottom of sheet.

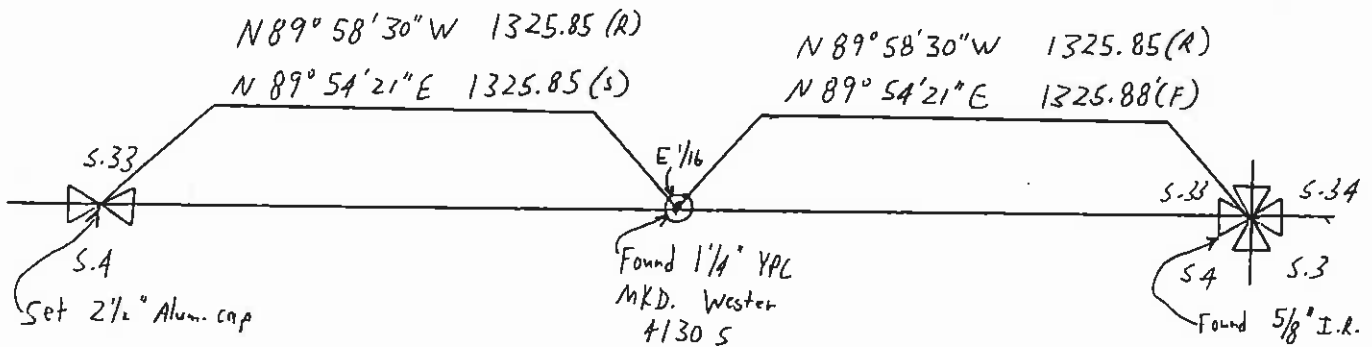
CERTIFIED CORNER RECORDATION

Corner: 1/4 Corner Sections 4 & 33 T. 18N R. 20W P.M.M. Lake County

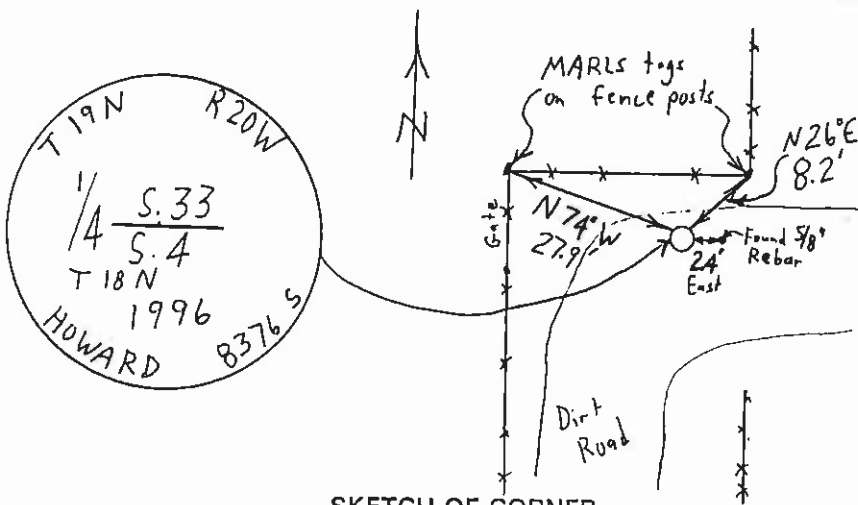
ORIGINAL RECORD (1904): Set a Sandstone, 15x7x6 ins, 10 ins. in the ground for 1/4 sec. corner, marked 1/4 on N. face.

EVIDENCE FOUND: Found original stone disturbed.

PERPETUATION: Replaced stone with a 2 1/2" aluminum cap, marked as shown in sketch, as per Certificate of Survey No. 4366. Placed MARLS tags on fence corner posts bearing N26°E, 8.2 feet, and bearing N74°W, 27.9 feet.



(R) Record. C.O.S. 4366



SKETCH OF CORNER

CERTIFICATION

I, Jerry McCarthy  
 certify the information shown herein is true and correct.  
*Jerry McCarthy*  
 Signature Ground Party Chief

I, Glenn R. Howard  
 certify that this Corner Record correctly represents work performed by me or under my direction in compliance with the "Corner Recordation Act" (70-22-10) of the State of Montana.  
*Glenn R. Howard*  
 Signature of Surveyor & Seal 8376 S

Date: 10-22-96 Reg. No. 8376

Employer: Druyvestein Johnson & Anderson

Office of Clerk and Recorder, County of Lake. This "corner record" was filed for record on OCT 23 1996 at 2:08 pm

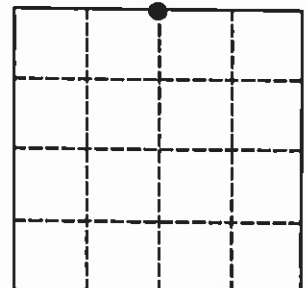
was noted on the cross index plat and is assigned page No. 377702, in

C-2084

RUTH E. HODGES By: Judy M. Jones  
 County Official dep.

Cross Index No. A-11 T. 18N R. 20W PMM  
Z-11 19N 20W

Sec.4



•- corner this sheet

*JRH*  
*Mc*