

CERTIFIED LAND CORNER RECORDATION

Lake County

DESCRIPTION OF CORNER EVIDENCE FOUND, AND ORIGINAL RECORD (IF KNOWN)

At the section corner for Sections 15, 16, 21, and 22, T. 18 N., R. 20 W., P.M.M., I find: A set stone in the ground, marked 18N on northeast and 20W on southeast face, with 3 notches on south and east edges. No timber.

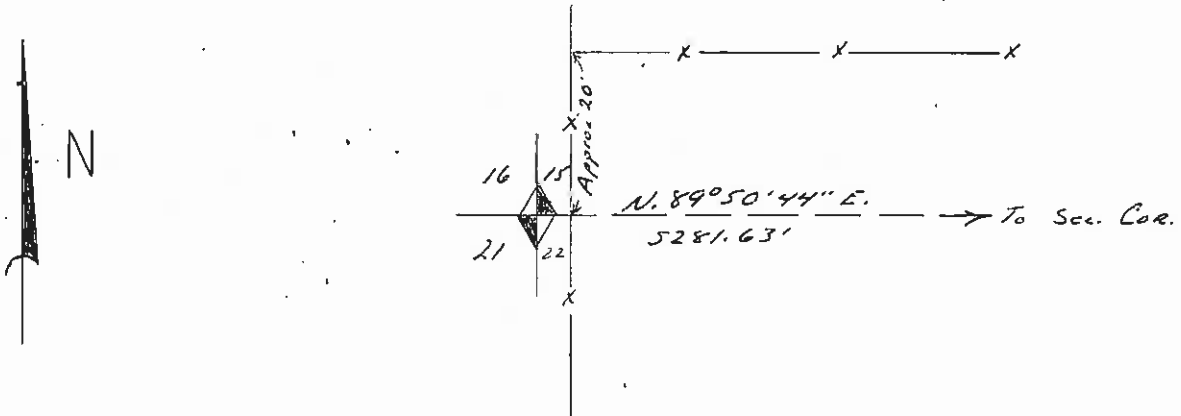
Record: A quartzite stone, 18" x 8" x 6", 12" in the ground, marked 18N on northeast and 20W on southeast face, with 3 notches on south and east edges. No timber.

DESCRIPTION OF MONUMENT AND ACCESSORIES ESTABLISHED TO PERPETUATE THE ORIGINAL LOCATION OF THIS CORNER:

Date of work: 5/10/72

Filed rocks around section corner stone and painted it red.

SKETCH, WITH COURSE AND DISTANCE TO ADJACENT CORNERS IF DETERMINED IN THIS SURVEY. (MAY SKETCH OR PASTE REPRODUCTION ON REVERSE SIDE.)



Surveyor's Seal

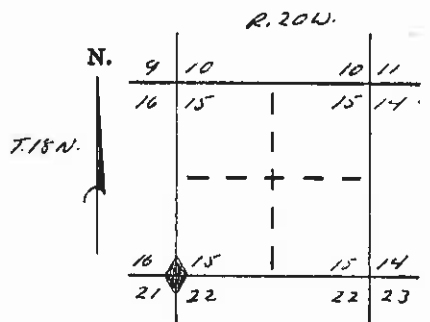
I, Michael L. Dugale certify that the information shown herein is true and correct.

Michael L. Dugale Signature of Ground Party Chief

I, Christopher Balstad Jr. certify that I have carefully performed or reviewed the work done on the diagrammed corner as reported on this recordation form and approve the same.

Christopher Balstad Jr. Signature of Surveyor

DIAGRAM OF CORNER:



◆ = Corner recorded on the sheet

33225 Registration Number

Office of Clerk and Recorder, County of Lake

This "corner record" was filed for record on the JUN 26 1972 day of 9:42 a.m. was noted on the cross-index plat and is assigned page No. C-251, in book No. James Bent CLERK & RECORDER County Official