

CERTIFIED LAND CORNER RECORDATION

208672

DESCRIPTION OF CORNER EVIDENCE FOUND, AND ORIGINAL RECORD (IF KNOWN)

Original record:

Set a wash boulder, 22X14X9 ins., 17 ins. in the ground, for 1/4 sec. cor., marked 1/4 on W. face; from which: A pine, 28 ins. dia., bears N.53°E., 260 lks. dist., marked 1/4 S 4 B T. A pine, 28 ins. dia., bears N.22°W., 311 lks. dist., marked 1/4 S 5 B T.

Found:

No evidence of corner. It has been destroyed by county road construction. I did find however, old stumps of the type and size called for by the original notes.

DESCRIPTION OF MONUMENT AND ACCESSORIES ESTABLISHED TO PERPETUATE THE ORIGINAL LOCATION OF THIS CORNER:

Date of work: 3-7-73

I set a 3/4" X 30" pin with a plastic cap in the ground for the 1/4 section corner. The corner position is on the Easterly edge of the county road. I set the corner by using the record distances from the found bearing tree stumps.

SKETCH, WITH COURSE AND DISTANCE TO ADJACENT CORNERS IF DETERMINED IN THIS SURVEY. (MAY SKETCH OR PASTE REPRODUCTION ON REVERSE SIDE.)

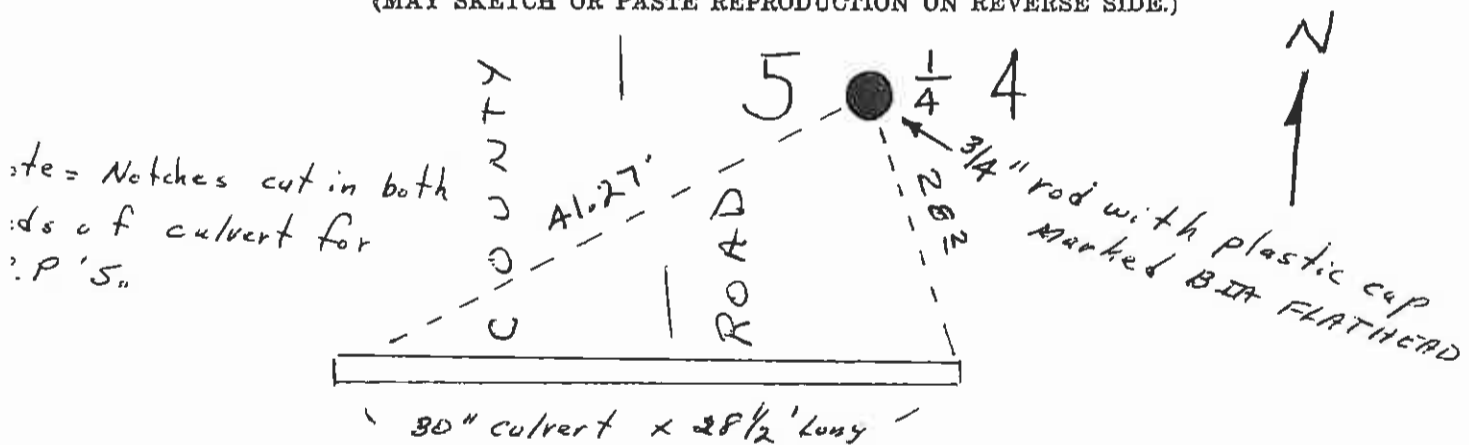
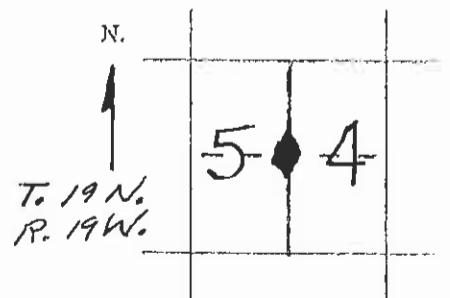


DIAGRAM OF CORNER:



Surveyor's Seal

I, _____ certify that the information shown herein is true and correct.

Signature of Ground Party Chief

I, Christopher Balstad Jr. certify that I have carefully performed or reviewed the work done on the diagrammed corner as reported on this recordation form and approve the same.

Signature of Surveyor

◆ = Corner recorded on the sheet

39225 Registration Number

Office of Clerk and Recorder, County of Lake
This "corner record" was filed for record on the MAR 28 1973 day of 19, was noted on the cross-index plat and is assigned page No. 10,354(71), in book No. C-350
ETHEL M. HARDING
County Official
Cross Index No. 0-9 T. 19 R. 19 Mer.